

Richmond Community News

• DECEMBER / JANUARY 2002 / 03 •

A very merry Christmas from all at Avebury House

Avebury House, 9 Eveleyn Couzins Ave has been operational since its re-opening by the Prime Minister in mid-September and offers the community an attractive low cost venue for community activities and functions. Run by the Avebury House Community Trust, there is a community development worker on site, and the house is open between 10am – 4pm, Monday to Friday.

For further information contact:

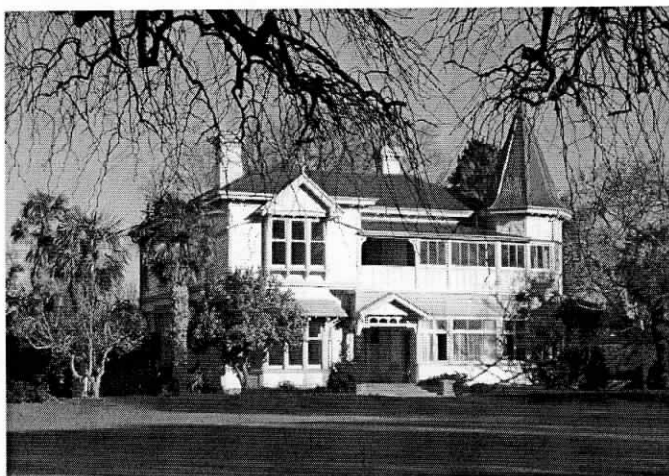
Lesley McMillan
Community
Development Worker
Avebury House
Ph 942-5615
or email
avebury@paradise.net.nz

Avebury House Trust will
work with local communities

to provide and foster an environment in which educational, social and cultural activities can flourish.

This is the mission statement of the Avebury House Community Trust, and one which shows how much we rely on the residents of the community! Your suggestions, your requests, your own abilities and skills are the basis on which Avebury House has begun, and will go forward to much more to come. Don't be shy about your suggestions – give that idea 'a try' Contact Lesley or any one of the Trust Board members. We look forward to hearing from you.

Beth Rouse, Chair
Avebury House
Community Trust



2002 has been an exciting, challenging journey of learning and discovery for the children, staff and community of Richmond School.

The staff and Board have worked through a Treaty of Waitangi workshop, NavCon2 ICT conference and Glasser training (on Choice Theory and Reality Therapy - relating to behaviours and choices we make). Staff have also spent a number of days training with Lane Clark, a leading "change agent and educator". This has been followed through in term four with the children and teachers working through an Inquiry into fairy tales/myths and legends from the cultures of our tamariki at Richmond Primary. This will be culminated with a Celebration of Learning performance in December.

Some key focus areas for the children in 2002 have been completing the "Keeping Ourselves Safe" programmes, in conjunction with our local police education officer. The

children have been following a new maths programme with which there has been improved numeracy skills throughout the school. The school continues to provide opportunity for all children to use ICT as an integral part of their learning.

Richmond School has benefited from some outstanding community support. Dave Diggs Motors has provided funding to run free soup and milo for all the children twice a week and Tom Kingi (Motown Hotel) and the Bengal Valley Foundation have enabled us to provide a healthy breakfast for children three mornings per week. They have also supported our unique leadership group. The leadership children are a selected group of year 6 children that fund-raise to support their personally planned "adventure" in November each year. They have also been busy washing cars and selling chocolates to help fund their exciting trip to

continued overleaf

Richmond School continued

Auckland. A huge thank you to Dave Diggs, Tom Kingi and The Bengal Valley Foundation for their investment in our children's learning.

Our new school group Te Roopu Awhina has been working really hard this year and have established our Kaumatua Council led by Auntie Jane Phillips. This year the Kapahaka children and Te Roopu Awhina have organised a school hangi, Kaumatua open day, Friday whanau days, Holy Trinity Church performance and fund-raising. The children have performed for the University of Canterbury and opened the powhiri for the New Zealand Swim Coaches and Teachers'

Conference. They were also been invited to attend and perform at the opening of Avebury house with the Prime Minister Helen Clark in attendance.

We are thrilled that our school roll has grown and we feel this reflects the exciting new and innovative teaching practices we are currently offering.

We welcome any new pupils to our diverse, challenging and learning environments. Enrolments are being taken until Friday 20th December and from Monday 27th January 2003.

"Ko nga Tamariki - ko nga taonga" "The children are our treasures"

crossword

ACROSS

1. High notes
5. Capture
9. _____ Jima
12. "_____ Marlene"
13. Hot spot
14. Awe
15. Penn or Connery
16. Domed temple at Rome
18. Riddle
20. Oolong or pekoe
21. Take it easy
23. Like some complexions
27. Nymph chaser
30. Nu follower
32. Knowledge
33. Christian or Roman
34. Word with "frutti"
37. Card game
38. Pay to play
40. River of Italy
41. Grades
43. Takes ten
45. Lecher's look
47. Wallet bill
49. Scant
53. Docile
57. Senator Bob
58. Partner of order
59. One of the Ages
60. Assam silkworm
61. Hurricane centre
62. Stow cargo
63. Consider

DOWN

1. If not
2. Mortgage
3. Jai _____
4. One by one
5. Gemstone
6. Ms. Gardner
7. Lois's Clark
8. Stage direction
9. Bar need
10. Court
11. Possess
17. Tow
19. Fair
22. Praise
24. Venetian VIP of yore
25. Plumbing flaw
26. Kyoto cash
27. Char
28. "Hail Britannia" composer
29. Makes lace
31. Call _____ a day
35. Out of bed
36. Two words of understanding
39. Bond's school
42. Swapped
44. Escargot
46. Correct
48. River of Spain
50. Pierce
51. Nobelist Wiesel
52. Clean the pipe
53. Pub order
54. Spring month
55. Farm animal
56. Mauna _____

Solution next month

1	2	3	4		5	6	7	8		9	10	11
12					13					14		
15					16				17			
18				19			20					
			21			22		23		24	25	26
27	28	29				30	31		32			
33				34	35			36		37		
38			39		40			41	42			
43				44		45	46					
			47		48		49			50	51	52
53	54	55				56			57			
58				59					60			
61				62					63			

Hollywood Flare

RE-SOLD CLOTHING

**Present this Coupon
for 10% Discount**

**SUPPORTING THE
RICHMOND COMMUNITY**

**330a
Stanmore Rd
Ph. 389-6726**



Massage

Relieve Stress

Improve Circulation

Tone Muscles

with a therapeutic
aromatherapy massage by
Christine at her home in
Dallington \$50 per hour.

Ph. Christine 381 0615

RICHMOND WORKING MEN'S CLUB & M.S.A.

P.O. Box
26-036
Christchurch



Phone
389-5778

**WE ARE PROUD
TO SUPPORT OUR
COMMUNITY**

Representing Resourceful & Refreshing Richmond – the job of your local Member of Parliament

I am delighted to be writing this first column for Richmond residents. I have now been your Member of Parliament for six years and am selfish enough to love every moment. I want to give you an overview of some of my local involvement.

I'm not surprised that this newsletter is being produced from **Avebury House**. The fabulous restoration of this stunning building ensures that future generations will enjoy a preserved slice of architectural history full of community activity. Prime Minister Helen Clark, who opened the building recently, was very impressed that local people had driven the project. *Not suprising!* was my response. *This is Richmond after all!*

One local project that our office has a strong and positive relationship with is the **Delta Trust**. They show

what help at the grassroots really means. Through such varied services as their food bank and their wonderful "Live to the Max" courses, they are helping people, particularly women, make the transition from enduring to surviving to enjoying life.

Since 1985, I have been closely involved with local community groups and the Department of Corrections officials over the controversial proposed **Periodic Detention Centre** in Stanmore Road. The whole story is a scandal, and the only credit is to local people who have fought, and paid, to prevent Council and Government trampling over their rights. A solution seemed in sight pre-election; now I am not so sure. **Richmond Neighbourhood Cottage** is leading the fight. Watch this space...

Richmond is blessed

with a great local school, **Richmond Primary**, which was named Primary School of the Year only three years ago. I have a close link with the **OSCAR** (after school care) club running from the school, even having written their constitution when working at the Community Law Centre.

Issues which we debate in Wellington impact on the ground in communities like Richmond. An example is the number of poker

machines allowed, who gives out the money they generate and who pays for the addiction they cause. A Select Committee report on the Responsible Gaming Bill is available on the internet www.knowledge-basket.co.nz

I aim to represent you with style and dedication. And I improve through feedback. I am looking forward to writing the next article already!

– TIM BARNETT, M.P.

COMMUNITY NOTICES

Christmas Carols on the Green
Sunday 22 December 3 p.m.

- Community singing of Christmas Carols
- Handbell players
- Donkey rides and Bouncy Castle for the children

Come along for this community occasion.

A joint activity of the Richmond Neighbourhood Cottage and the combined churches of the area.

Richmond Community Association

Did you know that Richmond has a community association of its own? Well we do, and its name is the Richmond Neighbourhood Cottage Inc. The Committee meets 3rd Tuesday of each month, 7.30 p.m. at the Richmond Neighbourhood Cottage on the Richmond Green opposite the Richmond Workingmens Club. The Committee deals with a wide variety of community issues including roading, city plan, resource consent etc.

We are an official community association recognised by the City Council. Remember that it was our Committee that made it possible for our community to have our modern New World Supermarket. All resident are welcome at our monthly meetings.

DID YOU KNOW?

Did you know that North Avon Road was called Mud Lane? Or that Stanmore Road was the first stage coach route to Burwood and New Brighton?

These and other fascinating snippets of local history have come to light in G. Walsh's book *Richmond: A Regional History*.

During Heritage week and after, it became clear that many people are interested in the history of this area.

We plan to publish a monthly column about the history of Richmond. If you have any stories or information we would like to hear from you. Contact Jan at Avebury House, phone 942-5615.

GENERAL

BUILDING & property maintenance available, Xmas period. Free quotes. Ph. 365-6400.

FREE work experience available in building and forestry. For details phone 365-6400.

FIREWOOD. Buy 10 bags, get 1 free. Free delivery Christchurch area. Phone 365-6400.

SUN NING TAKEAWAYS

273 Stanmore Road, Telephone 389-3113

CHINESE MEALS ~ FISH & CHIPS ~ HAMBURGERS

HOURS

Tues–Wed: 11.30am – 2pm/4.30pm – 8.30pm

Thurs–Sat: 11.30am – 2pm/4.30pm – 10.00pm

Sun: 4.30pm – 8.30pm **Mon:** Closed

PHONE ORDERS TAKEN ~ SMALL FUNCTIONS CATERED FOR

SUPPORT YOUR LOCAL RICHMOND BUSINESSES

Delta Community Support Trust

Delta Trust, which began in 1995, was set up by the North Avon Baptist Church under its visionary pastor, Graham Reddell, who fostered a desire to be involved in the community.

Over the last seven years, the Trust has endeavoured to empower people in Richmond and its surrounding area to live their lives to their potential by assisting them to establish positive relationships and in attaining personal growth.

Initially our services consisted of a foodbank and budget advice. Over the years we have added;

advocacy, casework, a weekly community meal, a weekly community fellowship and Kids Club (7-10 year olds), Delta Friendship Link, counselling and an empowerment course called 'Live to the Max!'

Delta Friendship Link aims at opening the door to integration into everyday life for those within our community isolated by intellectual disability. To facilitate this, friendships are developed both within groups and individually, including pet friends.

We have a trained counsellor who is available to everyone, regardless of

paying ability.

'Live to the Max', our latest empowerment course, is an individualised, free goal-setting course held over four months in a group setting. Participants are helped to set goals and achieve them. We are very excited to be able to offer this course which has received very positive feedback from participants, such as: "I don't get as angry as I used to. I don't feel as inferior". "Now I do feel more sure of myself". "I've saved money for a holiday".

The eight staff and volunteers at Delta are very committed to fostering a

strong healing community in a society in which many people live lonely and isolated lives. We work hard at providing a place of welcome, compassion, forgiveness, celebration

News and views and items of interest are needed from you, the people of Richmond Community for inclusion in the monthly newspaper. We need your input to offer a balanced content. All contributions are treated equally and with respect. Any opinion is that of the writer only. Submissions to be sent to avebury@paradise.net.nz or to Richmond Community News, PO Box 26-097, North Avon.

The Richmond Community News is published monthly by Avebury House Community Trust, 9 Eveleyn Couzins Ave, Richmond, Christchurch. Ph 942-5615 or email avebury@paradise.net.nz.

AVEBURY HOUSE ACTORS' STUDIO

STAGECRAFT CHARACTERISATION RELAXATION VOICEWORK

Beginning 11 February 2003, Avebury House will be offering a series of studio classes in acting for the theatre. The Studio will teach techniques for a variety of performance styles. Shakespeare, Goldsmith, Wycherly, Sheridan, Ibsen, Chekhov, Behan, Beckett, Pinter, Mamet among others will be covered. All abilities are welcome.

These are non-performance classes directed by Christchurch actor Nic Farra. A graduate of the New Zealand Drama School with a 20 year career in theatre, television and film, Nic will lead the Studio in practical ways of using text to create a range of different characters.

TUESDAY NIGHTS • 7.30-9.30 • COST \$3.50