

Richmond Community News

• JUNE 2003 •

Diverse Café opens for local youth

The first project of the Youth Initiatives Trust – Ka Whakaaro o ka Rakatahi has now come to fruition with the opening of Diverse Café – a café by youth, for youth. The café is located at 5 Buckleys Road (opposite Eastgate Mall, behind the KBs Bakery).

The café has a wide range of food and drinks available at discount prices for youth under 25 years old. Currently staff are working with young people from the area on a range of youth focused events to be held at the café. Like that café's name, the events will be as diverse as possible.

To ensure the café is by youth, for youth the Trust hopes that local youth will be innovative and energetic participants. If there something you like about the café let us know so it will continue. If there something you would like to see happen at the café let us know so we can try and make it happen. If there are any young people who would you like to be on the café committee or be trained as a volunteer to work at the café then they are welcome to contact the Café Manager, Matt Walters.

In 2000 the Hagley/Ferrymead Advocacy Team of the Christchurch City Council consulted with the community to identify issues affecting the community. The community

identified "youth issues" as a key element but the process excluded youth.

Through the Linwood Forum members of the community met and developed a job description for "Youth Initiatives Facilitators" to consult with youth in Phillipstown, Bromley, Woolston and Linwood. The community acknowledged that when addressing "youth issues" it was important to ask youth to identify what they felt was important and what should happen. After extensive consultation the Youth Initiative Facilitators released a report "Proposals from Young People". A strong message from the report was that local youth wanted a café which was high quality but cheap, easily accessible, safe and welcoming to youth by incorporating youth culture. From there the Youth Initiatives Trust – Ka Whakaaro o ka Rakatahi was established with its first task to establish the youth café.

While the Trust is responsible for the financial, legal and administrative aspects of the café it is youth who will make decisions about the café. A café committee of young people from the area was established and the committee worked with the Youth Initiative Facilitators to seek support from local businesses through donations. The committee also

ran a competition among local youth to name the café. The café committee was responsible for choosing the décor and will continue to make decisions about the functions of the

café from the art work to the food, to the music and social events under the guidance of the café manager and the Trust.

All local youth are welcome to participate.

Did you know?



Update on last month's photo of Wheatley's Auto Centre. It became Shell Hills Road, is now Challenge Hills Road and has changed its appearance (see photo).

The MOVIE MAN

VIDEO SHOP

\$6
NEW
RELEASES

OPEN
7 DAYS

VIDEOS
DVDS
GAMES

2 FOR 1 TUESDAYS

PROVEN COMPUTER SOLUTIONS

Free Computer Advice
Qualified Technical Support
25yrs Experience
Friendly Personal Service

For all your PC and internet needs

PC Plus ph: **389 0911**

330c Stanmore Road, Richmond Village

Email sales@pcplus.co.nz - www.pcplus.co.nz

Did you know?

Richmond once had it's own jam and cordial factory from 1898 till 1930.

William Barcock came from Bedford in England, firstly to Rakaia then to Christchurch where in 1898 he established the Bedford Preserving Works in London St. where John Rhind is now.

Barcock produced a wide range of pickles, sauces, vinegars, fruit lines and jams. The jams were sold in half gallon earthenware & stone crocks with Barcocks name and address printed on them.

Three types of herbal beer were produced -hop, herb and ginger, which he sold in specially made heavy dark green glass bottles, embossed 'Barcocks Jubilee Beer'. These

had stoppers of hard rubber which were threaded and screwed into the bottle. They became obsolete when crown tops took over in the 1920s and most would end up in the rubbish. In pre-council rubbish bag days, most house-hold rubbish was buried in the garden. Who knows what bits of Richmond history may be at the foot of your garden!

The factory had a large steam engine and boiler. The steam vats were used for boiling the beverages and the steam jacket and pans for jams. Goods were dispatched direct to the public. The firm closed about 1930.

Alan Williamson

crossword

ACROSS

1. Zodiac sign
5. Ventured
10. Official records
14. Verdi opera
15. Gladden
16. sightseeing trip
17. Sudden; unplanned (4 wds.)
20. Lamprey or moray
21. Small inlets
22. Wears away
23. Less exciting
25. Close comrades
26. Cooked slowly
28. Humdrum routine
32. Electrician
33. Rouse
34. Fish eggs
35. Turkish officials
36. Paired up
37. Prima donna
38. Encountered
39. Lures; tempts
40. Pilot's 'O.K.'
41. Safeguard
43. Raises trivial objections
44. Chantilly product
45. Grow near the hour
46. Ornamental piece of jewellery
49. Unit of inheritance
50. Electrical unit
53. Patriotic colours (4 wds.)
56. False god
57. Gumption
58. Spanish stewpot
59. Like some murder mysteries
60. Chess and checkers
61. Nautical assents

DOWN

1. Medical patient
2. Mellow
3. Cheapen; corrupt; make impure
4. Cocktail lounge
5. Challenged boldly
6. Church section
7. Stadium cheers
8. Summer (Fr.)
9. Debased
10. Maximally (2 wds.)
11. Female collegiate
12. Melody
13. Field of study
18. Abalone
19. Synthetic fabric trademark
24. Strikes with wonder
25. Nudges
26. Marsh or bog
27. Ferocious feline
28. Dull finish
29. In the first place
30. Fictional work
31. Time periods
33. Surrender rights
36. Parading
37. Bird of peace
39. Seashore feature
40. Assessed
42. In no hurry
43. French Riviera town
45. Depart
46. Ship's prison
47. Make over
48. Fragrance
49. Microbe
51. Stubborn animal
52. Vegetable (pl.)
54. Bohea or oolong
55. Feather scarf

last month's solution

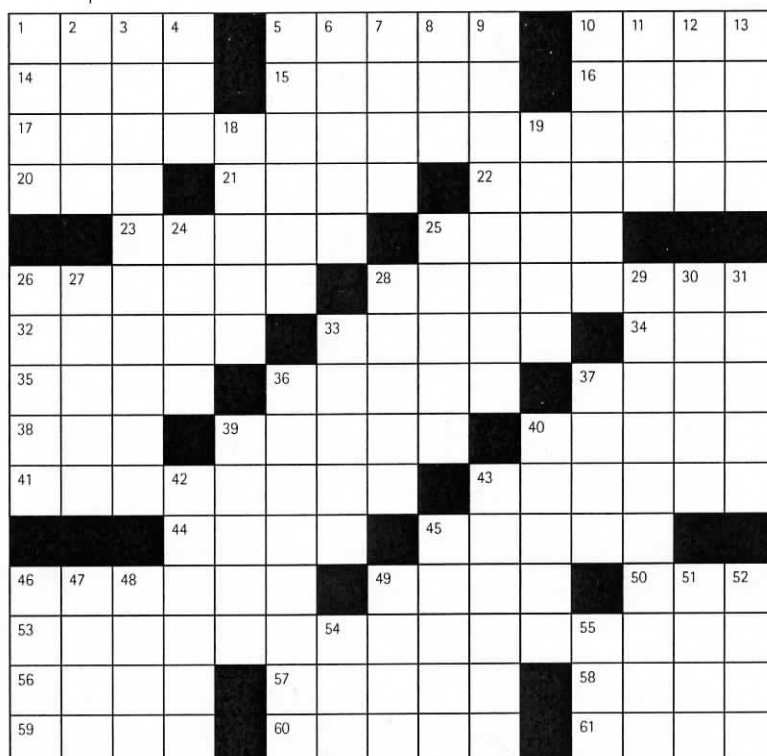
ACROSS

1. Galas
6. Sops
10. Spot
14. Agent
15. Epee
16. Wire
17. Buttercups
19. Ante
20. Set
21. Wits
22. Tanks
24. Fans
25. Mink
26. Shark
28. Sane
29. Twa
32. Staid
33. Straw
34. Roi
35. Toll
36. Shins
37. Barn
38. Art
39. Anile
40. Wrist
41. Yes
42. Mope
43. Grant
44. Laws

DOWN

1. Gabs
2. Agree
3. Lett
4. Ant
5. Steward
6. Sects
7. Opus
8. Pep
9. Sestinas
10. Swank
11. Pink
12. Orts
13. Tee
18. Rink
23. Anew
24. Fail
25. Marne
26. Store
27. Halts
28. Stile
29. Train
30. Worst
31. Aint
32. Stay
33. Ships
36. Snowplow
37. Bray
39. Amas
40. Wrangle
43. Grin
44. Latin
45. Print
46. Glad
47. Ride
48. Even
49. Pupa
50. Opees
51. Esse
52. Ace
54. Ova
55. Cor

The solution to this month's crossword will appear in next month's newsletter



A well-known Richmond businessman

In the 1930's, Eric McPherson opened a butcher shop at 321 Stanmore Road (the brick building on the corner of Stanmore Road and Avalon Street). On the corner was the butcher shop, a Post Office and a grocery store. The family had living rooms behind the shop and three bedrooms upstairs. Smallgoods were made out the back and Eric delivered meat on a special bike with a large basket on the front, while his wife looked after the shop.

In the early 1940's, McPherson's Butchery moved to 75 North Avon Road. Over the next 30

years the house and shop were extensively renovated and is now the 'Tall Poppies' property. North of Avalon Street was Burns shoe shop, Dave Harries blacksmith, Annie Hines chemist, Moore's dairy, a barber and tobacconist, Wonnacott's fruit shop, Partridges grocery shop and Murnane's fish and chip shop.

Another building on the corner of Stanmore and North Avon Roads, housed Mrs Burberry's draper shop and Tuck's grocery store. Across Stanmore Road was a cake kitchen and Stubberfield's jewellery and

watch repair shop.

Eric McPherson was President of the Richmond Working Men's Club for several terms over the years and had a green at the Christchurch-

Richmond Bowling Club in Petrie Street named after him.

The photograph is of 75 North Avon Road in the 1940's supplied by the McPherson Family.



Community notices

Floral Day at Avebury Raffle Winners

1st Prize - Jerry.
Tel. 021 2163438
2nd Prize - Bosch.
Tel. 352 2997
3rd Prize - J. Parker.
Tel. 386 2427

Know Your Rights Courses

If you've ever wanted to know your rights as a tenant, landlord or consumer then we've got just the thing for you. Te Whare Roimata in conjunction with the Linwood Resource Centre is offering two courses this June, which will let you know your rights.

Consumer Rights Course:

June 18

Tenancy Rights Course: June 25

Both courses are free and run from 9.30am-12 noon at TeWhare Roimata, 274 Gloucester St. Inquiries to Jenny on 379-5134.

Avonside Ladies Probus Club

Meets at 10a.m. the first Tuesday of each month upstairs at the Richmond Club. We have had our A.G.M. and are now looking for new members.

For information
Ph. Helen 382-6611
or Heather 942-1583

Richmond Community Association

Its name is the Richmond Neighbourhood Cottage Inc. The committee meets 3rd Tuesday of each month, 7.30pm at the Richmond Cottage on the Richmond Green opposite the Richmond Workingmens Club. The committee deals with a wide variety of community issues and all residents are welcome at our monthly meetings.

Harcourts

GRENADIER REAL ESTATE LTD. A MEMBER OF THE HARCOURTS GROUP



Buyin ~ Sellin ~ Advice

Alan Williamson

Local knowledge ~ Richmond resident

Harcourts Grenadier Real Estate
MREINZ

191 Woodham Road

381-2361/027 201-9704

SUN NING TAKEAWAYS

273 Stanmore Road, Telephone 389-3113

**CHINESE MEALS ~ FISH & CHIPS
HAMBURGERS**

HOURS

Tues-Wed: 11.30am - 2pm/4.30pm - 8.30pm
Thurs-Sat: 11.30am - 2pm/4.30pm - 10.00pm
Sun: 4.30pm - 8.30pm Mon: Closed

**PHONE ORDERS TAKEN
SMALL FUNCTIONS CATERED FOR**

**SUPPORT YOUR LOCAL
RICHMOND BUSINESSES**

**Would you like
to help fold
and/or deliver
our community
newspaper? It's a
great way to meet
people and we do
provide a cup of tea!
Please contact us at
Avebury House if you
would like to help.**

Novel gift

A local grandmother sent us this novel idea for using recycled materials as a gift for a gardener. Cost – nil. Enjoyment – priceless.

Materials: two pieces of wood fastened in a cross formation. (our reader used old fence palings) Old trousers and shirt, patched with colourful scraps of material and accessories, e.g. scarf, handkerchief, gloves. Old

footwear, (our reader used an old pair of worn out gumboots) all stuffed with supermarket bags. His head is made from a sugar sack, with bottle-tops for the eyes and straw for the hair and topped off with an old sunhat.

This scarecrow named 'Bazil' (see photograph) was so much appreciated, it spent some time propped up in the owner's lounge!



Avebury in June

**Rhythm and Rhyme
Preschool Music Group**
Friday mornings from
9.30am

Come along for musical fun and games. Learn new songs, dances, play percussion instruments, parachute and rainbow ring games.

Group sizes limited. Cost \$30 per term.

Run by trained early childhood teachers.

Phone Michelle 3529634 or 021 1750980 or Keryn 9802573 to book your place.

Embroidery classes –

Thursdays 10am–12noon

Calm surroundings with a patient experienced tutor

Ring Alison on 388-9377

for more information.

Parents Group, Monday
30 June 10–11am

Held on the last Monday of each month, this is an informal meeting with other parents over a friendly cup of tea or coffee.

**History and Heritage
group – Wednesday**
4.30–5.30pm

If you are interested in the history of this area in whatever form, do come and join us. Our next meeting is Wednesday 11 June. We are interested in obtaining any old photos or information of the Richmond area for a display.

**All enquiries about the facilities or programmes
at Avebury House, 9 Eveleyn Couzins Ave,**

please contact:

Lesley McMillan

Community Worker

Phone 9425615

Or email: avebury@paradise.net.nz

RICHMOND WORKING MEN'S CLUB & M.S.A.

P.O. Box
26-036
Christchurch



Phone
389-5778

**WE ARE PROUD
TO SUPPORT OUR
COMMUNITY**

Living it up!

Over 50s 'LEISURE FOR LIFE' EXPO AT WOOLSTON CLUB

Thursday 12 June 2003,
11.00am - 3.00pm

A warm welcome is guaranteed at the 'Over 50s Leisure for Life Expo' at the Woolston Club, 43 Hargood Street on Thursday 12 June, 11am - 3pm.

Come along and enjoy some rousing entertainment with 'The Troupers', take advantage of free health checks and sample a wide variety of recreation, health and fitness opportunities that are available in the community.

Many community groups and organisations have come together to promote the expo's theme of keeping active, healthy and enjoying life to the full.

The event has been co-ordinated by Christchurch City Council Leisure, with funding from the Hagley/Ferrymead Community Board and the venue provided by Woolston Club.

Those attending will be able to try and find out about popular activities such as tai chi, line dancing, gentle exercise to music and joining a walking group. The classics will also be on offer including gardening, indoor bowls, table tennis and cards plus an exciting range of arts and crafts to get your creative juices flowing.

Health promotion is a key focus of the day with health professionals and community groups providing information and free health checks. This will include advice on falls prevention; easy to

prepare healthy eating options and how to manage arthritis and diabetes.

The day's programme will include :-

- 11.00am - 11.30am
Event opening, entertainment
- 11.00am - 3.00pm
Health checks, arts, crafts, senior net, information etc
- 11.30am - 2.00pm
"Have A Go" Line Dancing, Tai Chi, Gentle Exercise etc
- 2.00pm - 3.00pm
"The Troupers" - live music, movement and song

There is no entry fee to the event and light refreshments will be available at a reasonable cost from the bistro. The venue will be accessible for all abilities. Plenty of parking and seating will be available.

Make the most of this day full of active creative healthy opportunities, information and entertainment. Come on your own, bring a friend or get together with a group and enjoy yourself this winter!

For more information contact Diana Saxton, Community Recreation Advisor on 941 6628 or 941 6840.

RICHMOND DENTAL CENTRE

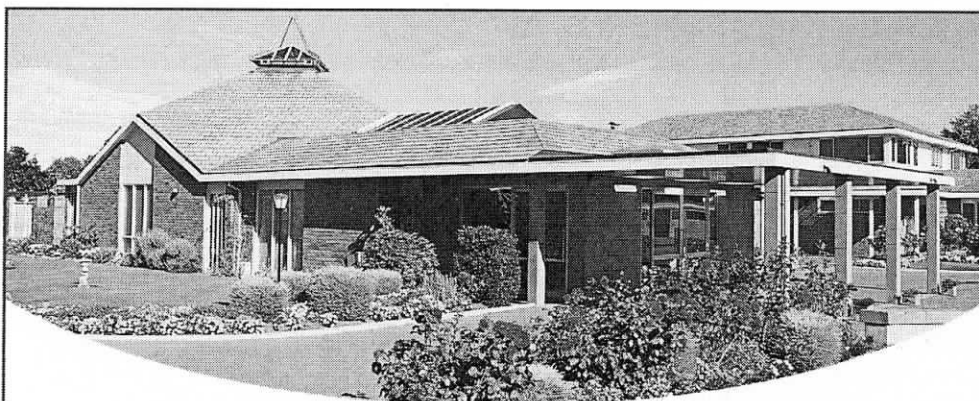
45 North Avon Road

Fran Connor B.D.S. B.Sc.

Ph: 389-5923

- New patients welcome
- FREE WINZ quotes
- Free treatment for under 18 year olds

Community Services Card Holders may pay up to \$25 for emergency treatments



John Rhind Funeral Directors

Part of the Richmond community since 1881

Operating from our original site in London Street for over 120 years, John Rhind Funeral Directors today offer a modern chapel and homely catering lounge, and a team of caring professionals, including an after-care bereavement support person.

J • O • H • N RHIND

FUNERAL DIRECTORS

Since 1881 ... a continuing family tradition

Phone
379-9920
24 hour assistance

John Rhind Funeral Directors,
19 London Street, Christchurch.
Fax (03) 366-7488





Kia ora Whanau

The school is still buzzing about camp this week, as the senior pupils went away to Living Springs in week five. As is always the way there were a few night owls but in general they all had a lot of fun!

Epe Kamsoo, our new teacher, has had a great start in Room 2 and is enjoying being part of our school.

We have 48 little pre-schoolers coming on Friday June 13 from Richmond Kindy to visit our school for the morning and join in our new sensory motor programme. The new equipment was purchased by money kindly given to us by Tuskers on Stanmore. The children will have a shared morning tea with our junior school and then back to Kindy. We look forward to their visit.

On Tuesday I was invited by the Ministry of Education to contribute to a day long workshop called 'Doing Better Together'. It is a project to help develop new and better ways of dealing with supporting families and children who have been excluded from schools.

It was an exciting opportunity and one I was thrilled to be invited to as there are only a handful of Christchurch principals that have been asked to input into this project.

Well done to our clever cross country athletes. this is the first year in a long time that Richmond has been represented in the top ten runners to qualify for the Zone finals for all of Christchurch. Not only did one child make the top ten but three children did! We are certainly very proud of these children: Daymin Kupe, Miharo Gregroy, Kararaina Te Karu, Tony Kupe, Elliot Evans and Rachel Eaves.

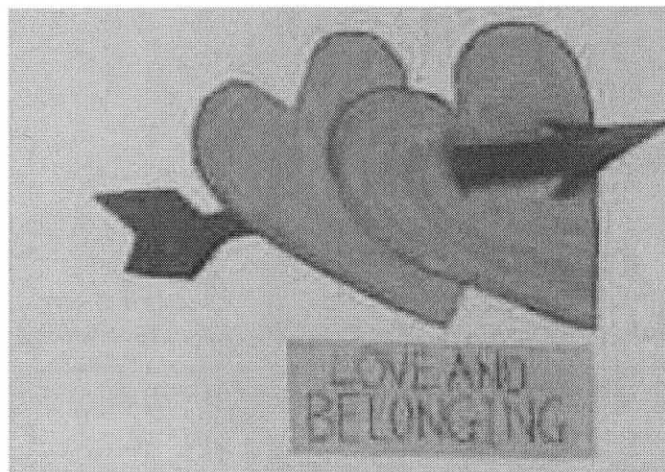
We had a lovely Kaumatua Day this month and Aunty Heeni was really pleased with how things are going at Richmond. We also had Taua Tewhe from the Arahura, Taua Hukare and the Kua Huia from Tuahiwi. It was an honour to have these wonderful role models in our school. We also had our Trivia evening at the Richmond Workingmens Club last week and this helped to raise funds for our children's sports equipment. Our next big fundraiser

is for leadership camp. Each year the senior children develop a criteria for what makes a leader at our school. the children then self-evaluate if they have met the criteria and if so they work all year to meet other leaders throughout New Zealand. Last year the children went to Auckland and the year before they went to Wellington and interviewed Ministers of Parliament. These children need to raise over five thousand dollars – and do so by washing cars, selling sausage sizzles and selling chocolates. It never ceases to amaze me that they are able to make things happen driven by their determination to

discover and explore our country and their leaders. Who know maybe one day we may get to go international...!

Annie Bowden
PRINCIPAL

News and views and items of interest are needed from you, the people of Richmond Community for inclusion in the monthly newspaper. We need your input to offer a balanced content. All contributions are treated equally and with respect. Any opinion is that of the writer only. Submissions to be sent to avebury@paradise.net.nz or to *Richmond Community News*, PO Box 26-097, North Avon.



JRfinance

*The Best Little Finance Company in
New Zealand*

**FOR CAR LOANS, PERSONAL LOANS,
DEBT CONSOLIDATION ETC**

Phone: 389 0105
268 Stanmore Road, Christchurch