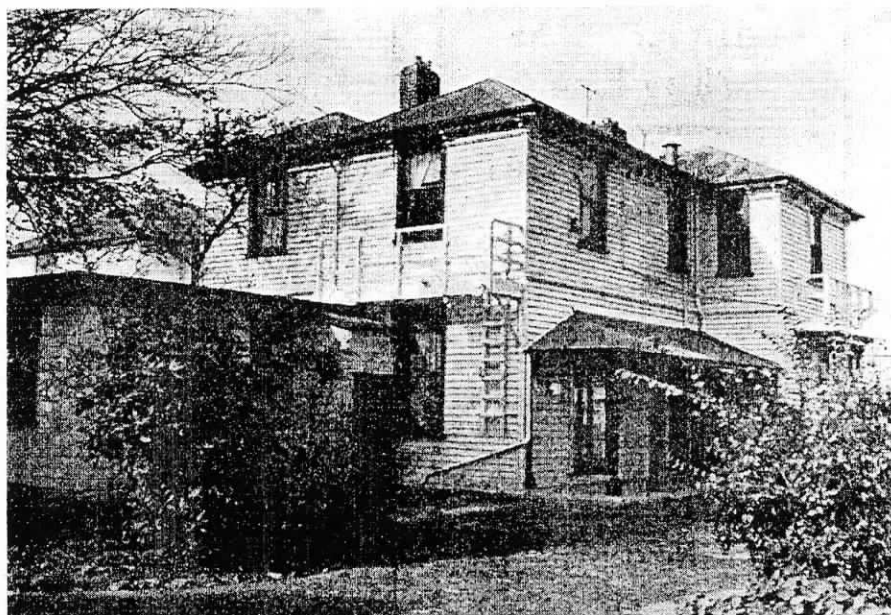


Richmond Community News

•October 2004 •

Vol 2 No 9 Issue 19

Third in the series of historic Richmond homes



THE CHRISTCHURCH BOYS HOME

Do you remember the Christchurch Boys' Home and where it was in Richmond?

Do you know the New World Supermarket in Stanmore Road?

Hadfield House stood on this site and in its later years, after being sold to the Department of Education in the early 1920's was used as a receiving home for boys, mainly from underprivileged homes and many with learning difficulties as well as behavioural problems.

Hadfield House was the home of the Hadfield family, a name well known in Christchurch. In 1917 the property, which had been in the hands of Hadfields since 1865, was transferred to A.K. Hadfield of Christchurch. While at the 1st World War A.K. Hadfield met up with a Mr Ford and they set up the business of Ford & Hadfield, auctioneers and estate agents, active until quite recently.

On the north side of the supermarket there is a weeping elm tree which is a protected heritage tree. It was planted c1865 by Joseph Hadfield the original owner of this land, an area of 8 acres.

Richmond Village Bookshop

66 North Avon Road Richmond Ph 389-5112

Under New Ownership

Easy Parking To:

*Postal services, Cards, Magazines,
Stationery, Photocopying
& wonderful service*

Janice and Jim Welcome
New & Established customers

RICHMOND

WORKING MEN'S CLUB & M.S.A.

P.O.Box

26-036

Christchurch



Phone

389-5778

www.rwmc.co.nz

**WE ARE PROUD TO
SUPPORT OUR COMMUNITY**



CORPORATE
print & copy

Cnr Moorhouse Avenue & Gasson Street P.O. Box 7232 Christchurch
Telephone 03-365 5179 Fax 03-365 1286 www.printandcopy.co.nz

Breathing L.Y.F.E into the heart of Linwood

The diversity of Linwood Youth will be on full display for 2004, with their talents and ambitions really shining through. YES. The Linwood Youth Festival Experience is back and this year's crew are letting EVERYBODY know.

The L.Y.F.E initiative was launched in 1997 to celebrate youth pride within Linwood and it's surrounding communities.

L.Y.F.E incorporates various elements of music, performance, art and sport, creating a platform of support and profiling for emerging young musicians, event managers and youth workers.

L.Y.F.E has really pulled out all the stops for 2004.

There will be food stalls, games, spot prizes, information and pretty much everything that will appeal to young people of all ages and cultures.

So... Come on down to **Linwood Park on November the 7th 2004** (Postponement date November the 14th, if wet) from **11.00am to 4.00pm**.

For further enquires contact: Waiatamai Tamehana (Event Coordinator) 03 3826596 or 021 063 2839

FREE : 1982 Suzuki A100N Motorcycle suitable for parts or restore. Motor done less than 32,000 kms.

Phone 980-4358

mantra
from Shammi's India

Richmond Village Phone 389 9997
NOW OPEN
Bookings highly recommended

Last month's solution

RCN CROSSWORD No. 1311 by GWP



The solution to
this month's crossword
will appear in
next month's newsletter

Crossword

CLUES

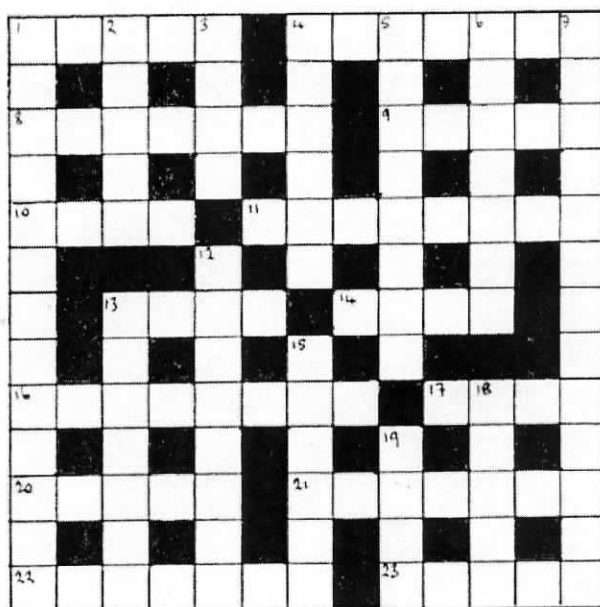
ACROSS

1. Gross (5)
4. Ratify (7)
8. Nourish (7)
9. Fragment (5)
10. Fish (pl) (4)
11. Departure (8)
13. Dutch S. African farmer (4)
14. Touched (4)
16. Frustrated (8)
17. Composer (4)
20. Tree (5)
21. Uneasy (7)
22. Propose (7)
23. Send (5)

DOWN

1. Talks (13)
2. Month (5)
3. Run straight and fast (4)
4. Scenes of action (6)
5. Gathered into folds (8)
6. Wealthy (7)
7. Decoration (13)
12. Respite (8)
13. Delivering ball (cricket) (7)
15. Clandestine (6)
18. Established principle (5)
19. Consumer (4)

RCN CROSSWORD No. 1312 by GWP



SUN NING TAKEAWAYS

273 Stanmore Road Telephone 389-3113

CHINESE MEALS ~ FISH & CHIPS
HAMBURGERS

HOURS

Tues -Wed: 11.30 am - 2pm/4.30pm - 8.30pm
Thurs - Sat: 11.30am - 2pm/4.30pm - 10pm
Sun: 4.30pm - 8,30pm Mon Closed

PHONE ORDERS TAKEN
SMALL FUNCTIONS CATERED FOR
SUPPORT YOUR LOCAL
RICHMOND BUSINESSES



"LIVE TO THE MAX!"

Making a Choice for Change

Delta Community Support Trust
PO Box 26 091, CHRISTCHURCH
105 North Avon Road

Phone: (03) 389 0219
Fax: (03) 960 3278
ciara@deltatrust.org.nz

Do you want to **"Live to the Max?"** Do you want your life to change?

Delta Community Support Trust runs a course to enable you to live life to the max! Meet with a support worker to discuss your life as it is now, then using a self-profile, we brainstorm new directions and **set new goals**. Participants are then linked to a support group of four or five others, meeting weekly for 1 1/2 hours, to help each other work towards their individual goals. These groups gather for four months. But it's not all hard work; participants enjoy meeting new friends and have fun as well.

Apply to join the "Live to the Max" Course by phoning Ciara or Chris on 389 0219.

"Explore" Course.

Do you want to **"Explore"** your world?

Discover new places? Have new experiences? Discover more about yourself and make new friends?

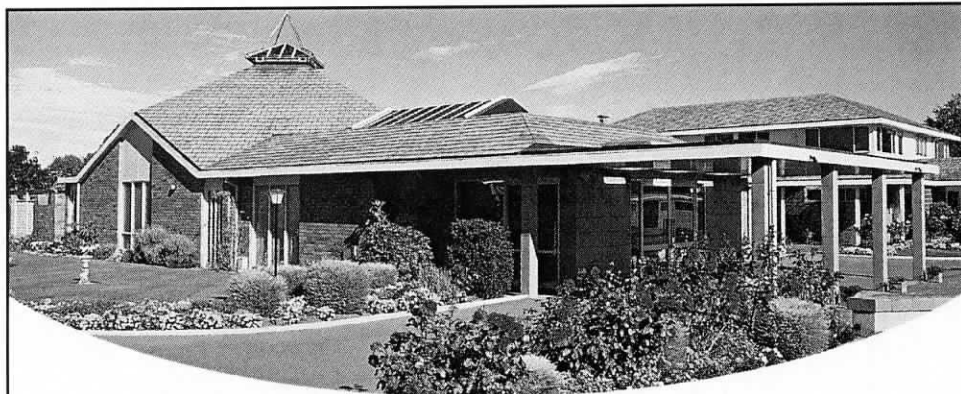
Delta Community Support Trust would like to invite you to join us once a week for 10 weeks to broaden your life experiences through fun filled mystery adventures!

To find out more please phone Ciara or Tony on 03 389 0219/0212.

Delta House, 105 North Avon Road, Richmond.

DELTA CAFE now "FOOTPRINTS CAFE"

105 NTH AVON RD OPEN NOW Hours: 10am - 2pm Mon to Thurs Coffee Tea & Food



John Rhind Funeral Directors

Part of the Richmond Community since 1881

Operating from our original site in London Street for over 120 years, John Rhind Funeral Directors today offer a modern chapel and homely catering lounge, and a team of caring professionals, including an after-care bereavement support person.

**J • O • H • N
RHIND**

FUNERAL DIRECTORS
*Since 1881 ... a continuing
family tradition*

Phone
379-9920
24 hour assistance

John Rhind Funeral Directors,
19 London Street, Christchurch.
Fax (03) 366-7488



griefcare
Accredited

What's on in October

Avebury House, situated at 9 Eveleyn Couzins Ave. Richmond, is a community-run, low cost facility which has rooms available for hire.

Situated in the midst of Avebury Park, the house which has been refurbished, has run several open days and social events.

In addition to the amenities for hire, the following classes and activities are available:

Gentle Exercise Class - Mondays 1- 2p.m

(wear comfortable clothing)

Cost \$2.50

This Sit and Be Fit class is a fun and healthy way to retain mobility, independence and meet new people. Designed especially for those with limited mobility, older adults and those with health or weight problems.

Enjoy these simple and gentle classes at your pace, and enjoy a cup of tea with us afterwards.

Richmond History Group

Held on 2nd Wednesday of each month. No cost.

Next meeting Wednesday 13th October.

History Group meets to share resources and research items of Richmond's heritage. The Richmond Room, a resource room with displays, magazines and items of interest is in the process of being set up at Avebury. These resources will be available to the public at no charge.

Postural Mat Pilates Class

New term will commence on Monday October 4th 9:30- 10:30 and a new class on Thursday evenings starting October 7th 7-8pm

All enquiries to Janet Ph 381-4414

Embroidery Group

Thursdays 10am - 12 noon

Beginners to advanced. Tuition available from a patient, experienced tutor.

Please ring Allison on 388-9377 for more information

Shirley Brownie group

Meets at 6pm every Tuesday at Avebury House.

Contact Kim on 366-5434 for details.

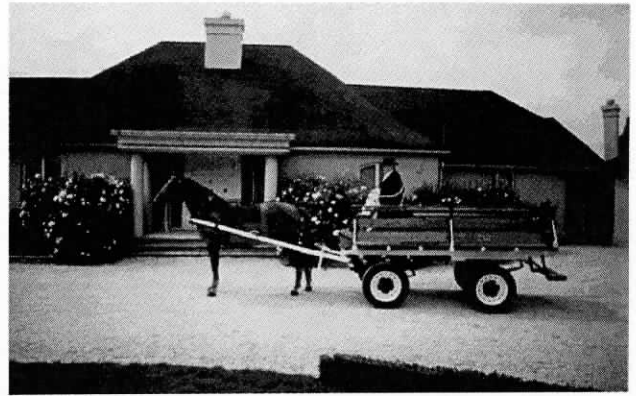
For further information about facilities and classes etc. please contact:

Lesley McMillan

Community Development Worker

Ph 942-5615

HERITAGE WEEK ACTIVITIES



ROSEMONT HORSES AND CARRIAGES

Free rides will be available at Avebury House on Saturday, 16th October, from 11.30 am to 2.30 pm. Experience the relaxation and pleasure of driving in the Southland horse and carriage.

ROSEMONT specialises in carriages for all occasions, weddings, balls, etc.

For more information contact:

MERIS (03) 312 0233



Heritage Week Open Days 2004 at Avebury 9 Eveleyn Couzins Ave (off North Avon Road)

Heritage Week 2004 runs from the 15th to the 22nd of October and to celebrate this event, Avebury House will be holding **2 Open Days** on **Saturday 16th** and **Wednesday 20th** from **10am to 4pm.**

- ❖ Craft demonstrations – embroidery, tatting, smocking etc.
- ❖ Indoor and outdoor games – MahJong, dominoes, horseshoe pitching
- ❖ Tours of the house and displays of old photos etc
- ❖ Stall offering old lace and collectibles
- ❖ Devonshire teas for gold coin donation

Saturday only

- ❖ Free horse and carriage rides 11.30am – 2p.m.
- ❖ Demonstrations of floral art

Saving our pennies C21st style

In Richmond, 37% of people are in full-time work and over 2700 people are retired. In New Zealand, most people receiving state superannuation have that as their only permanent retirement income.

The government has been looking at this situation. Literally about our futures. New Zealanders do not in general save a lot. But how can this issue be important to individuals when for too long the debate around savings levels has all been what sounds like jargon about weaknesses in our economy, gross domestic debt and our overseas debt levels?

Of course, this is a problem which concerns all of us. How many of us have bank savings lower than they should be, and credit card balances higher than they should be? And how many people with a mortgage realise that having a mortgage affects the balance of payments? These three scenarios - low bank accounts, high credit card indebtedness and mortgages and hire purchases (plus student loans) affect most New Zealanders aged under 65.

The change in savings and spending patterns among New Zealanders over the past 20 years or so worries the government because the current generation will be doubly disadvantaged in their efforts to save. Most will begin their working life with debt because of a student loan. Evidence shows that most younger people lack confidence how to save, put off difficult decisions and get into the habit of not saving. And New Zealand wage rates are still not high. In the Hagley Ward, including Richmond, only 8% of residents earn over \$40,000 but over 56% of residents are employed in full or part time work.

In 2004 the Finance Minister, Michael Cullen, set up a Savings Product Working Party to investigate this matter. Their recent report

is being looked at by the Government. I would be interested in the comments of Richmond residents on their proposals. They recommended that

- all working New Zealanders have money taken out of their salaries at source for savings and retirement;
- savings would not be locked-in but there would be some restrictions on access, based on frequency of withdrawals
- no tax incentives for this, as they tend to be expensive and benefit the better off, but instead "sweeteners" to encourage workers to join and stay in a savings plan.

Full details are available on www.beehive.govt.nz/cullen and www.retirement.org.nz or from my office on 3778840. There seems to have been a cautious welcome for this so far - but what do you think??

Tim Barnett Christchurch Central MP

In 1927 members of R.W.M.C. were forbidden to leave a horse and cart unattended for more than 20 minutes. In 1932 members lodged an official complaint about the time limit, arguing that it was too short a time considering that the road had been widened to a full chain and that London Street was out of the congested traffic area. They won their point with a warning that they would not be served after they had been on Club premises for 30 minutes.

**Closing Date for
copy and advts.
for the Nov issue
is Oct 25th**

If you would like
to help fold papers
in a friendly relaxed
atmosphere,
Phone 942-5615
Cup of tea provided

TIM BARNETT

**Christchurch
Central's
Member of
Parliament**

NEW ZEALAND
Labour



Level 3, 103 Worcester Street, PO Box 13 295, Christchurch
Phone: 03 377 8840 Fax: 03 366 4770 Cell: 0274 570 809
E Mail: tim@timbarnett.org.nz Internet: www.timbarnett.org.nz

Society of St Vincent de Paul

265 Stanmore Road

**We sell Cheap Furniture & Clothes &
All manner of goods**

★ Help us to help others ★

**All money we receive goes back to the
community**

Donations of furniture, clothes etc.
gratefully received. Pick up & delivery of
larger items. Phone 389-7484



Sixty Years living at 8 Mc Leod Street

In May 1935 Mr H.W. Beaumont brought his family to live in the middle house of three new houses on McLeod Street. These houses were built on the section where the original owner had built himself a home by carrying the timber over the Bridal Path. The area was peat swamp but when drained it made good garden ground even if the mud did sometimes claim the gardener's treasures. We once found a wedding ring which must have been tearfully searched for in vain.

The six people in the Beaumont family were Father Huia (H.W.), Mother Rosa and Pamela, Rosemary, Paul and baby Meriel. Both parents were keen gardeners and the front and back gardens began to emerge from the mud. The hens, which did not enjoy the new situation, didn't survive long but their bodies were buried by the window of the living room on the North side of the house. They became the wonderful home for the roots of the very prolific grape vine that still graces this garden. Every year these sweet grapes have been enjoyed by friends and neighbours from far and wide.

In the front South West corner of the garden a beautiful twin-trunked birch tree provided hours of happy climbing fun, while round the back many fruit trees were planted to give us plenty of fruit for ourselves and others. The blackcurrant bushes became a great place for hide and seek in the days when children from many houses round about used to congregate for energetic fun. With free flowing paths round the house connecting the front and back lawns the scene was set for "Bar the Door" and "Steal the Eggs". Our father made us a swing and a shallow pond for sailing model boats but the play house which he constructed from a car case was often the centre of operations. Both our mother and father were teachers who loved and understood children. Fortunately for us while our father was busy at school every day our mother was at home providing the axis round which our lives revolved.

On Sundays and sometimes through the week the Richmond Methodist Church was our other

home and our church friends have played a big part in our lives. Both our parents played a very significant part in the leadership of the Sunday School over many years.

The Williamsons lived next door to us and Alan told me recently how he was intrigued that our father used to set off with a book under his arm every Sunday afternoon. One day he asked, "Mr Beaumont, what is the book you always carry?" Hearing that it was the Bible didn't make the situation any clearer to Alan who thought my father must be a slow reader because he always seemed to have the same book! Alan's father read books from a different point of view but we were good neighbours.

In 1940 our father began to build a cabin cruiser in our shed. He loved doing wood work and this boat gave him a great deal of pleasure in the making and then provided hours of fun for everyone on the river between the weir at Medway Street and the estuary at Brighton. I remember the lovely shavings like fair curls I would have loved to own and the hundreds of copper nails that had to be hammered into place. The boat was called 'Rondino' meaning, in musical terms, 'Go a little way and come back again'.

All summer long the Rondino was moored in the river below the weir and on Sunday afternoons, when the jobs at home were done, we had many interesting excursions around Wainoni and up to McBratneys Road. That was far enough for an afternoon in those days when the willows reached right across the river in places and the weed was thick on the shoals. If the tide was low we children might have to do some towing with a rope from the bank to get us back home. We were seldom by ourselves as many friends loved to come for a ride.

Because my father loved to write and produce plays and my mother enjoyed doing the costumes and backdrops, scenery etc., the young people at church had the opportunity to be part of many of their productions.

After living in the Richmond area for a long time my father got to know the families in the area. People in trouble came to him for help, especially boys who needed some guidance. The local policeman used to call sometimes for extra wisdom with a difficult situation. In Christchurch Mr. Beaumont taught at Shirley Primary and Shirley Intermediate, then later at South Intermediate and finally as Education Officer at the Museum. He loved that position especially and found new friends all over Christchurch. He was a good and much loved man.

Pamela Beaumont