

Richmond Community News

• May 2005 •

Vol 3 No 4 Issue 25

Ninth in the series of historic Richmond homes



THE STORY BEHIND CAMELOT

Entering within 'Camelot' (named in memory of the Kennedy's) you sense grandeur. Tranquil gardens surround the house outdoors. With subdivision and growth of the eastern plane trees, views of the Avon River are blocked. The council documented individuals who planted these trees during the depression.

Once part of Bloom Farm, renamed (circa 1880) Woodchester Estate, Mr Henry James Turner purchased the property when it was first divided in 1910. Again divided in 1952. The front stone fence indicates the original site of the property prior to its third division in 1961. In total ten owners. Cartwrights managed an engineering business on site; the advertising pole still stands out front. Today's owners are Mr John and Mrs Beverley Evans.

In 1992 a notable Christchurch architect, the late Mr John M. Huggins, designed the north-facing veranda, and carried out interior alterations. Both John and Beverley agree that the porch was 'architecturally enhanced' by John Huggins.

John finds this spot restful.

Adorning the front door are combinations of cedar and rimu, bordered by sidelights and fanlight depicting acorns and crawling ivy. A hallway arch displays a fret of baskets on the cornice towards an Art Nouveau keystone, with egg-and-dart fascia and fluting capital.

A wooden arch in a front bedroom shows tulip cuttings with long straight stalks, keeping in harmony with its original fireplace tiles; lounge windows and brass door handle settings.

Two replaced fireplaces are tapestry brick. Three original are cast iron with tile surrounds presenting pilasters with volute and fluting capitals supporting the mantle with acanthus trusses. Vents in three rooms probably were placed to extract gas fumes. The lounge rosette depicts loose bay leaf and garland; doves perched on daggers and bow and arrows, with fruit overflowing from baskets, signifying 'Peace and Abundance'. Anthemion pattern surround Cherubs playing a tambourine and dancing on the main bedroom rosette. The lounge ceiling is panelled. Each corner moulded with acanthus scroll with lavishly decorated cavetto cornices.

"We have lived a pretty simple life," comments John. "No great dramas except when a big wattle came down in front of the lounge window - luckily not going through," says Beverley.

Jennifer Pope

crazy 24/7
CAT LOANS
PHONE 386-1247



**\$300 to
\$50,000**

**Consolidation
Car Loans, Personal Loans,
Bad Credit may not mean no**



**CORPORATE
print & copy**

Cnr Moorhouse Avenue & Gasson Street P.O. Box 7232 Christchurch
Telephone 03-365 5179 Fax 03-365 1286 www.printandcopy.co.nz

The gain Family Programme

WHAT IS GAIN?

GAIN stands for

GETTING ALTERNATIVE INFORMATION NOW

GAIN'S unique programme for young people and their parents/whanau, offers information and skills for improving family life. This ten hour course runs over five weeks and caters for parents with teenagers aged 12-16 years.

Topics covered are

- Active listening
- Assertiveness
- Decision-making & problem solving
- Rules and consequences
- Alcohol & drug information
- Dealing with pressure
- Building family self esteem
- Making healthy choices

Avonside-Richmond-Shirley Communities



Date

Thursday, 9th June – 7th July 2005

Time

7 – 9:15pm

Venue

Avebury House
9 Eveleyn Couzins Avenue
Richmond Christchurch 8001

Cost

\$25 per family

WHAT DOES IT INVOLVE?

- The GAIN Family programme is held at night over five weeks. Enrolled families must commit to this entire period.
- At least one young person and one parent or caregiver from each family must attend.
- It is preferable if the whole family attends (i.e. parents and all siblings in the 12 – 16 year age group).
- A handout is available from GAIN with some ideas to assist parents engage their teen's commitment to the course.
- Two trained facilitators run the programme. Each session is two and a quarter hours long and includes a supper break.
- GAIN is committed to making learning fun, active & relevant for young people and adults. Feedback from hundreds of families tells us that we do this well

- ~~~~~
- Sick of arguing about bedrooms, chores, curfews and homework?
 - Tired of feeling you're not listened to or understood?
 - Wondering if your parents are normal?
 - Want to get more of what you need with less aggro at work, home and school?
 - Wish you had more confidence in dealing with tricky or pressure situations?

Then consider coming to the

GAIN Family Programme

Be pro-active
get information and more skills

NOW!

For further information contact:

GAIN Co-ordinator Helen Mann

Ph 358-4507

or

(cell) 021 405039

or

e-mail Gain@snap.net.nz

What's on in May

Avebury House, situated at 9 Eveleyn Couzins Ave. Richmond, is a community-run, low cost facility which has rooms available for hire.

Situated in the midst of Avebury Park, the house, which has been refurbished, has run several open days and social events.

In addition to the amenities for hire, the following classes and activities are available:

Gentle Exercise Class - Mondays 1- 2p.m
(wear comfortable clothing) Cost \$2.50

This Sit and Be Fit class is a fun and healthy way to retain mobility, independence and meet new people. Designed especially for those with limited mobility, older adults and those with health or weight problems.

Enjoy these simple and gentle classes at your pace, and enjoy a cup of tea with us afterwards.

Richmond History Group

Held on 2nd Wednesday of each month. No cost.

Next meeting Wednesday 11th May 4 - 5pm

History Group meets to share resources and research items of Richmond's heritage. The Richmond Room, a resource room with displays, magazines and items of interest is in the process of being set up at Avebury. These resources will be available to the public at no charge.

Embroidery Group

Thursdays 10am - 12 noon

Beginners to advanced. Tuition available from a patient, experienced tutor.

Please ring Allison on 388-9377 for more information

Shirley Brownie group

Meets at 6pm every Tuesday at Avebury House.

Contact Kim on 366-5434 for details

Music & Movement for Babies & Preschoolers

Wednesdays 10.15 - 10.45 from the 4th May to 6th July 2005 Cost \$3 per family

For more information ring Ursula on 332-0633 or just come along

Flax Weaving Courses with Ali Brown

May 28 June 25 10am - 4pm. May29 10am 2pm

For further information and bookings

Ph 329-7051

For further information about facilities and classes etc. please contact:

Lesley McMillan

Community Development Worker

Ph 381-6615

Richmond Computer Net

Low Cost

Public Internet Access

for \$1 per hour

Help and Tuition provided by volunteers
available at:

Avebury House

9 Eveleyn Couzins Avenue

11am - 3pm Daily

weekends by appointment

- Six computers with fast Internet access
- Help with computer problems
- Help with e-mail and internet
- Informal 1:1 tuition
- Laser printer and C D burner available

For further information contact 381-6615

*Please note our change of phone
number and e-mail address.*

Phone : 381-6615

E-mail : avebury@xtra.co.nz

"FOOTPRINTS CAFE"

105 NTH AVON RD OPEN NOW

Hours: 10am - 2pm Mon to Thurs

Closing Date for copy and advts. for the
June issue is May 24th

RICHMOND

WORKING MEN'S CLUB & M.S.A.

P.O.Box

26-036

Christchurch



Phone

389-5778

www.rwmc.co.nz

**WE ARE PROUD TO
SUPPORT OUR COMMUNITY**

Big-and Necessary-Dollars for Special Needs Education addressed

My office is frequently contacted by parents who have a child with disabilities who want their children to learn in mainstream schools but want to make sure they have the support they need to learn well. That is a very fair ask, and we intervene as well as we can with Group Special Education, the part of the Ministry of Education which evaluates the needs of children with disabilities and behavioural problems, and provides extra resources. Of course demand always exceeds supply, although the system has got better in recent years as Labour has provided more money and given the whole area proper attention.

The challenge is great. The question is how to meet massive needs with understandably limited money. The system covers children and young people if they have a physical impairment, an intellectual impairment, hearing or vision difficulties, struggle with learning, communicating or getting along with others or have an emotional or behavioural difficulty. Most state schools, including Richmond School, include children identified as having high or medium needs, usually with teacher aide hours allocated to meet those needs.

Spending on teacher aides and other staff to deliver special education in Christchurch has doubled since Labour came to power in 1999, to \$13.9 million a year. This employs over 80 full time equivalent staff. The non-teaching funding has gone up by 86 per cent, to \$4.2 million a year. Now the Government has just announced a further \$30 million boost to the special needs budget - meaning about \$3 million a year to be spent in Christchurch. What this means is that there will be more teacher aides over the next four years to ensure that those pupils that require one-on-one tuition will receive it.

Extra funding for students with severe behaviour difficulties, severe speech and language difficulties plus early intervention

funding for children aged 0-5 years with high support needs will also be addressed over the next four years.

Many Christchurch people took part in Ministry consultation meetings on special education - the report is available from the Ministry of Education's office or on www.minedu.govt.nz/index.cfm?layout

Tim Barnett

TIM BARNETT

**Christchurch
Central's
Member of
Parliament**

NEW ZEALAND
Labour

Level 3, 103 Worcester Street, PO Box 13 295, Christchurch
Phone: 03 377 8840 Fax: 03 366 4770 Cell: 0274 570 809
E Mail: tim@timbarnett.org.nz Internet: www.timbarnett.org.nz



Letters To The Editor

Hi,

Does anyone have any historical info on our house at 135 River Road? It is about 100 years old....we have lived there about a year and a half and are interested in finding out anything...as far back as possible. People can contact me on my home e-mail: nikinooz@paradise.net.nz or phone 3633567/fax3633524

Niki Mareno

People seeking documentation about houses can also contact LINZ (Land Information New Zealand -0800 665 463) and look up the coveyance reports - facts and figures - also the McDonald Files and the microfiche indexes on the second floor in the New Zealand References section in the Central Library.

The Richmond History Group are seeking any photos, documentation or other information about the Richmond area to build up the resources in our Richmond History Room at Avebury House, which will be open for public use. All information/photos can be copied and the originals returned.

Knitting machine to give away.

Contact:

E. Winter

252a Avonside Drive

Ph 981-3231

FOUR GENERATIONS OF A RICHMOND FAMILY

James Mundy, a carpenter and his seventeen year old bride Eliza Phillips Trestrail, arrived at Lyttleton on the "Huntress" in 1863. They settled at 99 Peterborough Street where they raised their large family. The two older boys, William and James, were both first day pupils at Bingsland (Richmond) School, built in 1873. The women's first electoral roll for New Zealand listed all the Mundy family.

James married Ann Jane Thompson in 1899 and settled at 10 Stapletons Road, before building a modern T-style house at 16 Stapletons Road circa 1911, where he grew his own tobacco. James operated his own sawmill where 182 Stapletons Road is today and had the milling rights to cut manuka in the Bingsland area from Shirley Road to Avonside Drive. He had a timber yard on the corner of Gayhurst Road and Mundys Road (named after the family). They had three children, James, Frederic and Ivy and the two boys were on the register at Bingsland School in 1906.

James married Kathryn Beckett and they owned houses at 81 and 88 Avalon Street. He was a painter with the Public Works and a preacher at the Evangelical Church in North Avon Road (later a mission and then a Baptist Church). His 1850's house and his son's nearby, were both demolished in 1968 to make way for a carpark at the Richmond Workingmen's Club. They had three children, Stan,

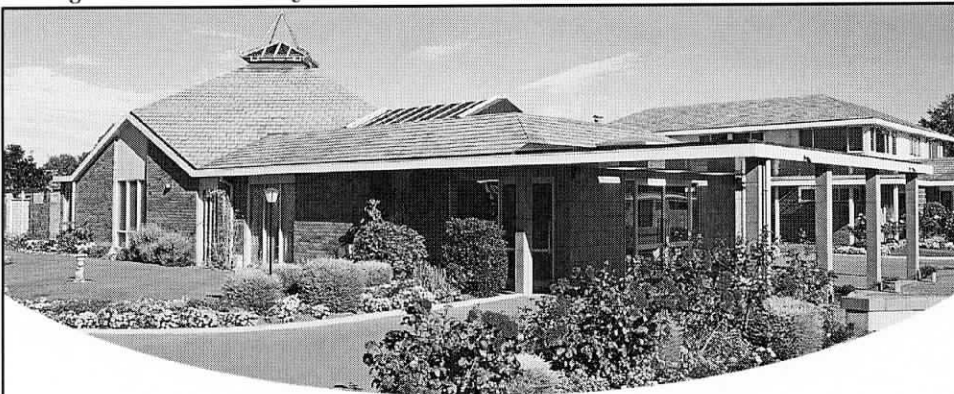


FREDERIC CORNWALL MUNDY b.1901

Kath and Reg.

Frederic married Nellie Jackson and lived at 10 then 211 Oliviers Road. He owned a joinery business in Barbados Street (near the old "Star and Garter" Hotel). They had six children, Gwen, Marjorie, Ken, twins June/Allan and David.

Our acknowledgement to Allan Mundy (fourth generation Mundy with a connection to the Richmond area and a life member of the RWMC) for this information.



John Rhind Funeral Directors

Part of the Richmond Community since 1881

Operating from our original site in London Street for over 120 years, John Rhind Funeral Directors today offer a modern chapel and homely catering lounge, and a team of caring professionals, including an after-care bereavement support person.

**J • O • H • N
RHIND**

FUNERAL DIRECTORS
*Since 1881 ... a continuing
family tradition*

Phone
379-9920
24 hour assistance

John Rhind Funeral Directors,
19 London Street, Christchurch.
Fax (03) 366-7488



Disclaimer

All original matter produced in this newspaper remains the property of the publisher and cannot be reproduced in any way without written authority from the publisher. No responsibility is accepted for incorrect information contained in advertisements or editorials. Views and opinions expressed in Richmond Community News are not necessarily those of the Editor or Avebury House Community Trust. Advertisements for publication are accepted in good faith and publication of an advertisement does not imply endorsement by Avebury House Community Trust.