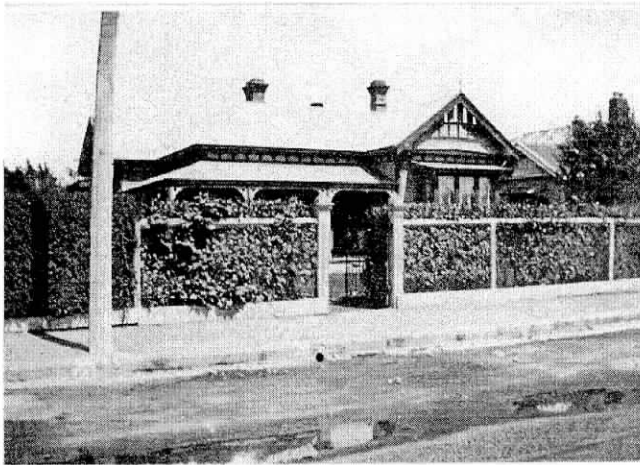


Richmond Community News

• July 2005 •

Vol 3 No 6 Issue 27

Eleventh in the series of historic Richmond homes



158 (92) North Avon Road

This house was one of four built by the Petries along North Avon Road of which three still exist. It looked straight up Petrie Street and the photograph was probably taken around 1920 or earlier. Notice the unsealed road and the tramlines slightly above the road level. At the time it was taken North Avon Road did not go straight through to Hills Road but followed the present McLeod, Avalon and Whitmore Streets to the corner of Bealey and Fitzgerald Avenues. About 1930 as houses were built at the western end North Avon Road went straight through to Hills Road, was renumbered, and 158 became 92. In recent years the house has been replaced with the present residences.

In 1917 Thomas Harrall, clothing manufacturer, the second son of Thomas and Margaret Harrall who lived in Leeds, Yorkshire, occupied this house. Perhaps the photo was taken to show the parents where he lived. It must have been a sharp and attractive contrast to the housing in the industrial north of England because

on 27 September 1920 Thomas and Margaret arrived in Auckland aboard R.M.S Athenic together with two unmarried sons, their oldest daughter, her husband and 4-year-old son, 2 unmarried daughters and their fiancés, and the fiancée of one of the sons. They all moved in to 158 North Avon Road. The engaged couples were all married at Richmond Methodist church during the next year and began their married lives in Richmond, most spending the rest of their lives in the district. Another son, his wife and daughter came in 1921 and bought a house in Tweed Street. All except one of Tom and Margaret's eight New Zealand grandchildren went to Richmond School.

The last record of a Harrall at 158 North Avon Road is in the City Council Roll of 1927.

This is where the families lived:

Thomas Harrall married Margaret Hill at Greymouth in 1923 and in the 1930s was licensee of the Royal George in Fitzgerald Avenue.

Willie and Violet Frankland lived at 58 London Street.

Ernest and Sarah Harrall lived in Vogel Street before moving to Linwood.

Albert and Margaret Burn lived first in Vogel Street but later at 327 Stanmore Road, formerly Corkery's shoe repair shop. In retirement they lived in Nicholls street.

Albert and Bertha Rawson lived in Petrie Street.

Albert and Louise Harrall lived in Tweed Street.

George and Ida Harrall (Ida and Louise were sisters) lived in Tweed Street until moving to Bromley in 1941.

The last descendant of Thomas and Margaret Harrall to live in Richmond was Roy Burn who moved from Randall Street in 1993.

Ted Harrall

Crazy **24/7**
CAT LOANS
PHONE 386-1247



**\$300 to
\$50,000**

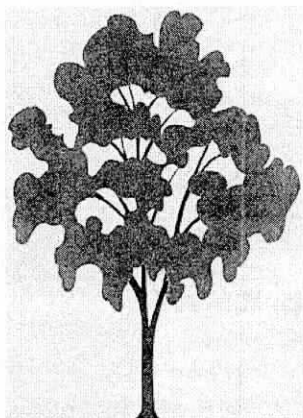
Consolidation
Car Loans, Personal Loans,
Bad Credit may not mean no



CORPORATE
print & copy

Cnr Moorhouse Avenue & Gasson Street P.O. Box 7232 Christchurch
Telephone 03-365 5179 Fax 03-365 1286 www.printandcopy.co.nz

The Evergreen Club



A 'Delta Community Service' for older citizens and their caregivers.

Initially, the club will be open on Tuesdays and Fridays, from 9am until 3pm.. There will be a varied program, hot meal at noon and transport can be provided. For more information or reservations, please ring 382- 0758 (and leave a message for Patricia Ducker)

Crossword CLUES

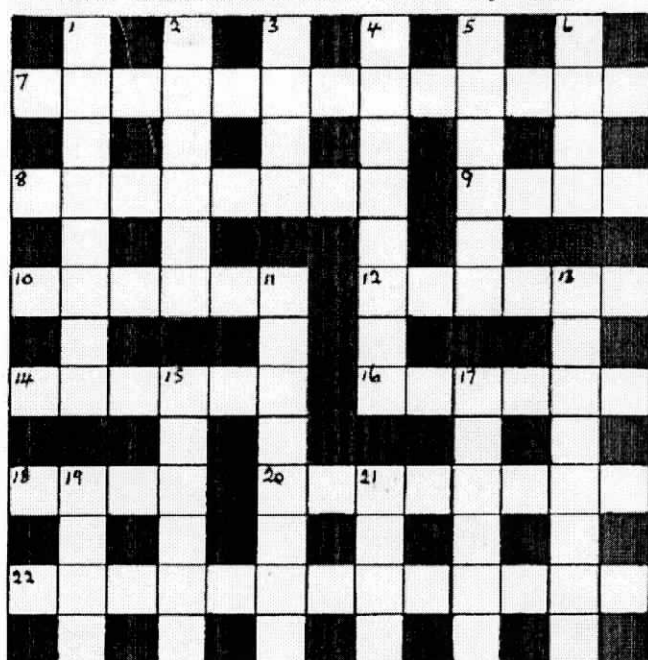
ACROSS

7. Written copy (13)
8. Opening (8)
9. Ceremony (4)
10. Entreated (6)
12. In any case (16)
14. Deprive of wind (6)
16. Outcasts (6)
18. Tail (4)
20. Imagine (8)
22. Opposed (13)

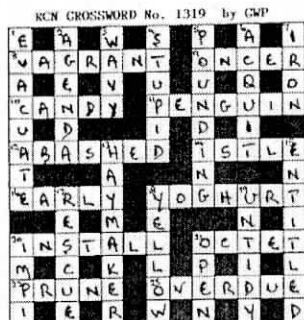
DOWN

1. Travel across (8)
2. Power (6)
3. Unbleached linen (4)
4. Luminous meteor (8)
5. Tempestuous (6)
6. Fortified wine (4)
11. U.S. Politician (8)
13. Ant-eater (4-4)
15. Shrewd (6)
17. Attractive (6)
19. Reap (4)
21. Catch (4)

RCN CROSSWORD No. 1320 by GWP



Last month's solution



The solution to
this month's crossword
will appear in
next month's newsletter

SUN NING TAKEAWAYS

273 Stanmore Road Telephone 389-3113

CHINESE MEALS ~ FISH & CHIPS HAMBURGERS

HOURS

Tues -Wed: 11.30 am - 2pm/4.30pm - 8.30pm
Thurs - Sat: 11.30am - 2pm/4.30pm - 10pm
Sun: 4.30pm - 8,30pm Mon Closed

PHONE ORDERS TAKEN
SMALL FUNCTIONS CATERED FOR
SUPPORT YOUR LOCAL
RICHMOND BUSINESSES

Richmond History Room

Over the past two years the Richmond History Group have been collecting information, books, memorabilia, tapes and photographs to store in our Richmond Room at Avebury House. We also have internet access to other sources of information.

We are always interested to increase our resources and this facility is open for public use free of charge, between the hours of 10am -4pm Monday to Friday and Saturday and Sunday by arrangement.

If you would like further information, please contact Lesley on 3816615

Genealogy

Are you interested in learning about your family tree? Or learning how to trace long lost relatives? Avebury House is considering holding classes in this fascinating pastime and would like to invite expressions of interest.

Please contact us at Avebury House if this appeals.

Phone 3816615 or email us at:
avebury@xtra.co.nz

Richmond Computer Net

Low Cost

Public Internet Access

for \$1 donation per half hour

Help and Tuition provided by volunteers
available at:

Avebury House

9 Eveleyn Couzins Avenue

11am - 3pm Daily

weekends by arrangement

- Six computers with fast Internet access
- Help with computer problems
- Help with e-mail and internet
- Informal 1:1 tuition
- Laser printer
- C D burner available on request (enquire at office)

For further information contact 381-6615

Closing Date for copy and advts. for the
August issue is July 19th



John Rhind Funeral Directors

Part of the Richmond Community since 1881

Operating from our original site in London Street for over 120 years, John Rhind Funeral Directors today offer a modern chapel and homely catering lounge, and a team of caring professionals, including an after-care bereavement support person.

J • O • H • N
RHIND

FUNERAL DIRECTORS
*Since 1881 ... a continuing
family tradition*

Phone

379-9920

24 hour assistance

John Rhind Funeral Directors,
19 London Street, Christchurch.
Fax (03) 366-7488



What's on in July

Avebury House, situated at 9 Eveleyn Couzins Ave. Richmond, is a community-run, low cost facility which has rooms available for hire.

Situated in the midst of Avebury Park, the house, which has been refurbished, has run several open days and social events.

In addition to the amenities for hire, the following classes and activities are available:

Gentle Exercise Class - Mondays 1- 2p.m
(wear comfortable clothing) Cost \$2.50

This Sit and Be Fit class is a fun and healthy way to retain mobility, independence and meet new people. Designed especially for those with limited mobility, older adults and those with health or weight problems.

Enjoy these simple and gentle classes at your pace, and enjoy a cup of tea with us afterwards.

Richmond History Group

Held on 2nd Wednesday of each month. No cost.

Next meeting Wednesday 13th July 4 - 5pm
History Group meets to share resources and research items of Richmond's heritage. The Richmond Room, a resource room with displays, magazines and items of interest is in the process of being set up at Avebury. These resources will be available to the public at no charge.

Embroidery Group

Thursdays 10am - 12 noon Resumes July 28th
Beginners to advanced. Tuition available from a patient, experienced tutor.

Please ring Allison on 388-9377 for more information

Shirley Brownie group

Meets at 6pm every Tuesday at Avebury House.
Contact Kim on 366-5434 for details

Music & Movement for Babies & Preschoolers

Wednesdays 10.15 - 10.45 from the 27 July to 21st September 2005 Cost \$3 per family
For more information ring Ursula on 332-0633 or just come along

Flax Weaving Courses with Ali Brown

June 25 10am - 4pm. For further information and bookings Ph 329-7051

For further information about facilities and classes etc. please contact:

Lesley McMillan

Community Development Worker

Ph 381-6615

"FOOTPRINTS CAFE"

105 NTH AVON RD OPEN NOW

Hours: 10am - 2pm Mon to Thurs

Please note our change of phone number and e-mail address.

Phone : 381-6615

E-mail : avebury@xtra.co.nz

THROUGH ANOTHER WAR

Having just recuperated properly from the Depression, the R.W.M.C. was now faced with another war. Protection of World War 2 servicemen's membership was a priority - no member was penalised for non-payment of subscriptions while in the armed services and any member going overseas automatically became a life member. This was later refined so that any pre-war member going overseas was granted life membership.

There was also concern about the "excessive" number of free drinks. While no agreement could be reached on regulating shouts, there were firm thoughts that less should be spent on free drinks and more on evening entertainment. Ron Grant retired - again in 1941, handing over the keys to Eric McPherson after 9½ years. McPherson was sure "the present good standing of the club, both from a financial and social point of view, was to a large extent due to Mr Grant's initiative and ability.

The grim side of war caught up with the club on May 20, 1941 when tribute was paid to D Neil, the club's first war casualty; and Secretary Max Mills had to resign because of his duties as an air force officer. But there was brighter news in Christchurch when another member, Ernie Andrews was elected Mayor.

RICHMOND

WORKING MEN'S CLUB & M.S.A.

P.O.Box

26-036

Christchurch



Phone

389-5778

www.rwmc.co.nz

**WE ARE PROUD TO
SUPPORT OUR COMMUNITY**

Labour Cares

My office deals with many tragic cases, but a recent case of a Richmond elderly couple where the wife had severe dementia and the husband, as the main carer, had become so overwhelmed and isolated by their situation, that it wasn't until the basic necessities of life started falling apart that people realised help was needed, this indeed was tragic.

There is growing recognition that unpaid carers need better support. As our population ages and as people with higher and more complex needs move away from being institutionalised and stay in community living, many carers have struggled to cope with the physical and emotional demands of their work. Often knowing where to go or having time to ask for help becomes just another task.

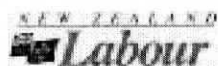
The Labour Government has increased funding for home based support in 2005/6 by \$18.7 million. This comprises of \$12.4 million for older New Zealanders and \$6.2 million for younger people with disabilities. But is the money enough? Good Governments need to be both proactive and responsive. Carers NZ estimates that the unpaid work of carers has an annual economic value to New Zealand of at least \$9 billion. This is an extraordinary contribution.

The needs for carers are very unique to each individual situation. It is essential that our (government funded) services contain provisions for home help, personal care and carer relief that can be easily accessed and understood by carers such as our Richmond husband. Whilst as a Government we will continue to explore and consider how to achieve the best policy to ensure that carers assessments of needs are also considered along with the needs of the patient, I will continue to work on a local level with constituents to try and improve their immediate needs.

Tim Barnett
Member of Parliament
Christchurch Central

TIM BARNETT

**Christchurch
Central's
Member of
Parliament**



Level 3, 103 Worcester Street, PO Box 13 295, Christchurch
Phone: 03 377 8840 Fax: 03 366 4770 Cell: 0274 570 809
E Mail: tim@timbarnett.org.nz Internet: www.timbarnett.org.nz

Green Party Public Meetings

Warm Homes, Clean Air & Sustainable Energy

Jeanette Fitzsimons Friday July 8th 7:30pm
Oxford Baptist Church

Warm Homes, Clean Air & Sustainable Energy

Jeanette Fitzsimons Saturday July 9th 10:30am
Linwood Ave Union Church Cnr Linwood & Tilford

An Inclusive & Diverse Society

Keith Locke Tuesday 19th July 7pm
WEA Gloucester St

"Challenges to our human rights (in the light of George Bush's so-called "war on terror" and Winston Peters anti-immigrant campaign) and the presentation of our Human Rights policy to counter such attacks."

Marine Issues Meeting Organised by the Akaroa Harbour Marine Protection Society.

Jeanette Fitzsimons will be speaking along with Minister of Conservation Chris Carter, Phill Heatley the National Party Spokesperson on Fisheries from Whangarei, and a representative from United Futures. Wednesday 13th July 7:30 - 9pm Conference Room Holiday Inn 356 Oxford Tce Admission \$5

The Shirley, Richmond and Dallington Residents Associations

Invites those living in these areas to a public presentation

Monday 11th July 2005 at 7:30pm

Venue: Shirley Intermediate school Hall
Cnr of Nth Parade & Shirley Rd

The presentation of an upgrade to the area of a kilometre around "The Palms" in Shirley.

The purpose of the meeting is seeking community views on input to upgrade of this area

Avebury House Community Trust Annual General Meeting

Venue: Flesher Rm Avebury House
7:30 pm Thursday July 14th
All welcome
Refreshments provided

The HARCOURTS advantage

Buying ~ Selling ~ Advice



Alan Williamson
Local Resident
Local Knowledge
Harcourts Grenadier Real Estate
MREINZ
191 Woodham Road

381-2361 / 027 201-9704



Last week Ruawhiti and Whaea Chrissie presented a paper at the Te Akatea National Educational Conference at Waitangi. From the feedback forms and messages from the conference organisers they were obviously very inspirational. They then carried on to Auckland to plant some of our Pa Harakeke with Aunty Heeni, Maire, Karen and Roman. They had a wonderful time.

This week is our end of term and I am sure the children, teachers and whanau are all looking forward to some time to relax and enjoy their families.

Many thanks to all the whanau who supported, attended and helped at Matariki. We had a wonderful weekend with excellent speakers and workshops. A special thanks also to Aunty Heeni, Whaea Eva, Matua Toby, Hazel Phillips and Lynn Te Aika for their informative sharing. A special thanks to our school whanau who all worked extremely hard for several weeks to ensure such a smooth running and successful programme. Thank you to Tui Amohanga, Tania Te Karu and Whaea Chrissie for all their extra work and organisational skills.

During Matariki we celebrate our unique place in the world. We give respect to the whenua (land) on which we live and admiration to our mother earth Papatuanuku. Throughout Matariki we learn about who came before us. Our history. Our family. Our bones. Matariki signals growth. It's a time of change. It's a time to prepare, and a time of action. During Matariki we acknowledge what we have and what we have to give. Matariki celebrates the diversity of life. It's a celebration of culture, language, spirit and people. Matariki is our Aotearoa, Pacific New Year.

We wish Aunty Heeni and Te Rapana Trust members all the best and a safe return from America next month as they are supporting Papa Joe in his healing and fertility practise.

CONDOLENCES

It has been a very sad week with a number of whanau tangi.

We farewelled

Allan Williamson, father of Janet Pask Rm 2 and father-in-law to Lawrence.

Lois Horgan, mum of Tristan (Sports Coordinator) and mother-in-law to Kala Rm 8.

Betty Annear, mum of Jill and mother-in-law to Peter Rahui (Teacher Aide). Our deepest sympathy to all families, during this sad time.

Arohanui from the school whanau.

Annie Bowden
PRINCIPAL



Annie
& Janet
planting

Daph and
moko



Ihaka
and son



Can anybody help?

The archivists at Avebury House, have an old turn-of-the-century leather collar box and would appreciate a few detachable collars (were they celluloid?) for display purposes.

Please ring Avebury House 381-6615 for someone to collect, or drop them into the office.

Thank You

**List with me For
1% selling fee. GST +
marketing to suit vendor**

**For
Gold Service**

**Ph Evelyn Sheridan
027 228 0754
Diane Astle Realty
Ph384 7826
M.R.E.I.N.Z.**



Disclaimer

All original matter produced in this newspaper remains the property of the publisher and cannot be reproduced in any way without written authority from the publisher. No responsibility is accepted for incorrect information contained in advertisements or editorials. Views and opinions expressed in Richmond Community News are not necessarily those of the Editor or Avebury House Community Trust. Advertisements for publication are accepted in good faith and publication of an advertisement does not imply endorsement by Avebury House Community Trust.