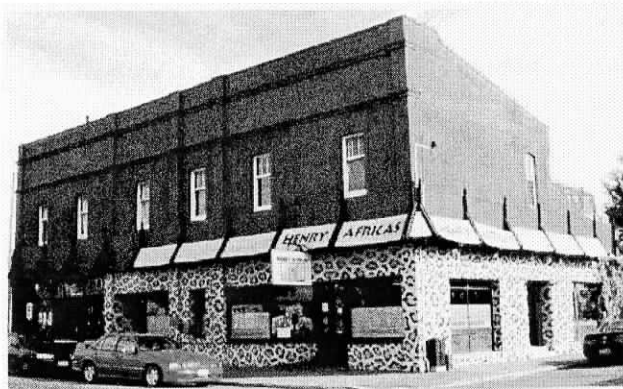


Richmond Community News

•September 2005 •

Vol 3 No 8 Issue 29

Thirteenth in the series of historic Richmond homes



321/323/325 Stanmore Road

This now historic building called the "CADENA" built in 1912 as part of the Flesher Estate, was of new modern design, with three shops at ground level and two living areas above and at the rear. The exterior has hardly changed at all except for a curved varandah along the length of frontage on Stanmore Road. The original outside rear woodshed, washhouse, toilet and meatsafe are still standing. The interior has had major alterations, walls demolished, walls built doors blocked off, doors added, windows removed or altered, staircases built in and archways added. The only original features are six ceiling roses and one staircase. The six windows facing east upstairs were bedrooms, with a long wide landing running the length of the building, two bathrooms and two staircases facing west. The kitchens and living areas were downstairs, in an enclosed backyard with access from Avalon Street.

Number 323 (now 325 on the corner) had a front door on Avalon Street (still there today) and a shop entrance on Stanmore Road (Henry Africa's Restaurant). The first occupants were Clarice and Charles Shaw, who had a fruit and vegetable business and hawked produce as far as Marshland. Clarice was a piano teacher and a singer, Charles had a horse shelter out the back where he kept two racehorses. One called Treasure Seeker netted him a £24 win, (a lot of money in those days).

Number 321 had a door on Stanmore Road (Mac's Ales Sign) and shop entrance where Jane's

Wine Bar is today. The front door led into a dark passage going straight to the rear of the living area. Mr Leo Shaw, born in this building in 1914, remembers one Christmas riding his new trike up and down the upstairs landing. He also remembers his father losing his key and attempting to climb in the upstairs bathroom window (visable from Avalon Street). Unfortunately he climbed in the wrong window and Mrs Farrar next door called to her husband "Sam, Sam, there's a man"

The shop inbetween, without accommodation, was occupied by a tailor called James Hooper, it later became the Post Office with a half-penny, one penny and three penny stamp vending machine outside. Progressively over the 1920/1930/1940/1950 era this building housed Pruden, an artist, Sutherlands the grocer, Self Help managed by Bert Hicks, Stevenson a butcher with stock in Hills Road, Farrar a butcher, Mc Pherson's Butchery and a bookshop. Henry Africa's Restaurant took over the building in 1972.



Richmond



Ph 381-5980

★ **5%**

**Discount to
Pensioners every
Tuesday**

★ **Conditions
Apply**

**Stock excluded are :
Tobacco - Instore specials**

In September this year "The Richmond Village Community Creche" on the corner of London and Pavitt Streets, celebrates its 20 year anniversary and would like to extend an invitation to any ex teachers, ex pupils and or family members to attend its celebrations. The Creche is having an open morning and luncheon BBQ on Wednesday 28th September from 10am to 1pm.

Originally created by mothers, who saw the need for good childcare, we have a maximum of 12 children per 3-hour session, providing high quality care at a low cost.

We are a multicultural Creche and have pupils from Australia, Thailand, Somalia to name a few.

Our two valued teachers have been at the Creche for over 12 years and help provide wonderful care from the ages of 2 through to 6 years of age.

We are a happy relaxed Creche and enjoy our work within the Richmond Community.

Should you be interested in attending our celebrations please phone our Creche on 381-1764 and leave your postal and or phone details.

Looking forward to seeing you.

PAPA'S PIZZA Cnr Hills & Shirley Rds

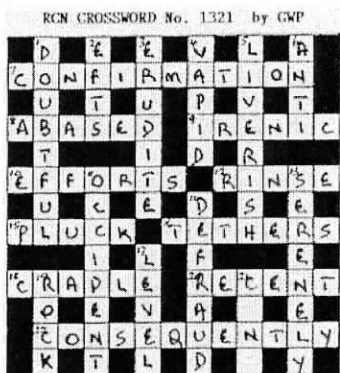
Local family business making some of the BEST PIZZA you'll ever eator your money back

As many toppings as you want
incl: Gourmet & 1/2 & 1/2
at NO extra cost.

Value - Quality & Superfast service
that can't be beaten.

Ph 386-1177 for pickup and delivery

Last month's solution



The solution to this month's crossword will appear in next month's newsletter

Crossword

CLUES

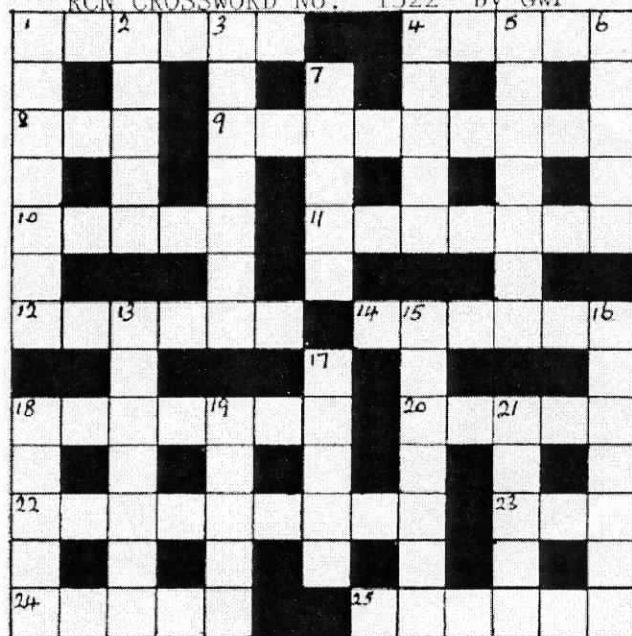
ACROSS

1. Compensate (6)
4. Regarding (5)
8. Beer (3)
9. Head of republic (9)
10. Thoughts (5)
11. Combined (7)
12. Alters (6)
14. Admission (6)
18. Quotas (7)
20. Tempts (5)
22. Custom (9)
23. Compete (3)
24. Frequently (5)
25. Heavenly body (6)

DOWN

1. Comprehend (7)
2. In what place (5)
3. Slept (7)
4. Stage whisper (5)
5. Late arriving (7)
6. Carried (5)
7. Plants (5)
13. Withdraw (7)
15. Officer (7)
16. Dubious (7)
17. Savoury jelly (5)
18. Proportion (5)
19. Pungent bulb (5)
21. Bird (5)

RCN CROSSWORD No. 1322 by GWP



SUN NING TAKEAWAYS

273 Stanmore Road Telephone 389-3113

CHINESE MEALS ~ FISH & CHIPS
HAMBURGERS

HOURS

Tues - Wed: 11.30 am - 2pm/4.30pm - 8.30pm
Thurs - Sat: 11.30am - 2pm/4.30pm - 10pm
Sun: 4.30pm - 8.30pm Mon Closed

PHONE ORDERS TAKEN
SMALL FUNCTIONS CATERED FOR
SUPPORT YOUR LOCAL
RICHMOND BUSINESSES

What's on in September

Avebury House, situated at 9 Eveleyn Couzins Ave. Richmond, is a community-run, low cost facility which has rooms available for hire.

Situated in the midst of Avebury Park, the house, which has been refurbished, has run several open days and social events.

In addition to the amenities for hire, the following classes and activities are available:

Gentle Exercise Class - Mondays 1- 2p.m
(wear comfortable clothing) Cost \$2.50

This Sit and Be Fit class is a fun and healthy way to retain mobility, independence and meet new people. Designed especially for those with limited mobility, older adults and those with health or weight problems. Enjoy these simple and gentle classes at your pace, and enjoy a cup of tea with us afterwards.

Richmond History Group

Held on 2nd Wednesday of each month. No cost.
Next meeting Wednesday 10th August 4 - 5pm
History Group meets to share resources and research items of Richmond's heritage. The Richmond Room, a resource room with displays, magazines and items of interest Has been set up at Avebury. These resources are available to the public at no charge.

Embroidery Group

Thursdays 10am - 12 noon
Beginners to advanced. Tuition available from a patient, experienced tutor.
Please ring Allison on 388-9377 for more information

Shirley Brownie group

Meets at 6pm every Tuesday at Avebury House. Contact Kim on 366-5434 for details

Music & Movement for Babies & Preschoolers

Wednesdays 10.15 - 10.45 from the 27 July to 21st September 2005 Cost \$3 per family
For more information ring Ursula on 332-0633 or just come along

Flax Weaving Courses with Ali Brown

Sept 3 & Oct 15 10am - 4pm. For further information and bookings Ph 329-705 Ali Brown

CAGCY "Like minds"

Gifted pre-school and home-educated childrens group
Fridays 12:30 - 2:30 CAGCY's Like Minds Preschool Playgroup is looking for donations of toys. If you have any dress-ups, puzzles, games, childrens books, dolls, ride on toys, playhouse toys, lego or other construction type toys they would be greatly received. For more information phone Kate 386-0074

For further information about facilities and classes etc. please contact:

Lesley McMillan

Community Development Worker

Ph 381-6615

Richmond Property Values Continue To Soar

The latest statistics from the Real Estate Institute paint a very bright picture for Richmond residents.

Those of us who live in the area know full well the many benefits Richmond offers, our range of local businesses, good businesses owned and operated by real local people, its cosmopolitan population we can all learn from one another, a strong community spirit and our close proximity to the central city, Richmond has a heart and soul lacking in many newer suburbs.

With much inside the four avenues real estate now very highly priced, St Albans and Richmond are benefiting from the spill over affect - the price lift the inner city experienced is also happening in St Albans, Richmond and the spill over effect is pushing that lift.

For many years the Dallington, Shirley, St Albans zone was seen as a good investment area. The transient nature of the population is changing as many of the homes that were rental properties have been purchased by young couples to be converted back to nice family homes.

What then has been the effect of this change - it has been a lift in values. Dallington, Richmond, Shirley, St Albans zone a median sale price of \$269,000 this well up on the June 2004 median of \$227,500.

The growth in real value for property in the area is well illustrated when we look back on the June 2001 statistics and see that the median sale price was \$143,750.

Our zone median price of \$269,000 is interesting when you compare to those previously more popular suburbs Avonhesd, was just behind us at \$267,250, who would have believed that if you would have been told a year or so ago that that might happen. The current fuel price crisis will make close to the inner city living more popular.

Our zone \$269,000 stacks up very well against Riccarton/ Upper Riccarton's \$247,000 and the seaside suburbs \$250,000.

From the June 2005 statistics it is very interesting to note several sales at over \$300,000 in Richmond.

New developments happening or planned for the area can be expected to further enhance the values of existing homes.

The Christchurch City Council district plan pays careful attention to sub-division requirement, building bulk and density will be considered alongside the effects on the neighbourhood.

Developers keen to get the best market value they can for their developments will invest in open space outdoor furniture and landscape plantings.

For those of you who are maybe considering taking advantage of the current lift in values and contemplating selling, I would give you one important piece of advice. There are a small group of real estate salespeople who specialise in your area, if you plan on selling, use one of these people. As the area becomes more popular you will be inundated by agents from outside the area, stick to your locals.

I believe local knowledge is very important, particularly in Richmond, your agent needs to have this local knowledge to really understand the benefits Richmond has to offer. This knowledge will impact on your selling price, remember you only get one shot at this.

Most of your local agents advertise in this publication.



**Natalie
Cutler-Welsh
Neighbourhood
Support Volunteer
& Green Party
Candidate for
Christchurch
Central**

Children are the Future

By Natalie Cutler-Welsh, Green Party Candidate for Christchurch Central.

Children are the future and giving them a good start and a world worth inheriting is what the Green Party aims to do! In order to keep the environment and economic sustainability and social justice a high priority for Government, we need to get 5% of the 'Party Vote' in the upcoming election. This is why, when I'm not working I put all my time and energy into campaigning. This election is about so much more than tax cuts and it has been heart-warming to attend various political panels and to hear more and more people acknowledging this. I have also been putting up billboards (clean rivers, healthy food, public transport, fair society....) as well as door-knocking in Richmond lately and it has been wonderful to chat with people of all ages and backgrounds. As a neighbourhood support co-ordinator, it is important to encourage some of the values that have been forgotten and to help create a society that is healthy and happy rather than merely 'productive'.

As the Christchurch Central candidate I am standing in Tim Barnett's electorate, but it is actually the 'PartyVote' that I am campaigning for. On Sept 17th, a 'PartyVote' for the Greens is a vote for a Labour-led Green government. We want to be the 'heart and spine' of Labour and to work towards energy efficiency, protecting endangered species, universal student allowance, universal child benefit, an inclusive society and ending child poverty. The Greens have a proactive and preventative approach with practical solutions such as home energy efficiency rating system, free annual wellness checks, free fruit in primary schools, supporting local businesses and superannuation that is not asset-tested. We feel strongly that increasing the minimum wage to \$12 an hour, ensuring people's homes are insulated so they are healthy and warm, targeting healthcare for groups that need it most, providing more funding for Maori health services and making the first \$5000 of income tax-free are all steps toward a more just community.

New Zealand's economy is based on tourism, oil and water is essentially dependant on the environment. Our proposed 'eco tax' shifts the tax off work and enterprise

and onto waste, pollution and scarce resources and will help to fund many of our policies. That is why it is so important to plan for the future and to "Keep it Clean, Party Vote Green!"

I will be at Avebury House on Thursday 8th of September. Please join me for morning tea at 10am where I would be happy to chat and answer questions that you may have. Alternatively please ring 385-6306 or e-mail: natalie.cutler-welsh@greens.org.nz Other upcoming speaking events are listed below, everyone welcome to come along.

Natalie's Upcoming Speaking Events:

- | | | |
|-----------------|-------------------|--|
| Tues 6th Sept | 7:30pm | ChCh Central Panel at Cathedral Church |
| Wed 7th Sept | 7:30pm | 'Adult Education' at WEA, Gloucester Street. |
| Thurs 8th Sept | 11:30am | Natalie interviewed for 'Women on Air' |
| Thurs 8th Sept | 7:30pm | Ch Ch Central Meet the Candidates at Linwood Community Arts Centre. |
| Sat 10th Sept | 1:30pm | Meet the Party- New Migrants. |
| Tues 13th Sept | 7:30-9:30pm | Newstalk ZB Ch Ch Central Political Panel at Richmond Workingmen's Club. |
| Thurs 15th Sept | 8pm | Newstalk ZB, interview at Merivale Mall |
| Sat 17th Sept | PARTY VOTE GREEN! | |

Richmond History

Rural Section 182 was situated in the north eastern part of Richmond surrounding the domain. This area of fifty acres was purchased for £150 by Charles Dudley of Lyttelton, in 1853 Dudley sold some of his land to a gentleman named Minchin for £400. I would mention that Medway St was once called Minchin's Lane. Minchin held this land for a number of years eventually selling to Mr Gardiner for £600.

Gardiner built the homestead named "Woodchester" where the Presbyterian Home for the aged is now. Gardiner's land was eventually owned by Bannerman, Bailey, Trent and Sharpe in that order and finally the Presbyterian Church Property Trustees.

RICHMOND

WORKING MEN'S CLUB & M.S.A.

P.O.Box
26-036
Christchurch



Phone
389-5778

www.rwmc.co.nz

**WE ARE PROUD TO
SUPPORT OUR COMMUNITY**

**Heritage Week 2005 7th – 14th
October
Theme – ‘Restoration-Hands on
Heritage’**

**Open Days at Avebury House
9 Eveleyn Couzins Ave
(off North Avon Road)**

**Saturday 8th and Wednesday 12th October
from 10am to 4pm.**

- ❖ Craft demonstrations.
- ❖ Tours of the house and displays of old photos etc
- ❖ Devonshire teas for gold coin donation
- ❖ Ikebana floral art demonstrations

Saturday only

- ❖ Free horse and carriage rides 11.30am – 2p.m. with Rosemont horses and carriages.



Editors comment

Following up Margaret's request for a computer in the November 04 issue, she was touched by the care shown by the community in response to her letter and contacted Molten Media who supplied a computer and printer for which she was very grateful. Unfortunately the computer is very old and she keeps losing her work. Could anybody suggest a remedy to her problem? if so please phone her direct on 389-3810 or alternatively RCN on 381-6615

The Editor.

Richmond Creche

In September this year "The Richmond Village Community Creche" on the corner of London and Pavitt Streets, celebrates its 20 year anniversary and would like to invite any ex teachers, ex pupils and or family members to attend its celebrations. The Creche is having an open morning and luncheon BBQ on Wednesday September 28th from 10am - 1pm

Originally created by Mothers, who saw the need for good childcare, we have a maximum of 12 children per 3-hour session, providing high quality care at a low cost.

We are a multi-cultural Creche and have pupils from Australia, Thailand, Somalia to name a few.

Our two valued teachers have been with the creche for over 12 years and help provide wonderful care for children aged 2 through to 6 years of age.

We are a happy relaxed Creche and enjoy our work within the Richmond Community.

Should you be interested in attending our celebrations please phone our Creche on 381-1764 and leave your postal and or phone details.

Looking forward to seeing you.

BoomTimes for the Richmond WMC

The late 1960's were boom days....of apparently endless record turnover and profit....when handy properties could easily be bought and turned into club car parking.... when membership soared upwards....when ambitious building projects surfaced regularly....when bigger and bigger numbers turned up at annual meetings to hear the continuing good news.

At the 1966 annual meeting, Ron Grant reported a record turnover of £125,548/2/4 which yielded a £12,240/9/5 profit (up from £9436/11/7) for the 1965-66 year. But had all accounts been squared, the club would have been £13,500 in the red.

In 1971, more than 400 members heard of another record turnover (up \$56,129 to \$356,535) despite rising wages and staff increases. In 1972 again a record turnover, and a gross profit of \$132,585 despite a \$9000 increase in wages.

**"Its your home-
you only get
one chance
to get best market value.
Let my 27 years active real
estate experience work for you".**



Phone 355-6444 or 0274 344234

E-MAIL

corneliusrealty@xtra.co.nz

Cranford / Innes Corner

Local resident Local knowledge

Bill Cornelius
REALTY LTD MREINZ

Blacksmiths

There were two "smithies" in Stanmore Road before World War II. Jefcote's on the corner of Alexandra Street was a large wooden shed painted red and Dave Harries', which stood where "Chicago" is now. This building had a brick facade and was larger than the other smithy. The Harries family lived next door in a house which had front windows of obscure glass because it fronted straight onto the street without a garden, lawn or fence. Behind the forge was a yard dominated by a large walnut tree and full of bits of farm machinery. Farmers and market gardeners from Burwood and Marshlands would come by horse and cart, leave the horse to be shod and go into the city by tram or later, bus. Dave Harries forge was a favourite place for local boys to go and watch the glowing forge and the horses being shod. But woe betide any boy who ventured inside; he would be told to go away in language not spoken in polite circles.

Ted Harrall

Closing Date for copy and advts. for the October issue is September 20th

Deliverers Urgently Required

If you could help out by delivering the R. C. N. we would love to hear from you. Ph Phill on 381-6615

Richmond Computer Net

Low Cost

Public Internet Access

for \$1 donation per half hour

Help and Tuition provided by volunteers available at:

Avebury House

9 Eveleyn Couzins Avenue

11am - 3pm Daily

weekends by arrangement

- Six computers with fast Internet access
- Help with computer problems
- Help with e-mail and internet
- Informal 1:1 tuition
- Laser printer
- C D burner available on request (enquire at office)

For further information phone 381-6615



John Rhind Funeral Directors

Part of the Richmond Community since 1881

Operating from our original site in London Street for over 120 years, John Rhind Funeral Directors today offer a modern chapel and homely catering lounge, and a team of caring professionals, including an after-care bereavement support person.

J • O • H • N
RHIND

FUNERAL DIRECTORS
Since 1881 ... a continuing family tradition

Phone
379-9920
24 hour assistance

John Rhind Funeral Directors,
19 London Street, Christchurch.
Fax (03) 366-7488



My Commitment to You

One of the most enjoyable parts of being on the campaign trail for me is conducting street corner meetings with my team of volunteers. Whilst I receive many varied requests for assistance and advice through my electorate office and have the opportunity to meet many residents with diverse issues, I really enjoy the opportunity of meeting local residents on their own local street corners. During the last two elections I have spoken on hundreds of street corners. This year I'm proud to be back again, visiting a street corner near you. I'm also proud to say that after six years of a Labour-led government New Zealand is a stronger, more confident, better place to be. And I am glad to report that is generally the type of feedback I am getting at my street corner meetings.

In my soapbox address I talk about the fundamental differences between the Labour led Government of today and of a National led Government of the yesteryear; where their policies did their best to undermine the basic building blocks of our society – public health, public education and state superannuation. I talk to residents about the key promises Labour put on pledge cards in the last two elections. Seven promises each time, and each time we have delivered on those promises. After six years in government some political parties have reached the end of their journey. Not us! Labour is just moving into fourth gear. No one would accuse Helen Clark of running out of steam.

For nine years I have represented you in Richmond and Christchurch Central in Parliament. The job is exciting and my commitment to our city, total. I have tackled difficult issues to the best of my ability. I commit to carrying on being an involved, accessible representative for you in Parliament and the city.

Tim Barnett
M P for
Christchurch Central

TIM BARNETT

**Christchurch
Central's
Member of
Parliament**

NEW ZEALAND
Labour



Level 3, 103 Worcester Street, PO Box 13 295, Christchurch
Phone: 03 377 8840 Fax: 03 366 4770 Cell: 0274 570 809
E Mail: tim@timbarnett.org.nz Internet: www.timbarnett.org.nz



THE RICHMOND MISSION OF CHRISTCHURCH

For more than fifty years the Richmond Mission was lead by Mr David and Florence Smith (the founders), on the corner of Petrie and North Avon Road. It was established in 1911 and ran until 1984.

The Smiths encouraged by the Bible verse: (Zacchariah 11:17) "Woe to the idle shepherd that leaveth the flock!" soon had their focus on helping others.

Gospel and teaching meetings began in their home and soon numbers grew which lead moving the meeting to Linwood Library. Eventually after another move, as numbers kept increasing, Mrs Smith eyed an empty swampy acre on the corner of Petrie and North Avon roads as the next meeting venue. She said, "My heart goes out to that lonely place." The land was purchased and a new hall erected by Ted Healey.

The Richmond Mission was on its permanent site. The Mission truly outreached to others with:

- Visiting the prisons.
- Teaching the Bible to prisoners.
- Looking after prisoners families.
- Elim House (a trust) provided a home for former prisoners when they came out of jail.
- Powerful preaching and instruction by both the Smiths. However from 1919 (as a result of Mr Smith having a journey) Mrs Smith became the main preacher.

In its 73 years of operating an offering was never taken. Collection each month from the 1940's onwards was a gift for missionary work; this never did pay for the Richmond Mission's expenses.

The mission never claimed to be a church - there are no records kept prior to 1964. All were welcomed.

The original building was replaced in 1952 and it became clear that by 1984 that the mission's days were complete. The Baptist Union were gifted the Richmond Mission Trust and so began the North Avon Baptist Church.

Many people have given thanks to the Smiths, for their dedication, the spreading of God's word and for the direction their own lives have taken.

The Richmond Mission's motto was "God First"

Jennifer Pope



Kia Ora,

Well we started our swimming programme at Aquagym this week and what an amazing job the tutors do there. In just two lessons children are confidently floating in the water and all heads under! We would like to thank the following people for their generous donations to support this invaluable programme :

Tom and Yvonne Mc Brearty,
Mr O Taylor,
Frances Ogier,
The Mayors Welfare Fund
The Board of Trustees.

Your generous support has made a real difference for our children. A big thank you to Averbury House newsletter, the **Richmond Community News** for supporting us in getting sponsorship. We would also like to thank the lovely Grandfather and Grandmother who have volunteered to work three sessions a week helping children to learn to read. These two people are doing a marvellous job and our children are so excited about them coming and helping. If you would like to lend a hand then please ring the office.

We had a marvellous night with Richmond Idol and had over a hundred whanau and community members attend. The children and caregivers certainly shared their talent with us all. Our next community night is the International dinner followed by the wearable arts awards which are on 15 September at 6.00pm, so please come down and support the evening. The International pot luck dinner is always highly successful and one we look forward to each year.

KM BUSINESS

We would like to thank KM Business and Kyocera for donating a wonderful digital camera to our school. It is awesome to see local business supporting our tamariki.

FOR SALE

Second hand children's school tables and chairs. Please call in and speak with Tania in the office or phone 3897 168. Price negotiable and very reasonable.

NEW ZEALAND RUGBY UNION

We would like to thank the above association for winning a signed training jersey by the All Blacks. We will be using the jersey as a special fundraiser in the near future.

FRIENDS AND FAMILY

ACADEMY PUBLISHING

We would like to thank Academy Publishing and the following sponsors who have sponsored a free homework book for each child in the school.

<i>The Bakery</i>	<i>390 Ferry Road</i>
<i>The Mad Butcher</i>	<i>202 Hills Road</i>
<i>Bartlett Electrical</i>	<i>128 Winters Road</i>
<i>Reading Cinema</i>	<i>The Palms</i>
<i>Shirley Motors</i>	<i>27 Avalon Street</i>
<i>Bowden & Trent</i>	<i>26 Moorhouse Ave</i>
<i>Richmond Drycleaners</i>	<i>71 North Avon</i>
<i>Aquagym</i>	<i>459 Cashel St</i>
<i>Mantra</i>	<i>72-74 North Avon</i>

Peter Thompson

John Rhind

49 Warrington St

13-19 London St

Once again a huge thanks to all our sponsors who have given so generously. Only a few weeks left this term and then we need to start thinking about Christmas!

Best wishes

Annie Bowden

Principal



Junior swimmers



Indian girls

The HARCOURTS advantage

Buying ~ Selling ~ Advice



Alan Williamson
Local Resident
Local Knowledge

Harcourts Grenadier Real Estate
MREINZ
191 Woodham Road

381-2361 / 027 201-9704