

Richmond Community News

•October 2005 •

Vol 3 No 9 Issue30

Forteenth in the series of historic Richmond homes



AVEBURY HOUSE

AveburyHouse, the home of The Richmond Community News, is now celebrating its third birthday.

As Heretage Week is with us (7th - 14th October) and this is a Heritage House, what better time to refresh your memory or just introduce you to this lovely house and garden!

The large two-story house at 9 Eveleyn Couzins Ave., off North Avon Rd remains much as it was when built in 1885 and now run by a Board of Trustees on behalf of the Community.

Rooms are available for hire and many groups have meetings and seminars. It is also a popular venue for weddings and birthdays. We have a small room with local archives and a computer suite available to the public(y)

The house was designed by James Glanville and was built for William Flesher who died just four years after the house was finished (1865 - 1889). He was followed by his son James. James who married Margaret Deakin, was a barrister and solicitor. He was very active in the community and was Mayor of New Brighton and later a City Councillor and Mayor of Christchurch from 1923 - 25. Hubert, his son followed in his footsteps and was also a lawyer.

In1945 the house was sold to the Crown and later given to the Christchurch City Council for recreational use. The house was used by the Plunket Society and the gardeners of the park until the 1960's when it became a Youth Hostel

until 1997.

The house was threatened with demolition but was saved by the Richmond Community and Hagley/Ferrymead Community Board, suitably funded by the Christchurch City Council.

Avebury House is open weekdays 10 - 4pm, other times by arrangement but on Saturday the 8th October and Wednesday the 12th October during Heritage Week, there will be tours of the house, devonshire teas, special displays and Ikebana and embroidery demonstrations. Also thr Richmond History Room will be open.

On Saturday October 8th 11:30am - 2pm there will be FREE horse and carriage rides.

We look forward to seeing you.

Avebury House and Richmond History Group
Volunteers.



Richmond



Ph 381-5980

★ **5%**

**Discount to
Pensioners every
Tuesday**

★ **Conditions
Apply**

**Stock excluded are :
Tobacco - Instore specials**



CORPORATE
print©

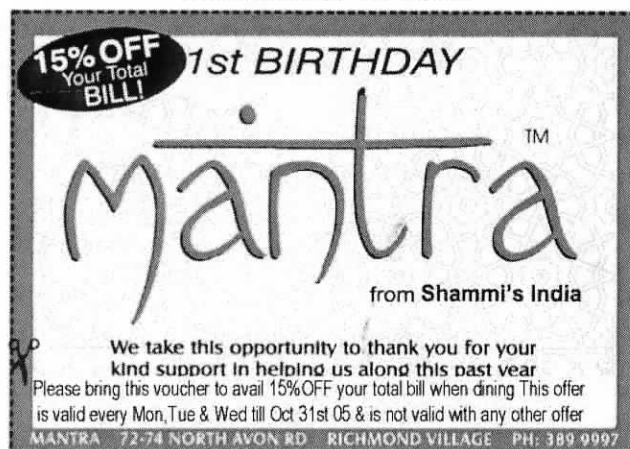
Cnr Moorhouse Avenue & Gasson Street P.O. Box 7232 Christchurch
Telephone 03-365 5179 Fax 03-365 1286 www.printandcopy.co.nz

MANTRA

Mantra opened in September 2004. Shammi Sandhu, proprietor says, "We saw a good opportunity in the suburb of Richmond and realised it would be a good location for the community to have an excellent Indian restaurant in their midst. The community has been very supportive and in appreciation Mantra celebrated its first birthday where many of our customers were invited to share an informal evening of drinks and nibbles. It was a wonderful evening for all to share. We are very satisfied with this location and are creating a wonderful and loyal following here. It is about building long term relationships and friendships and our greatest tool has been word of mouth. We now find a lot of people are coming from all over to dine with us." Shammi Sandhu has been in the restaurant business for 12 years in Queenstown. The years have been filled with many challenges. She absolutely loves the food business and is very grateful for the opportunities.

Shammi says "We devote ourselves fully to making each dining experience at Mantra special one". Mantra offers dining in a warm ambience and is getting popular for special functions, birthdays, anniversaries and special occasions. Takaways are also available.

MANTRA 72-74 NORTH AVON ROAD
RICHMOND VILLAGE



Last month's solution



The solution to
this month's crossword
will appear in
next month's newsletter

Crossword

CLUES

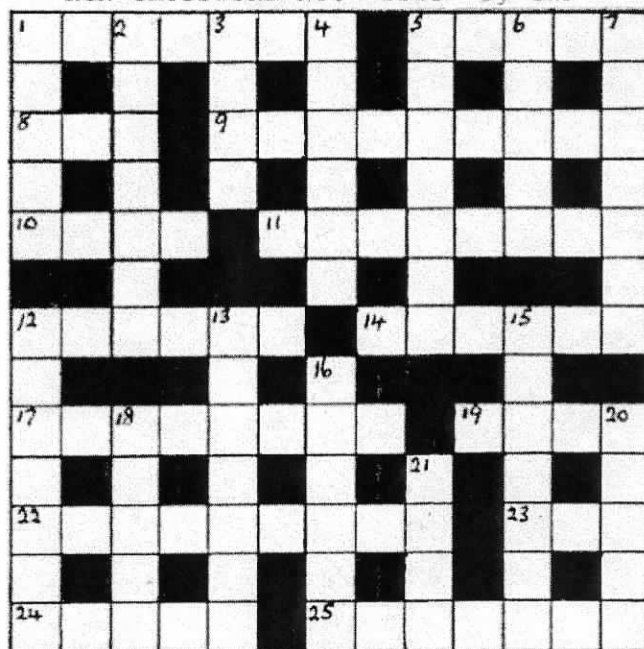
ACROSS

1. Non-believer (7)
5. Musical work (5)
8. Abrade (3)
9. Too highly assessed (9)
10. Instrument (4)
11. Shorten (8)
12. Provides (6)
14. Emergency (6)
17. Highest teen age (8)
19. Interrogate (4)
22. Group of musicians (9)
23. Devotee (3)
24. Regale (5)
25. Ruler (7)

DOWN

1. Month (5)
2. Natural home (7)
3. Metal (4)
4. Idea (6)
5. Seaman (7)
6. Four (prefix) (5)
7. Haydrying machines (7)
12. Fraternize (7)
13. Place of seclusion (7)
15. Be evasive (7)
16. Colonize (6)
18. Mother-of-pearl (5)
20. Regions (5)
21. Ram down (4)

RCN CROSSWORD No. 1323 by GWP



SUN NING TAKEAWAYS

273 Stanmore Road Telephone 389-3113

CHINESE MEALS ~ FISH & CHIPS
HAMBURGERS

HOURS

Tues -Wed: 11.30 am - 2pm/4.30pm - 8.30pm
Thurs - Sat: 11.30am - 2pm/4.30pm - 10pm
Sun: 4.30pm - 8,30pm Mon Closed

PHONE ORDERS TAKEN
SMALL FUNCTIONS CATERED FOR
SUPPORT YOUR LOCAL
RICHMOND BUSINESSES

What's on in October

Avebury House, situated at 9 Eveleyn Couzins Ave. Richmond, is a community-run, low cost facility which has rooms available for hire.

Situated in the midst of Avebury Park, the house, which has been refurbished, has run several open days and social events.

In addition to the amenities for hire, the following classes and activities are available:

Gentle Exercise Class - Mondays 1- 2p.m
(wear comfortable clothing) Cost \$2.50

This Sit and Be Fit class is a fun and healthy way to retain mobility, independence and meet new people. Designed especially for those with limited mobility, older adults and those with health or weight problems. Enjoy these simple and gentle classes at your pace, and enjoy a cup of tea with us afterwards.

Richmond History Group

Held on 2nd Wednesday of each month. No cost.

Next meeting Wednesday 13th October 4 - 5pm

History Group meets to share resources and research items of Richmond's heritage. The Richmond Room, a resource room with displays, magazines and items of interest Has been set up at Avebury. These resources are available to the public at no charge.

Embroidery Group

Thursdays 10am - 12 noon

Beginners to advanced. Tuition available from a patient, experienced tutor.

Please ring Allison on 388-9377 for more information

Shirley Brownie group

Meets at 6pm every Tuesday at Avebury House. Contact Kim on 366-5434 for details

Music & Movement for Babies & Preschoolers

This popular group meets on Wednesdays 10.15 - 10.45 from the 19th October - 7th December 2005 Cost \$3 per family

For enrollment/enquiries ring Ursula on 332-0633

Flax Weaving Courses with Ali Brown

Oct 15 10am - 4pm. For further information and bookings Ph 329-7051 Ali Brown

For further information about facilities and classes etc. please contact:

Lesley McMillan

Community Development Worker

Ph 381-6615

Did you know ?

That cinnamon contains a natural chemical that mimics insulin and reduces blood sugar? Try it with banana on toast for a lovely breakfast.

The editor

Richmond Computer Net

Low Cost

Public Internet Access

for \$1 donation per half hour

Help and Tuition provided by volunteers
available at:

Avebury House

9 Eveleyn Couzins Avenue

11am - 3pm Daily

weekends by arrangement

- Six computers with fast Internet access
- Help with computer problems
- Help with e-mail and internet
- Informal 1:1 tuition
- Laser printer
- C D burner available on request (enquire at office)

For further information phone 381-6615

Self employed couple, early 40's available to house-sit. We will look after your house, garden and pets as if they were our own.

Excellent references.

Phone 355-8018

Advt

STRIKE A HAPPY MEDIUM!

My professional fee is more than 1%
but less than 4%.

More importantly though, is getting you
the best possible result through astute
switched on marketing and strong
negotiation.

Successfully selling in Richmond/Avonside
Phone me for a no obligation appraisal



Kevin Moore

Residential Property
Marketing

J Butler Realty Ltd

Ph 354-0014 (24hrs)

or 027 201 4260

Email kevin@moorerresults.net.nz



Donated Light Fittings

Pictured below are the two beautiful Edwardian light fittings kindly donated to Avebury House.

The three light was donated by Beatrice Cheer and through her kind hearted generosity The Lighting firm, Recollections Christchurch, decided to match her generous gift by donating the five light.

Avebury House Community Trust is extremely grateful to both Beatrice and Recollections Christchurch for their gifts and invite everybody to call and see them for themselves.

The light fittings will be best seen during our Heritage Week open days on October 8th and 12th



Kindly donated by **Beatrice Cheer**



Kindly donated by **Recollections Christchurch**

RICHMOND
WORKING MEN'S CLUB & M.S.A.

P.O.Box

26-036

Christchurch



Phone

389-5778

www.rwmc.co.nz

**WE ARE PROUD TO
SUPPORT OUR COMMUNITY**

BOWLS

The persistence of 20 to 30 Christchurch Workingmen's Club members playing at Nunn's indoor rink at Tatterstalls Lane provided the foundation of the Christchurch-Richmond M.S.A Bowling Club. Their efforts were recognised in 1944 when their parent body accepted bowls as a sub-section. After the RSA Bowling Club and the Richmond Workingmen's Club had said no, the Christchurch club grabbed the £400 offer of a bowling green laid in Petrie Park by the Christchurch City Council. The immediate necessity was a clubhouse with tea making facilities. Members of the new club built a wooden structure and added two army huts.

B.H. Jones and J. Mikkenson revived the idea of a bowling section in the Richmond club in 1952, outlining a proposal costing about £200 which would be repaid in two years. The executive approached Christchurch's bowling section about Richmond members but while it was agreed this could happen in time, the Richmondites favoured doing their own thing and decided to take advantage of the first offer of ground.

Nothing happened until 1958 when about 40 Richmond members approved a scheme to raise about £600 for a bowling green. A section was available near the Shirley green and the project would take about five years. By this time about 60 Richmond and 40 Christchurch players were in the Christchurch WMC club based on the Petrie St green. However, joint ownership was not acceptable to Christchurch and the Richmond executive could not reach a decision. Only seven people bothered to turn up to a meeting about forming a bowling club. So the status quo remained but by the late '60s, the asset had been built up for the Christchurch Workingmen's Club was the cause of irritation among Richmond Workingmen's club members who made up more than three-quarters of the membership. Fifty-fifty amalgamation was suggested, but it took two years of contentious arguments before the parent bodies reached agreement.



Garden City Symphony Orchertra

Including the 'Neerlandia Choir'

with pieces by Elgar, Bizet and Mozart

being held at Cashmere High School Auditorium

October 28th 2005

Starting at 7:30 pm

Cost \$5.00 for Adults and \$2.00 children.

**Heritage Week 2005 7th – 14th
October
Theme – ‘Restoration-Hands on
Heritage’**

**Open Days at Avebury House
9 Eveleyn Couzins Ave
(off North Avon Road)**

**Saturday 8th and Wednesday 12th October
from 10am to 4pm.**

- ❖ Craft demonstrations.
- ❖ Tours of the house and displays of old photos etc
- ❖ Devonshire teas for gold coin donation
- ❖ Ikebana floral art demonstrations

Saturday only

- ❖ Free horse and carriage rides 11.30am – 2p.m. with Rosemont horses and carriages.



North Avon Road

70 years ago there was no Resource Management Act and no division of the city into zones. It was not unusual for tradesmen to have workshops in their backyards. On the corner of Stapletons Road and North Avon Road was Sheridan (later Eric McPherson) the butcher. Next door lived the Cusack's then Pentecost the car painter with DUCO signs on his large workshop.

On the west corner of Petrie Street was W Ramsay, plumber, with a workshop opening on to Petrie Street. On the opposite corner, next to the Richmond Mission the Misses Church had their haberdashery shop. Next to the Mission was a slight rise on which stood an early cottage occupied by the Lawson family and the corner of Chrystal Street was a fruiterer that had a history of changing owners. The present two shops were owned and occupied by Mr & Mrs Fred Beere who lived in the house behind the corner premises which was Fred's fish shop; Mrs Beere kept what is now the dairy but was then a fruit and sweet shop. On the corner of North Parade was a vacant shop.

Ted Harral

Do you want to learn to write?

Try something new at Avebury House

You too can improve your writing - or be given the skills - to start a book of memories which will be a priceless gift for your descendants and have great fun in the process!

If you would like to be able to write stories about your life, your travels, family, schooling, a special person, place or any other topic, this six-week course is right for you.

Heather Hapeta, a local writer, is taking advanced bookings for this limited-number group. Given enough interest, both day and night sessions will be held in February 2006. (One 2-hour session each week).

Ring now to ensure your place.

Phone Heather Ph 942-1253

Stanmore Road

AUTO SPARES

(formerly Super Cheap Auto Spares Ltd)

245 Stanmore Road
Richmond
Christchurch

Ph 03 389 4555
Fax 03 389 4213

For a Complete Range of Automotive Parts at Competitive Prices

**"Its your home-
you only get
one chance
to get best market value.
Let my 27 years active real
estate experience work for you".**

Phone 355-6444 or 0274 344234

E-MAIL
corneliusrealty@xtra.co.nz
Cranford / Innes Corner

Local resident Local knowledge

Bill Cornelius
REALTY LTD MREINZ

Delta Trust's 10th Anniversary Celebrations

The Delta Community Support Trust was set up in 1995 by the North Avon Baptist Church to support and empower the disadvantaged families of Richmond and the surrounding areas.

Over the years their services have extended city - wide with courses and groups teaching goal setting, socialising people with intellectual disabilities, supporting different cultural groups and older persons.

Delta has always worked hard at creating a safe and healthy community where people, often in crisis, are accepted, respected and empowered to reach their potential.

Last year we opened the 'Footprints Cafe' which is open to anyone Monday to Thursday 10 am - 1 pm serving light meals and tea and coffee at minimal cost.

On Monday 31st October we will celebrate our first decade of service in Richmond and beyond at the Delta Community House at 105 North Avon Rd.

You are all very welcome to join us on this special occasion, beginning at 11 am with official addresses by Carole Evans, Deputy Mayor of Christchurch, Tim Barnett, our local M.P. and Yvonne Palmer, Chairperson of the Shirley-Papanui Community Board. Light refreshments will be served.

The Delta Trust is also celebrating Neighbourhood Week on this day by extending an invitation to you all to join us for a special Afternoon Tea from 3pm to 5pm.

This is a great chance to meet your neighbours, discuss what's happening in your community and to observe the work that the Delta Trust is involved in in Richmond.

We are very grateful for your support and

participation over the years and remain thankful in the name of God in what has been achieved in people's lives.

We are looking forward to the next decade with great anticipation as we continue to develop our services in our wonderful new facility at the Delta Community House.

BULLS EYE

The rifle section of the RWMC was given approval to go ahead with a rifle range on the club section. Materials were estimated at £250 and a working bee would provide labour. Legal opinion suggested that neighbours could not prevent erection of the range but could seek an injunction to stop its use if it could be proved a nuisance. In April 1951, the Christchurch City Council advised that neighbours permission was needed to build a rifle range on the boundary. After further discussion, the neighbours agreed - provided the executive guaranteed to curb any unreasonable noise. The range was completed by the following April at a cost of £905. Members' sons over 16 were allowed to join the section from 1953 and at the start of 1969, Shirley Boys' High School was given the range for practice. The great hare and goose drives of the late '50s and early '60s helped swell section numbers. Ron Tabley organised busloads of shooters for hare drives, usually to the Broken River, Castle Hill or Glentui areas where farmers welcomed anything likely to reduce rabbit and hare numbers.

"Footprint Cafe"

105 NORTH AVON RD NOW OPEN

Hours 10 am - 2 pm Mon - Thurs

Coffee, Tea and Food

Are you looking to move? Do you want to buy?

Do you want to buy your first home?
Is your home too small that you need to find a bigger one?
Are you are looking for an investment property?
Is your current home just too big that you want to downsize?

If you have said **yes** to any of the questions above, you will need a good property consultant.

**LOOK NO FURTHER. CALL ME TODAY FOR
LOCAL HONEST ADVICE.**



Gary Hughes

Property Consultant

Telephone 03-381-2361

After Hours 03-386-1370

Mobile 0275-630-994

Fax 03-389-7749 email: gary.hughes@harcourts.co.nz www.harcourts.co.nz

191 Woodham Road, Avonside, Christchurch, New Zealand DX WP28007, Shirley



*I am committed to creating value for my clients by building strong relationships,
providing quality advice and delivering an excellent service*

apost

What does your local MP Tim Barnett, actually do for you? Here is my experience!

I like most people who reside in Christchurch live the life of Joe Average Citizen going to work, playing sport and paying taxes. National politics raise interest only around election times when new empty promises are put to the people in the hope of your tick in their box. Driving past a shiny poster, with a name and a face and comment, Oh, so that s who our local M.P. is! It s not apathy, it s not ignorance, it s just the way it is. Occasionally we may see their picture or their name appear in an article in the newspaper and question what good is it they actually do for us?

Recently I found myself in a less than desirable situation and the need to leave a country quickly. Due to an airline strike, I was told the first plane I could get out was almost a month away. I did have the option of buying a new one way ticket with a different airline which of-course would have worked out very expensive. I needed help.

My first port of call was the New Zealand Embassy in their security controlled, air conditioned offices inside a sky scrapper in the high rent area of a foreign city. My request for assistance was for them to contact Air New Zealand and use their status as the people s representative to plead my case. To me it seemed relatively simple, my airline ticket was with a Star Alliance member as is Air New Zealand. With a plea from the Embassy to Our Airline surely they could arrange for the ticket to be transferred. Unfortunately the Embassy representative wasn t interested in me or my plight.

My next step was to contact Air New Zealand directly via e-mail and as I sit safely back in my living room a month later, I am still waiting for a reply from them. At the same time I searched the internet for the contact details of my local Member of Parliament and copied the same e-mail to him also. I did this at 1am (my local time) and by 9am that same morning I had received an email from my Member of Parliament, one from his assistant and also a call to my mobile phone expressing great concern and desire to help. Over the next few days they exhausted all avenues available regarding the possibility of helping me and kept in contact offering support.

Two weeks and much frustration later I was transferred to another airline (non Star Alliance) and made it home to Christchurch. This experience made it very clear to me who was there to help one of their citizens. Surprisingly, it wasn t the New Zealand Embassy who showed concern but lack of desire to offer anything beyond the air conditioned sanctity of their corporate office. No surprise but it also wasn t the multi national corporation who weren t willing to even entertain the idea of helping a New Zealand individual despite their television advertisements suggesting otherwise. It was the local MP who went above and beyond and helped one of their constituents who was stuck miles off shore.

Cynical people may well suggest that in an election year politicians will do anything for your vote but this was a lot of effort for one vote. There was no high profile opportunity involved with this, no pictures or articles in the paper, it was simply your local MP helping one of his people. This experience has really made me think about how much more it is that your local MP does for you that is not reported in the mass media.

Contributed by A. Kelly, Christchurch Central
Constituent for

Tim Barnett

Member of Parliament

Christchurch Central Electorate

Work Wanted

Female seeking P/T work in small bakery/kitchen/
cafe. Past experience with dishes and cleaning.

Ph: 365-8267

Advt

**Closing Date for copy and advts. for the
November issue is October 18th**

TIM BARNETT

**Christchurch
Central's
Member of
Parliament**

NEW ZEALAND
Labour



Level 3, 103 Worcester Street, PO Box 13 295, Christchurch
Phone: 03 377 8840 Fax: 03 366 4770 Cell: 0274 570 809
E Mail: tim@timbarnett.org.nz Internet: www.timbarnett.org.nz



Kia Ora,

Welcome to a very interesting last week of term!!! The weather on Monday certainly was a reminder it is not yet summer. We have some awesome pictures of the event.

ETIME DIGITAL LEARNING

We had some marvellous news about our five children being accepted for Etime Learning next term. The five children will be learning through ICT (Information, Communication, Technology) one day a week. The children who won the scholarship were:

Tara
Sefryn
Mitchell
Cassandra
Sonya

Exciting learning opportunities! We have just learned that we are able to send another three children to join our five that have already been accepted. Wonderful news. Once again a huge thanks to Etime Learning who are based at the top end of Armagh Street for giving our tamariki this opportunity.

KORU CARE

We were also successful in gaining another place for one of our tamariki to go to Disneyland with Koru Care. We are in the process of choosing a child. This is our sixth year we have sent a child to Disneyland and it is such a wonderful and precious opportunity for our tamariki. Thank you to Koru Care for giving us this opportunity and especially to my sister Pauline who nominated our school for an annual placement. Thank you.

CHRISTCHURCH COLLEGE OF EDUCATION

We have Christchurch College of Education students in our Kura for eight weeks working with a group of five tamariki to support their reading. We also have five University students in the school working with a senior class regarding issues of diversity and power relationships in a school setting. Very interesting indeed.

INTERNATIONAL DINNER

Once again we had a very successful turn out for both our annual International Dinner and Wearable Arts Parade. As you can see from the pictures we had a wonderful night. Thank you to all the tamariki

who took part in this event and for all their hard work, it has certainly paid off.

LEADERSHIP TRIP TO WELLINGTON

This year some of our year six children will be travelling to Wellington in week 2 as part of a Leadership experience they have worked towards from the beginning of the year. They have worked hard through various fundraisers including sausage sizzles, movies, car washes, chocolates and many other activities during the year. A huge thanks to Janet Ackerley who co-ordinates this event and is also the Room 6 teacher.

FOR SALE

Second hand children's school tables and chairs. Please call in and speak with Tania in the office or phone 3897 168. Price negotiable and very reasonable.

Best wishes

Annie Bowden
Principal



Grace



Rm 2 in snow

Disclaimer

Views and opinions expressed in Richmond Community News are not necessarily those of the Editor or Avebury House Community Trust. No responsibility is accepted for incorrect information contained in advertisements or editorials. Advertisements for publication are accepted in good faith and publication of an advertisement does not imply endorsement by Avebury House Community Trust. The Richmond Community News is published monthly by Avebury House Community Trust, 9 Eveleyn Cousins Ave, Richmond Christchurch. Telephone 381-6615 or E-Mail avebury@extra.co.nz.