

# Richmond Community News

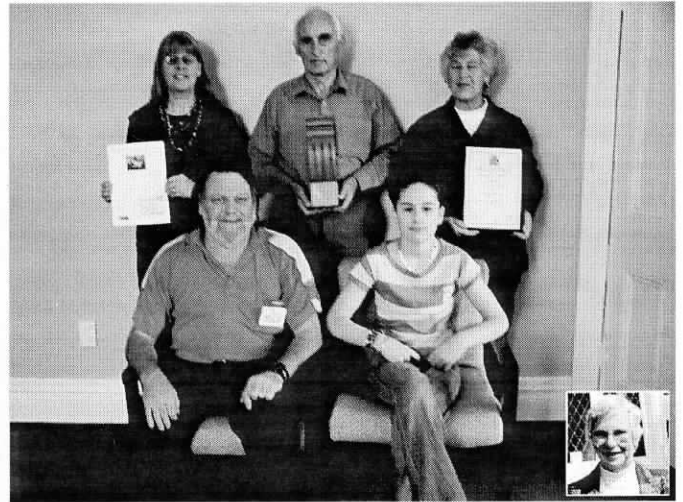
• November 2005 •

Vol 3 No 10 Issue 31

The series of historic Richmond homes will continue next month



Above L to R: Phil Hoare, Anna Crighton, Lesley McMillan



Above Rear: Jennifer Pope, Ted Harrall, Noline Hansen  
Above Front: Phill Hoare, Alexandria Pope  
Inset: Shona Ward.

The Editorial/ History/Heritage Team

## Richmond Community News Wins Heritage Award

To the delight of the Editor and members of the History Group, the Avebury House Community Trust and the Richmond Community News won the Education and Awareness section of the 2005 Hagley/Ferrymead - Christchurch Star Heritage Awards held on October 14 th. Over the past fourteen months we have run a series of articles and photos of historic homes in the Richmond area initiated by a first article about the demise of 16 Warwick Street. The response to these articles has been such that we will continue to print such articles and if you have anything to contribute, we are always on the lookout for items and homes of historic interest.

The Heritage Room is open to the public daily from

10 am - 3 pm. Anybody wishing to view the award or the memorabilia and photos on display is welcome to do so.

The History Group is always looking for items/photos of historic significance. If you have something and are willing to share it with us, please phone Avebury House 381-6615

### Harcourts

GRENADIER REAL ESTATE LTD  
191 Woodham Road, Avonside

If you are looking for local honest advice  
and want to buy or sell a home

**Look no further - Call me today**



**Gary Hughes**

Property Consultant

Telephone 03-381-2361

After Hours 03-386-1370

Mobile 0275-630-994

email: gary.hughes@harcourts.co.nz

## What's happening at the empty site in Gowerton Place?

You're invited to look at preliminary designs  
for a new Christchurch City Council housing  
complex and give us your feedback.

Where: the marquee at the end of Gowerton Place

When: Thursday 17 November

Pop in between 4.30 and 6.00pm



**CHRISTCHURCH**  
CITY COUNCIL - YOUR PEOPLE - YOUR CITY

CORPORATE  
**print&copy**

Cnr Moorhouse Avenue & Gasson Street P.O. Box 7232 Christchurch  
Telephone 03-365 5179 Fax 03-365 1286 [www.printandcopy.co.nz](http://www.printandcopy.co.nz)

COMING UP AT AVEBURY:

## Crossword

### CLUES

### FREE COMMUNITY CONCERT

#### AT AVEBURY PARK

9 Eveleyn Couzins Avenue, Richmond  
2pm – 4pm Saturday 3 December 2005

Bring along your afternoon tea and picnic in beautiful Avebury Park and enjoy a free concert from the Garden City Symphony Orchestra under the baton of Patrick Shepherd.

The programme will consist of light classical pieces, well known show tunes and Christmas Carols, Seating will be provided.

A Sausage Sizzle will be available from 12pm as well as a stall selling small Christmas gifts and decorations.

Come early, have lunch then stay for the concert.

For further details ring Avebury House on 381-6615

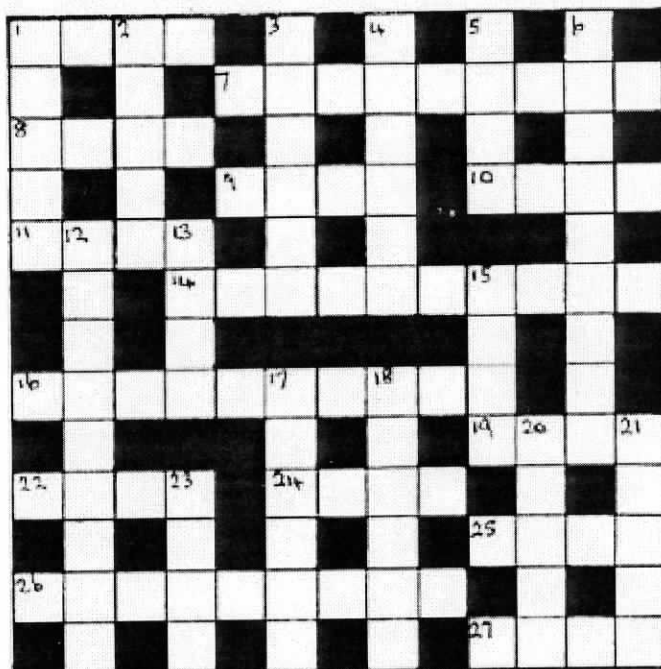
#### ACROSS

1. Flute-like instrument (4)
7. Announcement (9)
8. Greasy (4)
9. Capital of Peru (4)
10. Implement (4)
11. Stop (4)
14. Plans (10)
16. Purposeful (10)
19. Manner (4)
22. Roman emporer (4)
24. Shear (4)
25. Crooked (4)
26. Servant (9)
27. Fete (4)

#### DOWN

1. Streams (5)
2. Untrue (5)
3. Strait-laced (6)
4. Reach (6)
5. Issue (4)
6. Proclaimed (9)
12. Apartments (9)
13. Small car (4)
15. Article (4)
17. Put into cipher (6)
18. Brings into line (6)
20. Musical drama (5)
21. More (5)
23. Unlock (4)

RGN CROSSWORD No. 1324 by GWP



### Last month's solution



The solution to this month's crossword will appear in next month's newsletter

## SUN NING TAKEAWAYS

273 Stanmore Road Telephone 389-3113

CHINESE MEALS ~ FISH & CHIPS  
HAMBURGERS

#### HOURS

Tues - Wed: 11.30 am - 2pm/4.30pm - 8.30pm

Thurs - Sat: 11.30am - 2pm/4.30pm - 10pm

Sun: 4.30pm - 8,30pm Mon Closed

PHONE ORDERS TAKEN  
SMALL FUNCTIONS CATERED FOR  
SUPPORT YOUR LOCAL  
RICHMOND BUSINESSES

## What's on in October

Avebury House, situated at 9 Eveleyn Couzins Ave. Richmond, is a community-run, low cost facility which has rooms available for hire.

Situated in the midst of Avebury Park, the house, which has been refurbished, has run several open days and social events.

In addition to the amenities for hire, the following classes and activities are available:

### Gentle Exercise Class - Mondays 1- 2p.m

(wear comfortable clothing) Cost \$2.50

This Sit and Be Fit class is a fun and healthy way to retain mobility, independence and meet new people. Designed especially for those with limited mobility, older adults and those with health or weight problems. Enjoy these simple and gentle classes at your pace, and enjoy a cup of tea with us afterwards.

### Richmond History Group

Held on 2<sup>nd</sup> Wednesday of each month. No cost.

Next meeting Wednesday 9th November 4 - 5pm

History Group meets to share resources and research items of Richmond's heritage. The Richmond Room, a resource room with displays, magazines and items of interest has been set up at Avebury. These resources are available to the public at no charge.

### Embroidery Group

Thursdays 10am - 12 noon

Beginners to advanced. Tuition available from a patient, experienced tutor.

Please ring Allison on 388-9377 for more information

### Shirley Brownie group

Meets at 6pm every Tuesday at Avebury House. Contact Kim on 366-5434 for details

### Music & Movement for Babies & Preschoolers

This popular group meets on Wednesdays 10.15 - 10.45 from the 19th October 7th December 2005 Cost \$3 per family

For enrollment/enquiries ring Ursula on 332-0633

### Flax Weaving Courses with Ali Brown

Nov 12th 10am - 4p m Ali Brown

**For further information about facilities and classes etc. please contact:**

**Lesley McMillan**

**Community Development Worker**

**Ph 381-6615**

---

## Information on The Kitson Tram

There is one which is fully restored and working at Ferrymead Heritage Park fondly known as "Kitty" by the Ferrymead Tramways Staff (and other interested people) plus a couple of also restored double decker carriages which people can sit on either downstairs or up on the top deck. "Kitty" doesn't always run every weekend as she is a real feature but to find out when she is running please ring F.H.P. staff to enquire when she is on the tram tracks.

## Fantasy Ball for Children of All

### Ages

**At Avebury Park Friday 18<sup>th</sup>**

**November 5 – 7pm.**

**9 Eveleyn Couzins Ave, Richmond  
(off North Avon Road)**

Avebury House will be hosting a Fantasy Ball for young people (and those that are young at heart) in Avebury Park. Dress up as your favourite character or create a wearable art costume. There will be opportunity to make a costume on the day. Free Entry

- ❖ Music
- ❖ Dancing
- ❖ Competitions
- ❖ Grand Parade
- ❖ Surprise Guests

Contact Lesley on 381 -6615 for further details.

In the event of wet weather, event will be cancelled.

---

## **"Footprint Cafe"**

**105 NORTH AVON RD NOW OPEN**

**Hours 10 am - 2 pm Mon - Thurs**

**Coffee, Tea and Food**

---

## **Illegal Trading**

In the 1930's and 1940's it was against the law to sell anything on a Sunday. Few people had refrigerators so how did you get fresh cream for Sunday dinner? Between the Beere's two shops in North Avon Rd was a narrow alley with a gate onto the street and further down was another gate behind which were doors which led to each shop. Hung on the gate was a hand bell.

On Sunday morning those 'in the know' would take their cream jug to the second gate and ring the bell. The gate would open a crack, a hand would emerge, money would change hands and the gate closed. Almost immediately the filled jug would be returned and the gate shut. A quarter pint (about 125ml) of cream cost three pence (3 cents). I used to dip my finger in the cream on the way home and lick the cream off -- Mum never suspected!

Ted Harrall



## "Soul's Repose"

I have, in my opinion, the best house in Christchurch. It was built 99 years ago, with wood from the 1906 International Exhibition in Hagley Park.

It does not have a foundation, but sits on big stones.

For many years, I had trios every night. George Berryman played the 'celo and complained that the spike on the end of it was slipping on the floor.

*Don't worry George, I said, I'll drill a little hole in the floor for you to stick your spike into.*

I got out my best tools, but couldn't drill a hole in the floor, the floor was too hard.

In short, my house is built of kauri and black pine. Despite the weight of 7,500 books, three 4-drawer steel filing cabinets, two organs and two pianos, the floor is still perfectly level.

My place is called "*Soul's Repose*", which name I have painted on the name-plate by the front door.

This name worries people.

In fact it's 100% classical.

When Ramses II, Pharaoh of Egypt, waged war against Assyria in the north, he was deflated to discover at Nineveh that Ashurbanipal had a library of 25,000 cuneiform volumes. For Ramses II had always skited that Egypt was the oldest and greatest civilisation.

Back home, as the Greek historian Diodorus Siculus has recorded [Βιβλιοθηκη Ιστορικη I.x1ix.3] he constructed a magnificent royal library to which he gave the name Ψυχης ιατρειον - a collection of remedies for the diseases of the soul, *Soul's Pharmacy*.

From the day I first read this definition, I decided that when I could buy a second house to put my books in, that is what I'd call it.

In the event, I reneged, fearing that with such a name-plate I'd be woken up in the early hours of the morning by young people wanting contraceptives. So "*Soul's Repose*" is not an accurate translation but only a paraphrase of the Pharaoh's splendid title.

When my friend Tony Novis went to tour Europe on his motorbike, he asked me what was the greatest thing to see in Europe and I replied without hesitation: *the library of St Gall, in N.E. Switzerland, the oldest library in Europe.*

He visited it and sent me back a postcard to tell me that the name on the cloisters which led into this library was: Ψυχης Ιατρειον. On my visit in 1947 I had been so keen to get inside and see the rare books that I'd missed this inscription.

Tony was a member of my *Sunday Night Advanced Greek Class* and knew his Greek.

Passers-by often comment that the east side of my house is boarded up. For two reasons: (1) the room behind the 3-ply used to be my darkroom, where I developed films, printed and enlarged photographs of my two sons to send to their Swiss grandmother who

had never seen them in the flesh. (2) Because of the local vandals, who were constantly breaking my windows.

I felt genuine compassion for the last lot who ripped off the 3-ply and broke their way into my Stackroom only to find there was neither ammunition, nor alcohol, nor drugs but only 4,000 Greek books which they couldn't read!.

John L Moffat

## Richmond Computer Net

Low Cost

### Public Internet Access

for \$1 donation per half hour

Help and Tuition provided by volunteers  
available at:

## Avebury House

9 Eveleyn Couzins Avenue

11am - 3pm Daily

weekends by arrangement

- Six computers with fast Internet access
- Help with computer problems
- Help with e-mail and internet
- Informal 1:1 tuition
- Laser printer
- C D burner available on request (enquire at office)

For further information phone 381-6615

Closing Date for copy and advts. for the  
December/January issue is November 21st

**"Its your home-  
you only get  
one chance  
to get best market value.  
Let my 27 years active real  
estate experience work for you".**

**Phone 355-6444 or 0274 344234**

E-MAIL

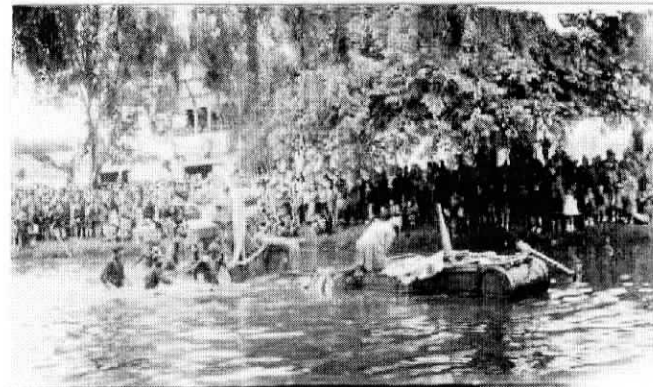
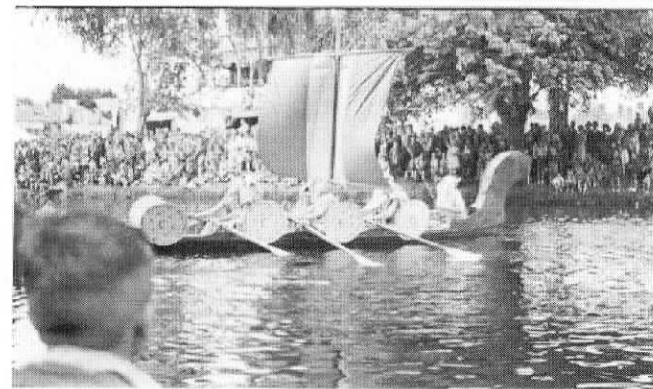
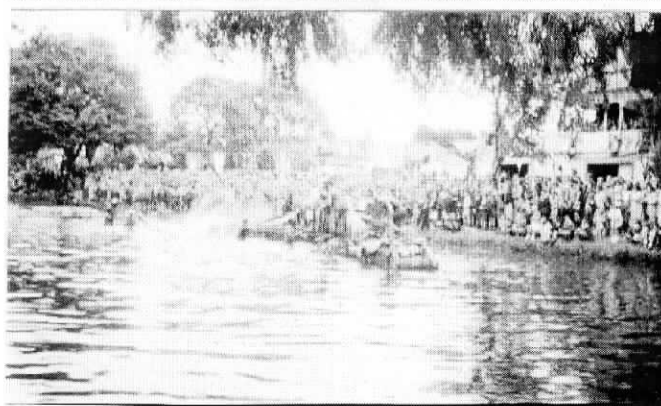
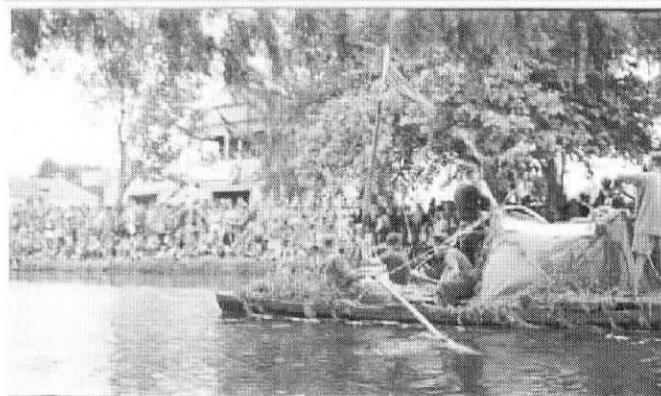
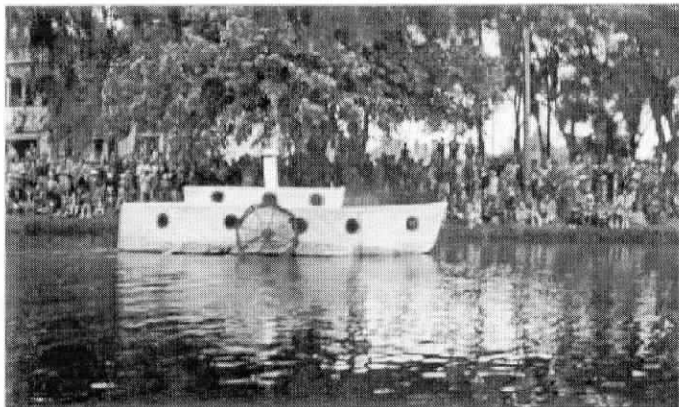
[corneliusrealty@xtra.co.nz](mailto:corneliusrealty@xtra.co.nz)

Cranford / Innes Corner

Local resident Local knowledge

**Bill Cornelius**  
REALTY LTD MIRENZ





## Boating on the Avon

A popular event for Richmond people and no doubt many others was the annual Opening of the Boating to mark the start of the rowing season.

This was before the development of Kerr's Reach, when the Union and Canterbury boat sheds were close to the Fitzgerald Avenue bridge and the Avon and Christ's College were situated between Fitzgerald Avenue and Stanmore Road bridges.

Banks on both sides of the river, from Fitzgerald Avenue to Swann's Road bridges, were crowded with spectators watching the proceedings which included a parade of decorated boats, Dark Town crews with faces blackened in mock battles with each other and of course many rowing races.

One of the spectacles was a spar suspended part way across the river, on which participants would sit astride, with pillows in their hands, trying to knock each other into the river.

There was usually a brass or pipe band in attendance as well as an ice cream cart, quite a novelty in those days.

Russell Sears

# RICHMOND

WORKING MEN'S CLUB & M.S.A.

P.O.Box  
26-036

Christchurch



Phone  
389-5778

[www.rwmc.co.nz](http://www.rwmc.co.nz)

**WE ARE PROUD TO  
SUPPORT OUR COMMUNITY**

## STRIKE A HAPPY MEDIUM!

My professional fee is more than 1%  
but less than 4%.

More importantly though, is getting you  
the best possible result through astute  
switched on marketing and strong  
negotiation.

Successfully selling in Richmond/Avonside  
Phone me for a no obligation appraisal



**Kevin Moore**

Residential Property  
Marketing  
J Butler Realty Ltd  
Ph 354-0014 (24hrs)  
or 027 201 4260  
Email [kevin@moorerresults.net.nz](mailto:kevin@moorerresults.net.nz)



7th October 2005

Letter to the Editor - Richmond Community News.  
YOUR LOCAL M.P. TIM BARNETT.

Was nice to read A Kelly's article in the last issue of Richmond Community News regarding the help he or she received for their local M.P. Tim Barnett.

Sadly A Kelly portrays well the image many of us carry of our parliamentarians. Although it is fair to say that many MP's bring much of the derision upon themselves

I'm sure that many of your readers enjoyed reading A Kelly's article, I'd like to see more such articles. I suspect that Tim Barnett is a modest person but it would be good if you could encourage him, where possible, to give regular articles on what he has been up to.

I own a real estate office and move about in the St Albans/Richmond community a lot. I have never met Tim Barnett but I know from my travels around the district that he does a tremendous amount of work, most of which is not going to gain him headlines but is going to make many of his constituents lives better.

I met a returned serviceman who was having difficulty getting funding for medical attention, his initial application was declined, after talking to Tim Barnett an advocate was appointed to represent his case on appeal. The appeal was successful, the man had his medical procedure and now has a much better quality of life.

I met a woman who was put in touch with Tim Barnett through the Yellow Ribbon Foundation which supports families of men who are in prison. This woman was having great difficulty meeting her mortgage repayments, feeding and clothing her three young children, she was very depressed and likely to do something which would have been very sad for her three children. Through the

efforts of Tim Barnett her life has been re-structured and she is now coping much better.

These are just two people who spring to mind, I'm sure there are many other people who have been helped by their M.P. and have interesting stories to tell.

Another article which could be of interest to your readers is for you to interview Nicki Wagner who I see is now the National Party list M.P. for Christchurch Central. What does a List M.P. actually do and is she officially the List M.P. for Christchurch or the List M.P. of the National Party with no constituency. If Nicki is officially the List M.P. for Christchurch Central does it mean we will have Tim and Nicki sharing the workload.

Just while we are on politics, the downside of the election was that several M.P.'s were rejected by the voters and went straight round the back and re-entered parliament as List M.P.'s. Do we really need these back door M.P.'s? I thought democracy was simple, if the voters vote you in you are in, if the voters vote you out you are out. I admire John Tamihere he stood up and accepted the voters decision.

Perhaps you could get Tim Barnett to pen an article as why we need the Lists.

Keep up the good work, Richmond Community News is getting better and better.

### **Richmond Methodist Handbell Ringers**

Schedule of Performances/Engagements

#### **Friday 2 December 2005**

10:30 am. We play at the Rest Home Service at the Richmond Methodist Church.

#### **Wednesday 7 December 2005**

2.00 pm. We give a recital for the Papanui Methodist Women's Fellowship, at the Methodist Church in Chapel St, which is on the corner of Harewood Road



## **John Rhind Funeral Directors**

**Part of the Richmond Community since 1881**

Operating from our original site in London Street for over 120 years, John Rhind Funeral Directors today offer a modern chapel and homely catering lounge, and a team of caring professionals, including an after-care bereavement support person.

**J • O • H • N  
RHIND**

**FUNERAL DIRECTORS**  
*Since 1881 ... a continuing  
family tradition*

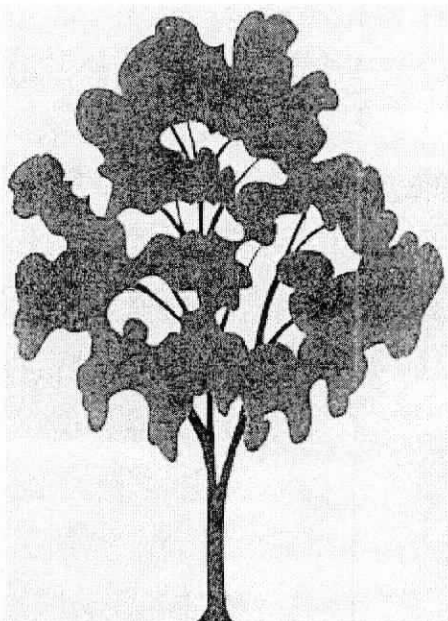
**Phone**  
**379-9920**  
**24 hour assistance**

John Rhind Funeral Directors,  
19 London Street, Christchurch.  
Fax (03) 366-7488





## The Evergreen Club



On the 2nd August - a "Delta Community Service" for the older citizens and their caregivers opened their doors in the North Avon Baptist Church Lounge. The club will cater for a small group of older people (up to 14), who enjoy friendship, exercises and other activities in a happy "family" atmosphere. It will also provide support and relief for full time caregivers.

Initially, the club will be open on Thursdays and Fridays, from 9am until 3pm. There will be a varied program, hot meal at noon and transport can be provided. For more information or reservations, please ring 382-0758 (and leave a message for Patricia Ducker)

### Do you have a Neighbourhood Support Group in your area?

Neighbourhood Support can help make your neighbourhood a friendlier, safer and more caring place in which to live.

If you are interested in knowing more about setting up or joining a group Contact Sally Thompson at Neighbourhood Support Canterbury

Phone 341 6749 or 03 341 5829

Or email [canterburyns@paradise.net.nz](mailto:canterburyns@paradise.net.nz)

## Neighbourhood Week

Neighbourhood Week is promoted by the City Council and Neighbourhood Support as the time to get together to meet your neighbours. You can apply for funding from your local community board to hold a street barbeque or rent a skip to collectively deal with your garden rubbish. It is a unique and positive initiative to try and create a sense of community, and to have a reason for neighbours to meet neighbours.

When campaigning during the election I was very saddened to meet a lovely Richmond lady, who not two days before had been the victim of a brutal attack in the alley way from ... street to .... Street. Her injuries while not necessarily being medically serious was horrific to view and I am sure will be life lasting. The attack could have been far worse had the attacker not been disturbed by a neighbour.

On consultation with Canterbury Neighbourhood Support there are no formal neighbourhood support groups registered in the area, however they may exist informally. But an incident like this only serves to highlight the importance of knowing your neighbours. It is all too simple to close our eyes and ears to things we find disturbing, as it can also be frightening. But I commend the person who showed an interest and took the appropriate action to call the police during this terrible attack.

Living in a neighbourhood where you can be greeted by name, a wave or even a smile has significant affects about how people feel about where they live. Richmond has a wonderful sense of community about it, but we can do more to ensure we do not feel socially isolated or unsafe.

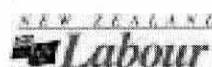
During Neighbourhood Week, I will be visiting in the community and attending a public meeting organised by Avebury House and Canterbury Neighbourhood Support. I hope that you will take the small amount of time needed to attend the meeting and learn more about how to keep yourself safe in your home and neighbourhood. I will look forward to meeting some old and new neighbours.

Tim Barnett

M.P. for Christchurch Central

### TIM BARNETT

**Christchurch  
Central's  
Member of  
Parliament**



Level 3, 103 Worcester Street, PO Box 13 295, Christchurch  
Phone: 03 377 8840 Fax: 03 366 4770 Cell: 0274 570 809  
E Mail: [tim@timbarnett.org.nz](mailto:tim@timbarnett.org.nz) Internet: [www.timbarnett.org.nz](http://www.timbarnett.org.nz)



Kia Ora,

We had a wonderful week away with the year 6 leadership camp and coming home to a long weekend was really appreciated! We spent a full on week providing the children with some amazing opportunities. The highlights included, Te Papa, The Wellington City and Sea Museum, The Zoo (and overnight stay there), the Cable Car, movies, swimming and the great day we had at Holy Family Catholic School.

Our trip to Parliament was very interesting and exciting. We had a fantastic tour with Monique sitting in the Prime Ministers chair and Jessie-Lee in the Queens chair!! Tim Barnett was very generous as always, providing the children with afternoon tea and introducing them to the Deputy Prime Minister, Michael Cullen. It was a very busy day in Wellington (last Tuesday) as the ministers were being announced that same day! Tim was extremely hospitable and we had an interesting question-answer session with him.

Another highlight was going to Capital - E, where the children made their own music clips, which were posted on the internet. The children really excelled using computer technology to produce some interesting sounds!

Over all the children were extremely well behaved and are a credit to the school. A huge thank you to Tristan and Jim who worked very hard during the week and both of them were worth their weight in gold.

Nga mihi nui kia korua. Finally, an award winning thank you to Janet Ackerley who has worked extremely hard to fundraise and organise such an exciting trip for our children.

We had the opportunity to take loads of photo's as you can see by just some of the pictures on display.

As we were declined funding this year, Janet has organised extra fundraising activities for the remainder of the year, so support from children, their parents/caregivers and the community would be greatly appreciated.

We welcome the safe return of Shayna, all the Koru Care children and caregivers who returned recently from an exciting and thrilling trip of a lifetime in Amercia. Once again a huge thanks to all the team at Air New Zealand and Koru Care for all their dedication and hard work for so many children. It is lovely to be back in the school and we look forward to a great term four.

### THE DAILY BAGEL SHOP

Please support our local businesses who have sponsored the school. We would like to thank the Bagel Shop and Lois for the wonderful hot bagels donated to our school every day this year. All children look forward to bagels as this supplements their lunch. We encourage healthy eating and the Daily Bagel Shop supports this.

### TE HUIHUINGA TAMARIKI FUN DAY

We would like to thank all the Bilingual schools who participated in a wonderful experience here at

Te Rito o te Harakeke. It was so nice to see so many tamariki intermingle with each other. There was lots of beautiful singing, action songs, and speeches to represent each school. We hope to continue this theme next year.

### LIFE EDUCATION - HAROLD THE GIRAFFE

We would like to thank Laura Goodwin who is teaching our tamariki all about the health and safety of the human body. Laura has taught our tamariki for the past 4 years.

### FOR SALE

Second hand children's school tables and chairs. Please call in and speak with Tania in the office or phone 3897 168. Price negotiable and very reasonable.

Best wishes  
Annie Bowden  
PRINCIPAL



Holy Family School



Parliament with Tim



Te Papa Museum

### Disclaimer

Views and opinions expressed in Richmond Community News are not necessarily those of the Editor or Avebury House Community Trust. No responsibility is accepted for incorrect information contained in advertisements or editorials. Advertisements for publication are accepted in good faith and publication of an advertisement does not imply endorsement by Avebury House Community Trust. The Richmond Community News is published monthly by Avebury House Community Trust, 9 Eveleyn Cousins Ave, Richmond Christchurch. Telephone 381-6615 or E-Mail avebury@xtra.co.nz.