

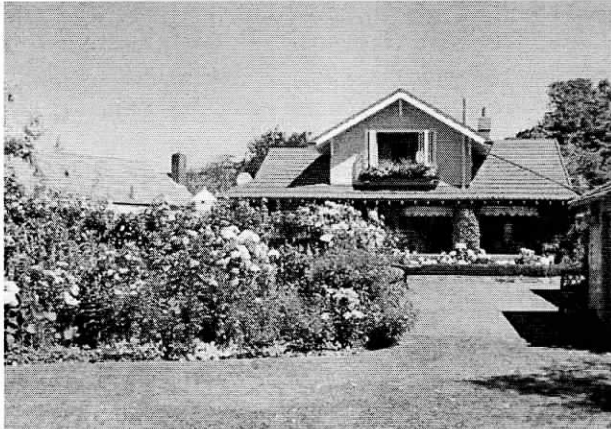
Richmond Community News

•September 2006 •

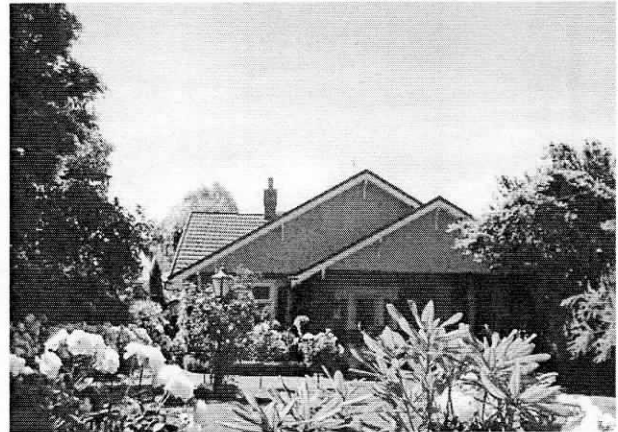
Vol 4 No 8 Issue 40

Twentysecond in the Historical Homes of Richmond Series

15 Banks Ave



Front View



Back View

“DALKEITH”

at 15 Banks Avenue is a triple brick, tiled roof villa, featuring an imposing entrance leading to a tessellated tiled verandah. The name reflects the owner's Dalmatian origins and the property is run as a tourist destination where 12,000 visitors annually view its magnificent garden and have morning or afternoon tea.

The house was built (reputedly by Hurst Seagar) in 1929 for a prominent Christchurch accountant.

The third and present owners, Pauline and Keith Orivich, have extended and enhanced the house considerably and it is now two storeyed although this is not evident from the street. It sits on a 1960m² section which is enhanced by a pigeon loft and swimming pool.

The house renovations were completed last year with the completion of a new kitchen in a traditional English style

Pauline and Keith have met all the previous owners of the property and all their memories of the home are of how happy their childhoods were growing up in this house. They have owned the house for 17 years and their time has been a very happy one raising two daughters.

They believe, with the other owners, that the house contributes itself to being a family home and plays its part in giving its owners a very rewarding stay which is why the house has very rarely been passed on to new owners.

Keith Orevich

PRINTMAX 

Cnr Moorhouse Avenue & Gasson Street P.O. Box 7232 Christchurch
Telephone 03-365 5179 Fax 03-365 1286 www.printandcopy.co.nz

Best Deals

Dishwash Liquids \$1.29 540ml, Window Cleaner \$2, Oven Cleaner \$2.50, Shampoo/Conditioner/Bath lotion \$2.00, 750ml
Deodorant \$1.99, 2L Disinfectants \$3.20, Toys from \$2.00, Shirts \$9.99 ea, Trousers \$14.99, Winter jackets \$30 ea, Dress jackets \$39.99 ea, Back packs \$9.99 ea, Beanies, Gloves, Socks, Scarves, Vests, underwear, T-shirts at special prices 2L

OPEN 7 DAYS

Stanmore Homecare Products

103 Stanmore Road Ph 389-3686

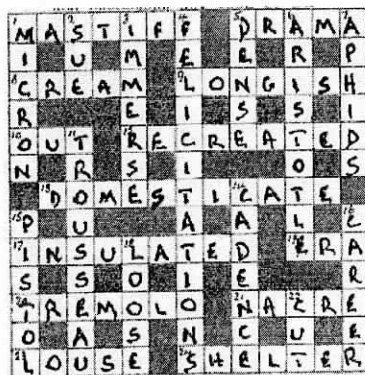
The Richmond Community News requires stories and items of local interest. If you have an item for publication please send it to: Avebury House Community Trust P.O. Box 26097 attention RCN

hair and now

\$10
HAIRCUTS

just come on in
hours: Mon - Fri 9am - 5pm
Sat 9:30am - 4pm
330c Stanmore Road
Opp Richmond Electrical

Last month's solution



The solution to this month's crossword will appear in next month's newsletter

Crossword CLUES

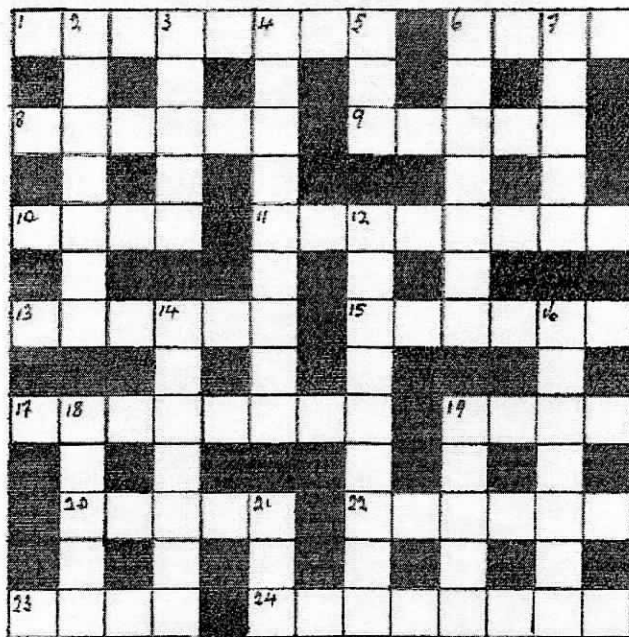
ACROSS

1. Open air (8)
6. Tart (4)
8. Triangular sail (6)
9. Cry (5)
10. Prejudice (4)
11. Whole numbers (8)
13. Order of meeting (6)
15. Profit (6)
17. Short-lived thing (8)
19. Insects (4)
20. Foreign (5)
22. see 6 dn
23. Expectant (4)
24. Regretted (8)

DOWN

2. Departing (7)
3. Marsh plants (5)
4. Combine resources (9)
5. Sphere (3)
6. and 22 ac. legerdemain (7,2,4)
7. Downright (5)
12. Bull-fighters (9)
14. Lacking (7)
16. Entourage (7)
18. Crash (colloq) (5)
19. Pale (5)
21. Neither (3)

RCN CROSSWORD NO. 1333 BY GWP



SUN NING TAKEAWAYS

273 Stanmore Road Telephone 389-3113

CHINESE MEALS ~ FISH & CHIPS
HAMBURGERS

HOURS

Tues - Wed: 11.30 am - 2pm/4.30pm - 8.30pm
Thurs - Sat: 11.30am - 2pm/4.30pm - 10pm
Sun: 4.30pm - 8.30pm Mon Closed

PHONE ORDERS TAKEN
SMALL FUNCTIONS CATERED FOR
SUPPORT YOUR LOCAL
RICHMOND BUSINESSES

What's on in September

Avebury House, situated at 9 Eveleyn Couzins Ave. Richmond, is a community-run, low cost facility which has rooms available for hire.

Situated in the midst of Avebury Park, the house, which has been refurbished, has run several open days and social events.

In addition to the amenities for hire, the following classes and activities are available:

Gentle Exercise Class - Mondays 1- 2p.m
(wear comfortable clothing) Cost \$2.50

This Sit and Be Fit class is a fun and healthy way to retain mobility, independence and meet new people. Designed especially for those with limited mobility, older adults and those with health or weight problems. Enjoy these simple and gentle classes at your pace, and enjoy a cup of tea with us afterwards.

Richmond History Group

Held on 2nd Wednesday of each month. No cost.

Next meeting Wednesday 9th August 4 - 5pm

History Group meets to share resources and research items of Richmond's heritage. The Richmond Room, a resource room with displays, magazines and items of interest has been set up at Avebury. These resources are available to the public at no charge.

Embroidery Group

Thursdays 10am - 12 noon

Beginners to advanced. Tuition available from a patient, experienced tutor.

Please ring Allison on 388-9377 for more information

Shirley Brownie group

Meets at 6pm every Tuesday at Avebury House

excluding school holidays. Restart July 18th

Contact Kim on 366-5434 for details

Music & Movement for Preschoolers

This popular group meets on Fridays 11am - 12 noon excluding school holidays Cost \$3 first child \$1.50 for each subsequent child.

For enrollment/enquiries ring Ursula on 332-0633

Flax Weaving Courses with Ali Brown

September 9th 10am - 4p m

Ph Ali Brown 329-7051 for registrations

Hugs All Round Quilt Project

Commencing Wednesday August 30th at Avebury House

11am - 4pm enquiries to 381 6615

For further information about facilities and classes etc. please contact:

Lesley McMillan

Community Development Worker

Ph 381-6615

**Closing Date for copy and advts. for the
October issue is September 22nd 2006**

THE DAISY FIELDS

taken from Johannes C. Anderson's book
"OLD CHRISTCHURCH" published 1949

"Circa early 1900's across a footbridge from East Belt (Fitzgerald Ave.) we come to an open paddock known as the "Daisy Fields". Heywood/Harvey Terrace and Templar Street now intersect this area and it is remembered as a terraced paddock, full of daisies, sloping down to the river. This area was known for boating celebrations, booths selling cakes, drinks and fruit, high poles adorning the riverbank festooned with flags and bunting. The gala days consisted of boat races and decorated processions. These were the days when racers were so keen they would carry their boats over the Bridle Path to race in a Lyttelton Regatta on New Year's Day and row home round Godley Head and up the winding river to disembark at Richmond."

We move east on River Road to where the Avonside Tennis Courts now stand where the boat sheds once were, this area was known as "Ellengowen" stretching all the way to Stanmore Road, overgrown with cutty grass. There were only three houses along here, all owned by men of significant importance in Richmond's history. Joseph Brittan (brother of William Guise Brittan) home called "Linwood", Fooks, a surveyor and Blytt a silversmith. Later the author of the above book built a house with merry widow eaves and a stone fence and it had the biggest blue gum in the district. Once across Stanmore Road there was no more than a track, with dense growth of tu-tu, flax and other natives and blue-eyed periwinkle that provided honey and paint brushes. This area was considered to be wild and unsafe.

The History Group at Avebury House would like to make contact with people with information and photographs of the early days of the tennis club and these three houses in River Road. We are hoping to do a display of this area for Heritage Week. If you can help please phone Shona 3896787 or Noeline 3894310

Harcourts

GRENAIER REAL ESTATE LTD. 0800 55 1234
191 Woodham Road, Avonside

If you are looking for local honest advice
and want to buy or sell a home

Look no further - Call me today



Gary Hughes

Property Consultant

Telephone 03-381-2361

After Hours 03-386-1370

Mobile 0275-630-994

email: gary.hughes@harcourts.co.nz

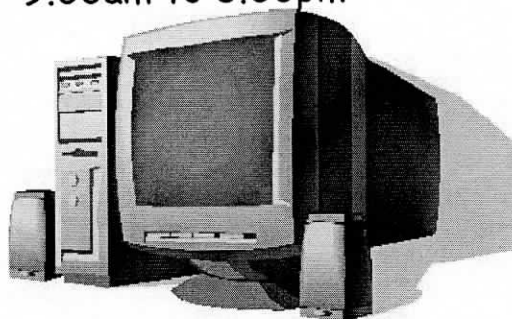


He Tohutohu Pai ki Otautahi
Positive Directions Trust

Richmond Drop-In Centre

When:

Mondays	9.00am to 3.00pm
Tuesdays	9.00am to 3.00pm
Thursdays	9.00am to 3.00pm



Where:

Room 10
Richmond Primary School
Pavitt St, Richmond

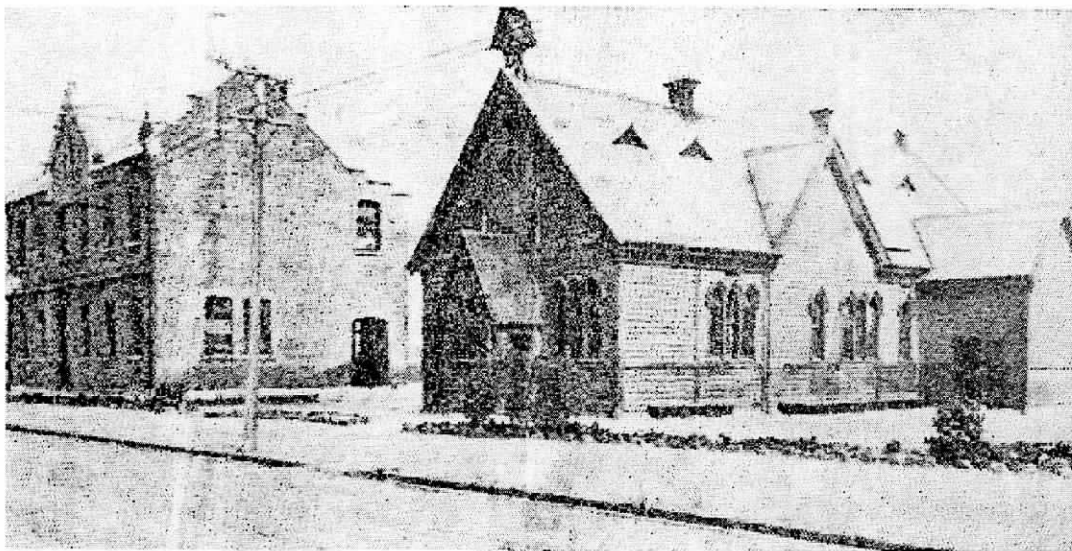
Features

- Adult Foundational Literacy & Numeracy support
- Caters for all learning styles
- Kinaesthetic Learning techniques
- Computer instruction, Internet & Email available
- CV & Job Search advise and assistance

Delivered by people who:

- Are active community members
- Have extensive experience in youth and adult education
- Specialize in Literacy and Numeracy support and personal development

Should you like to know more please feel free to pop in for a coffee and a chat, or contact Adele on (03) 389 6610.
We look forward to meeting you soon.



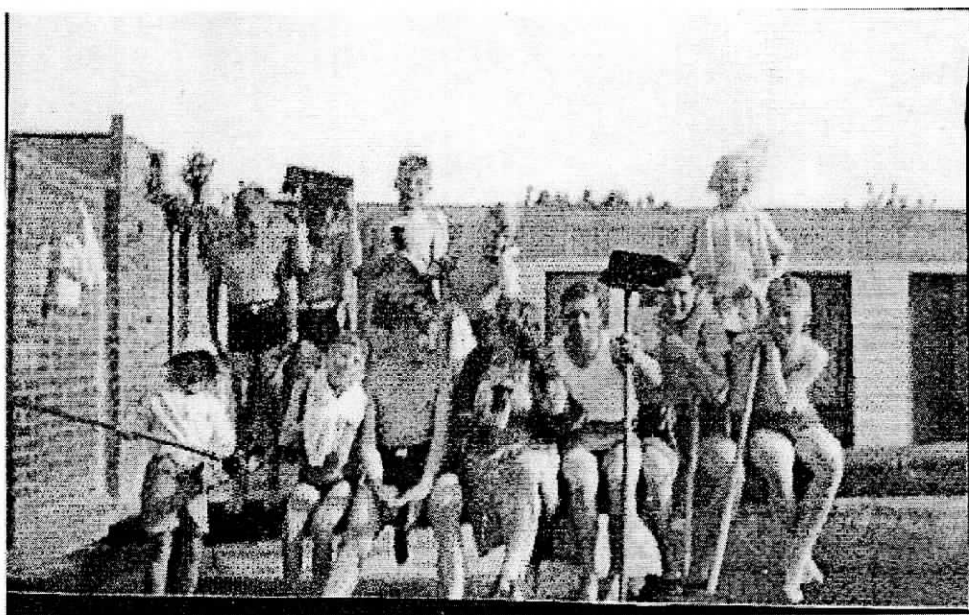
Original School

The Richmond School and Baths

Richmond School once fronted onto Stanmore Road, London and Cumberland Streets, on approximately 2-3 acres of land. Originally opened as a subsidiary of the Gloucester Street school, it became independent in 1882. Lack of playground space forced the Education Board to purchase another 1½ acres of land in 1924.

The school's main building consisted of a two storey structure containing four rooms, each capable of seating sixtyfour students. The earlier buildings were built from wood, one storey in height and capable of seating two hundred and fifty students in five classrooms. The roll had an average of six hundred and average attendance was around five hundred and twenty pupils. The headmaster had a staff of six certified teachers and five pupil teachers – the equivalent of around fortyseven pupils per teacher.

The children enjoyed a large playground, an exceptional feature was a large swimming bath. The bath cost nine hundred pounds to erect in 1892and measured seventyfive feet by thirtyfive feet and was surrounded by a brickwall. The pool was supplied with water via a second stratum well, which when initially opened shot water twentythree feet high into the air and flowed at ten thousand gallons an hour. The bath itself held ten thousand gallons of water. At the time, the bath was considered one of the best in New Zealand.



Children at Baths



"LIVE TO THE MAX!"

Making a Choice for Change

Delta Community Support Trust
PO Box 26 091, CHRISTCHURCH
105 North Avon Road

Phone: (03) 389 0219
Fax: (03) 960 3278

Do you want to "Live to the Max?" Do you want your life to change?

Delta Community Support Trust runs a course to enable you to live life to the max! Meet with a support worker to discuss your life as it is now, then using a self-profile, we brainstorm new directions and set new goals. Participants are then linked to a support group of four or five others, meeting weekly for 1 1/2 hours, to help each other work towards their individual goals. These groups gather for four months. But it's not all hard work; participants enjoy meeting new friends and have fun as well.

Apply to join the "Live to the Max" Course by phoning Marlys or Rebekah on 389 0219.

"Explore" Course.

Do you want to "Explore" your world?

Discover new places? Have new experiences? Discover more about yourself and make new friends?

Delta Community Support Trust would like to invite you to join us once a week for 10 weeks to broaden your life experiences through fun filled mystery adventures!

To find out more please phone Marlys or Tony on 03 389 0219/0212.

Delta House, 105 North Avon Road, Richmond.

"FOOTPRINTS CAFE"

105 NTH AVON RD OPEN NOW Hours: 10am - 1pm Mon to Thurs
Coffee Tea & Food

'HUGS ALLROUND'

WOULD LIKE TO INVITE HAND OR MACHINE
SEWERS TO JOIN THEM MAKING

QUILTS AND COMFORTERS

FOR UNDERPRIVILEGED CHILDREN AGED BIRTH
TO 15 YEARS.

THIS IS A 'NOT FOR PROFIT' PROJECT

Commencing Wednesday August 30th
11am - 4pm at Avebury House
9 Eveleyn Couzins Ave

Volunteers who are not so confident with
their sewing skills are also welcome as there
is plenty help available. Ring OLGA 980-1654



Stanmore Road

AUTO SPARES

(formerly Super Cheap Auto Spares Ltd)



245 Stanmore Road
Richmond
Christchurch

Ph 03 389 4555
Fax 03 389 4213

For a Complete Range of Automotive Parts at Competitive Prices

Tim Barnett - Patrolling the Community

While most of us are getting ready to 'turn in' for the night, or snuggling up for a late night session in front of the "tele"; there are a group of committed community volunteers, getting ready to work through the night. The Community Patrol volunteers cruise our streets during the long hours of the night to help ensure that we may spend our night in uninterrupted peace.

Tim Barnett, the Member of Parliament for Christchurch Central, a busy inner city electorate, is aware that the central city can be just as busy during night hours as it can during the day. However, accepting an invitation to join Ross Fergusson, of the Shirley Community Patrols; to take a look at other parts of his electorate during the night and to see what is involved in keeping our neighbourhoods safe at night, was an opportunity worth experiencing.

Clothed in their safety reflector jackets, Tim and Ross set out in the Shirley Community Patrols marked car, to commence their work through Shirley neighbourhoods at around 10pm. In the five hours Tim spent out with Ross, he said he learnt a lot about what Community Patrols did for the community. "There were extremes in the evening's events" said Tim. From the first drive by of the night at the often eventful Mall car park, this proved on this night to be in perfect peace, to the attempted assault on a young woman waiting at a bus stop.

Radio contact from the patrol car is maintained at all times with the Community Patrols Base. This is to ensure not only that the safety of the volunteers is monitored at all times, but in order for patrolling cars to become aware of any reported instances. They also

maintain a strict log of mileage covered and activities that have occurred

Community Patrols work in close association with the NZ Police. Whilst they acknowledge that they are not there to act in a policing function, Community Patrols certainly play an important role in maintaining community safety. "They are like a roving neighbourhood support group" said Tim "being the eyes and ears for our community. I am impressed by their professionalism".

Tim Barnett is a strong supporter of community groups and organisations such as Community Patrols and Neighbourhood Support. The volunteers that work within these organisations certainly are the fabric of our society.

Tim Barnett
Member of Parliament
Christchurch Central

BARBADOES STREET BRIDGE

In 1878 the population of Christchurch numbered thirteen thousand. It was at this time that the residents of Bingsland decided that a bigger bridge be built for heavier traffic. A footbridge across to the Barbadoes Street cemetery was all that existed. Five hundred Bingsland residents petitioned the council for a bridge. At the time the council required a downpayment for such works and insisted that the residents pay two hundred and fifty pounds of the thirteen hundred and fifty pound cost to build. The residents rallied and by 1879 had raised one hundred and fortyfive pounds. John Toovey, proprietor of the recently demolished STAR and GARTER, petitioned the council to begin building after payment was paid. The council refused and in the following month a further one hundred and ninety pounds was subscribed by notable donators. It was only after a seaman drowned by slipping off the banks of the Avon, did the council begin tendering for a bridge. It was said, had the bridge been in place, the accident would never have happened.

TIM BARNETT

**Christchurch
Central's
Member of
Parliament**

**NEW ZEALAND
Labour**



Level 3, 103 Worcester Street, PO Box 13 295, Christchurch
Phone: 03 377 8840 Fax: 03 366 4770 Cell: 0274 570 809
E Mail: tim@timbarnett.org.nz Internet: www.timbarnett.org.nz

RICHMOND

WORKING MEN'S CLUB & M.S.A.

P.O.Box

26-036

Christchurch



Phone

389-5778

www.rwmc.co.nz

**WE ARE PROUD TO
SUPPORT OUR COMMUNITY**



Te Rito O Te Harakeke
Richmond School
PO Box 26025, North Avon, Christchurch
Phone/Fax (03) 3897 168, Email: office@richmond

KIA ORA COMMUNITY

Banking is often seen as a complicated and grown up kind of thing, but learning to save from an early age and learning how savings work, why it's important to save and how it accumulates are essential life skills. The National Bureau of Economic Research indicates children who receive personal financial literacy education will accumulate more assets in later life than children with similar characteristics who don't receive this education. We are currently running a Financial Literacy program in the classrooms this term. If our goal as parents is to bring up children who know how to "behave correctly," we cannot expect them to obey without knowing why they should act in a particular way. We need to teach children to act in positive ways by modelling the behaviour ourselves and acknowledging and praising positive behaviour. When a person acts, it's always an attempt to satisfy a need, of trying to get what he or she wants. A child does not stop to consider if what he or she is doing is right or wrong, good or bad. He or she is only concerned with whether the need is satisfied. When a child acts in a way that we judge to be negative or unacceptable, it can be looked upon as an opportunity to help him learn more positive ways to get what he wants. You must always be able to give good reasons why the child is experiencing an unpleasant consequence as a result of his or her actions. In other words, the rules must be reasonable, not arbitrary. Children will fight against rules which they consider "unfair" or simply for the convenience of the parent. If you offer explanations rather than orders, you will gain the respect of your child. Happy parenting.

Christine Weepu
Acting Principal

MEMORIES FROM THE PAST *Don Eade (part four)* ...

"One of the clearest memories I have of being at Richmond School from 1946 to 1952 was the daily delivery of free milk to the school. This came in steel crates of some two dozen one pint bottles, with a wide top and a cardboard lid with a hole in the centre for the straw. They were left each school morning in a small covered shed near the front gate, and two pupils from each class would carry two, sometimes three crates to each classroom for daily consumption. By the end of the school day it was rare for any full bottle to be left in its crate at the front of the classroom. Summer or Winter. It was usual for the top few inches of the milk to have a rich cream content, hence its popularity. Some kids could drink four or five bottles in a day, and it was not unusual for extra trips to be made to the milk shed for more crates to accommodate the thirsty. Milk was sold to the public for the grand price of one penny a pint, and the tinkling, jangling sounds of the milk cart with the clapping hooves of one horse power could be heard for some distance on a cold clear day. In those days it was music to the ears of many. Each morning and at the end of the school day, two school patrols would be on duty. One outside the front gates of Richmond School, and the second at a place in Stanmore Road which many pupils would use to cross this main thoroughfare. Striped red and white metal poles with a STOP sign were used to halt traffic flow and allow Richmond School pupils to safely cross. In those days few parents would come to school to collect or escort their sons and daughters home, and most kids would have been very embarrassed had they done so. After all we were not babies, but little roughies and toughies - as some parents would say. These were usually the parents of unlucky children who went to other schools. Richmond School then had an undeserved reputation for producing rough kids, but I did not then, or now, agree with that assertion. Boisterous sometimes, but never rough. After all, I've heard shouting yelling kids the world over, and that God for that! The hordes of Richmond School kids are NOT the hordes of Genghis Khan bent on destroying the pleasant suburb of Richmond, where are they now? Mrs Ennis, as I once told an angry, shouting woman who could with a glance identify the footprints of Richmond School 'thugs' in her front garden under the apple tree, became a writer, and to have my own film company, as Mister Street predicted I would, back then in 1952. Charlie Street certainly got it right, as I'm sure many other Richmond teachers have also got it right down the years. The striped metal poles which helped a generation of Richmond pupils to safely cross the road are a metaphor for the many brilliant Richmond teachers who have helped its pupils to safely cross the roads of life." *If you would like to share any of your memories please contact the school on 3897 168.*

SWIMMING SPONSORSHIP

We would like to thank the following people who helped sponsor some of our tamariki to learn how to swim, they are Therese Carey and the Mayor's Welfare fund, Carol and Jenna Chenery from our Richmond community.

THANK YOU TO OUR COMMUNITY

We would like to thank the following people who have donated various items to the school, they are:

Mrs Glenys Dalziel, Heather Mutu and whanau, Mrs van Slooten, Mrs Jan McKenzie

If you have any resources to donate please contact Tania in the office on 3897 1689 during school hours.

SCHOOL FAIR - BOOTSALE

Yes it is that time of year. We are looking for donations to support our school fair. Please contact Tania in the school office if you would like any donations to be picked up. Bookings for the bootsale are now being taken, spaces will cost \$15.00 per site. We plan to have our fair Saturday 25 November 2006.

Nau Mai Haere Mai

CONGRATULATIONS TO RICHMOND SCHOOL STAFF MEMBERS

To all the staff members who graduated from Te Wananga o Aotearoa level one Te Ara Reo Maori. This is a huge accomplishment and we would like to thank friends, whanau and tutors for all the support that has been given to the staff. Level two is in progress. If you would like to join please call Tania on 3897 168 during school hours.



Disclaimer

Views and opinions expressed in Richmond Community News are not necessarily those of the Editor or Avebury House Community Trust. No responsibility is accepted for incorrect information contained in advertisements or editorials. Advertisements for publication are accepted in good faith and publication of an advertisement does not imply endorsement by Avebury House Community Trust. The Richmond Community News is published monthly by Avebury House Community Trust, 9 Eveleyn Couzins Ave, Richmond Christchurch. Telephone 381-6615 or E-Mail avebury@xtra.co.nz.