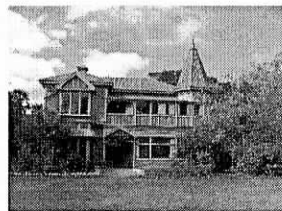


RICHMOND

COMMUNITY NEWS



May 2011

Volume 10 / No.2 / Issue 87

Avebury House Up Date

Avebury House. What a grand old lady. Like many of the older ladies of the Avebury community she has nurtured generations of families, known world wars, endured financial hardship through the great depression, survived a multitude of governments, and survived the wreckers ball after the Richmond community banded together to form the Avebury House Community Trust. Community development is now her focus. The trying times were not finished with her as within the space of six months in September 2010 and February 2011 two devastating earthquakes shook her to the core. Even though she sustained significant damage to her wall linings, her bones stood firm as they had done over the last 120 years. These events ruffled her skirts but not her will. She certainly needs a make over and will be out action until this is done which may take up to 12 months to complete. In the meantime, the spirit of Avebury is being maintained in various locations within the Richmond community.

Lesley McMillan
Coordinator/ Community Development Worker
Avebury House Community Trust

Chit Chat Club and Gentle Exercise

Monday
10a.m. -12noon. \$5.00 cost.
North Avon Baptist Church Lounge
103 North Avon Road

Hugs All Round Quilt Group

Wednesday afternoons 1.30 -4p.m.
Richmond Community Cottage
London Street

Call Lesley on 9422771 for details

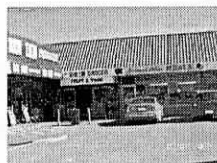


Embroidery Group
Monday 10am – 12 pm and
6 - 8pm

North Avon Baptist Lounge
Beginners to Advanced. **Tuition**
available from a patient,
experienced tutor.
For more information please ring
Alison on 382-2144.

Piko is now open at 248 Stanmore Road - where The Moviemanager was.
www.pikowholefoods.co.nz is their email address which shows the new shop.

Simply Vege opened in the Richmond Village on Wednesday, 27 April 2011 as the Argonaught building has been demolished. Now trading as **The Green Grocer**. It is between the **Bin Inn** and **Richmond Village Butchery** (Formerly Apsley Butchery).



Shirley Boys High School are having a Community Event on

“ Two hours “ says Garry Brown, pharmacist owner at North Avon Pharmacy. “ Just two hours closed because of Feb 22 - we closed 1 hour early on the 22nd and 1 hour early on the 23rd “

The local pharmacy, on the corner of North Avon and Stanmore Roads, sustained only minimal earthquake damage , much the same as Sept 4. “ We took an hour or so to pick everything up, but other than that we were fine - a small liquefaction bulge or 2 in the car park , but that was it. We're very fortunate indeed, and feel a little bit like an oasis of normality given the significant damage suffered by surrounding pharmacies. “

After the earthquake, Garry and staff hand delivered medicines due that day. The following day, without power, was focused on meeting regularly daily medicine needs and emergency supplies and will have created historical oddities - hand written prescription labels.

“ It's interesting to note community impact “ says Garry. “ In the first week or so, we'd have clients call in for meds, who'd stand and watch the in-store TV - we'd left that set on the news, and for many it was the first images they'd seen of damage in the wider city. Something we noted then was the number of people grateful that we were OK, and fully functional. It's supportive for us to continue to hear this from people - and we still do, even 9 weeks afterwards. You also tend to hear a variety of rumours about what will happen to the community - whatever does occur, we still plan to be here. And I'd encourage everyone to talk about their experiences as they have opportunity, and to make sure their voice is heard when it comes to discussion about the shape our community will take in the future . “

National MP Nicky Wagner is holding Saturday morning earthquake clinics at her Christchurch office, 222 Bealey Ave, (corner Bealey and Madras St) between 9 and 12 am. For any earthquake assistance, phone the office on 365 8297 to make an appointment.

The Rise Up Christchurch Telethon – Sunday **22 May**, three months on from the 22 February earthquake, at the **CBS Arena**. A 12-hour global telethon to raise money for Christchurch. To be broadcast by Maori Television from studios in Christchurch, Wellington and Auckland. A chance for everyone to get together, fundraise and have a bit of fun.

Brendon Burns has a mobile Caravan as his office, as his second Office was damaged and since demolished in the Feb 22 Earthquake, which can be seen around the area. His contact phone is still 377-8840.

Bubble + Squeak - Errol is working from home - pet supplies, pets and advice are still available. Please phone 389-2460.

St Vincent de Paul - 265 Stanmore Road - are still having their Free Fridays. They also have an exciting winter project being formed - Mike will report on this when things are in place.

Hi everyone in Richmond,

The effect of the February 22nd earthquake has meant that many of the programmes at Delta are not running or have been modified in some way. Here is a brief update on what we are doing:



Delta Friendship Link (a club for people with intellectual disabilities):

Restarted Tuesday, 19th April with two weeks of celebration and fun activities. These will be held next door at North Avon Baptist Church Lounge. Each session will start with a small party at morning or afternoon tea to celebrate being back together again. Clients and support staff are welcome to come along and spend part or all the day between 10am and 2.30pm. If you are staying over lunchtime you will need to bring a cut lunch. Cost will be \$2 per session or \$5 for the day. By 3rd of May day programmes will start back. They are some changes however. The groups are as follows:

Every first and third Tuesday 10am-11.30am – Craft group (\$4), 1pm-2:30pm – Discovering the Planet (\$4)

Every second Tuesday 12.30pm-2.30pm - Friendship Group (\$4)

Every fourth Tuesday 11am – Active Friendship (\$4)

Every Wednesday 10am-12pm – Knit a Square (\$3)

Every first and third Wednesday 1pm-2.30pm – Bowls (\$2)

Every second Wednesday 1pm-2.30pm – Singstar

Every fourth Wednesday 1pm-2.30pm – Muffinbreak (\$3)

Every first and third Thursday 10am-11.30am – Zoomba (\$2)

Every first and third Thursday 1pm-2.30pm – How to? (\$4)

Every second and fourth Thursday 10am – 2pm –Cuppa and Housie (\$2)



Any enquiries, please call 389-0273

The Evergreen Club

The Evergreen Club provides a day programme for the elderly, full of fun, activities, outings, food and friendship. Transport is also provided. It is especially good for those who live alone or for those carers/ spouses who need a break. Members attend once or twice a week, the service operates Monday to Friday. Access to the club is through the Princess Margaret Hospital's Older Person's Health Service via your GP. You are welcome to phone Faye at the Club if you have any enquiries – 03 960 3228

A Community Fun Day is being held on 6 June from 10am-2pm in the Holy Trinity Avonside car park. (Lychgate Close off Stanmore Road). This is an opportunity to come together as a community for a family day with giveaways, bouncy castle and fun activities.

It is also an opportunity for local groups to have a stall to either fundraise for their own needs or for them to raise awareness of their group. If you are interested in having a stall (no charge) please contact Rosalyn Deane 383-7980 or 021-294-6225 or email rosalynclinton@yahoo.co.uk We hope to see you there!

Frequently Called phone numbers:

Richmond Village Book & Post Centre	389-5112
Christchurch Hospital	
Main Number	364-0640
Patient Enquiries	364-0600
Christchurch Women's Hospital	
Main Number	364-4699
Patient Enquiries	364-4820
Princess Margaret Hospital	337-7899
Christchurch City Council	941-8999
Noise Complaints	941-8823
Graffiti Hotline	0800-824-433
Rubbish/Recycling/Composting	941-8830
Central Public Library	941-7923
Water and Sewer Faults	941-8302
Road Maintenance	941-8666

Are there any other numbers that you would like added?



Delta has been sharing space with the Recovery Assistance Centre for about three weeks now. This means that we have on-site representatives from WINZ, Civil Defence, Community Law and other organizations.

In addition to that, four flush toilets and showers are available for the community to use, 7am -7pm every day

Delta Inn has been postponed until July but instead every Wednesday and Friday we will be serving yummy homemade soups for lunch. Gold coin donation.

Delta Café is open Monday and Wednesday, 10am until 1pm and the food store is open from 10am until 2pm, Monday, Wednesday and Friday.

We have two English classes for new migrants and refugees starting up again after the holidays. Thursdays 1-2.30pm (gold coin donation) and Wednesdays 10am-12pm in the café. There is also a English playgroup at the Shirley Hub, Te Puna Oraka, 69B Briggs Road, Mairehau for refugee and migrant mums and their preschool aged children. For more details of these English classes please call Shauna on 389-0219.

Delta will also be running a new course for people who feel traumatized by the earthquake and would like to learn new skills for coping during this time. The course will begin in the second week of May.

For more information call Tony or Lesley, 389-0212 or Andrea or Shauna, 389-0219.