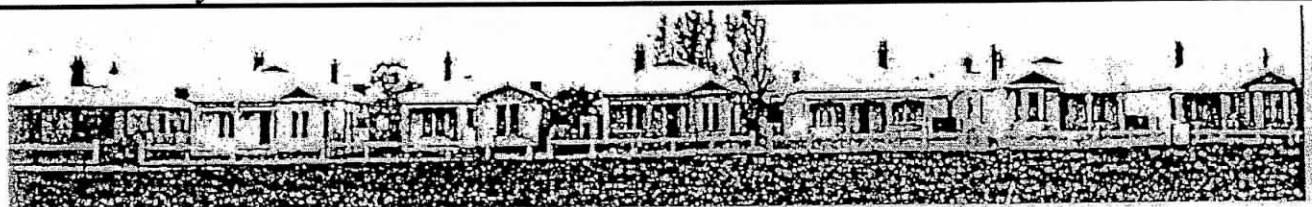


# Richmond Community News

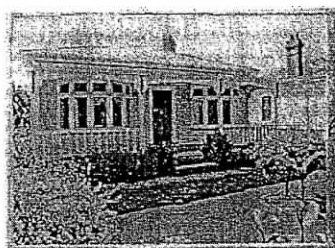
•February 2009 •

Vol 7 No1 Issue 66

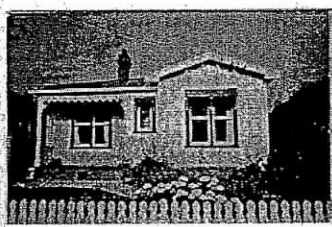
## Fortyseventh in the Historical Homes of Richmond Series



Chancellor Street 1920's



66 Chancellor



72 Chancellor



74 and 70 Chancellor

### Chancellor Street today

My last article (November 2008) said that State housing was introduced in 1936. I should have said it was re-introduced in 1936.

In 1905 the government introduced the Workers Dwelling Act which would allow for the purchasing of land and the construction of affordable homes for workers at what was to be modest rents. 34 designs were selected from 130 submitted by architects throughout New Zealand. Some of these homes were built in poorly selected locations away from public transport and at rents beyond the reach of many. A second act passed in 1910 increased the cost limits further still.

Richard Seddon, concerned at the number of homeless and substandard conditions, decided that the State should play a larger part in housing. Seddon came from England and had seen for himself good quality council housing available to low income families. These homes could be leased with the right of renewal or could be purchased outright with the proviso that upon the death of the owner, ownership would return to the State.

Seddon said it would give relief from profit hungry landlords, however, many workers with a bring home pay of three pounds per week, found the rents of up to 15 shillings a week beyond them.

When this early experiment was finished, over 640 homes had been built throughout the country. In Christchurch, some of these homes were designed by some prominent local architects including Hurst Segar, Cecil Wood, Barlow and England.

Three pockets of these homes were built in Christchurch in 1918 to 1920, one being in Chancellor Street. This small group of homes run between Julius Terrace and Shirley Road. They are still standing. Over the years some have been rented and some altered beyond recognition but recent years have seen a turn around with new owners restoring and putting back the lost character and charm.

Of the three pockets of these homes built in Christchurch, little remains of the other two, so Chancellor Street is unique in the fact that they are all still there and are in good hands. It would be interesting to know how many of these original 640 homes still exist throughout the country.

Following this initial building programme nothing happened until 1934 when 600 homes were built, then the following year the newly elected Labour government decided to make State rental housing available to everyone. State architects produced a variety of plans and private builders could contract to build them but the standard was so high not everyone wanted to.

Alan Williamson



BUSINESS EQUIPMENT NZ LTD

KM Business Equipment NZ Ltd 68 Fitzgerald Ave P O Box 10289 Christchurch  
Phone 03 366 2217 Fax 03 366 2235 Email [kmbusiness@clear.net.nz](mailto:kmbusiness@clear.net.nz)

DIGITAL COPIERS - PRINTERS - MULTIFUNCTIONALS [www.kmbus.co.nz](http://www.kmbus.co.nz)

# RICHMOND

WORKING MEN'S CLUB & M.S.A.

P.O.Box

26-036

Christchurch



Phone

389-5778

www.rwmc.co.nz

**WE ARE PROUD TO  
SUPPORT OUR COMMUNITY**

## PICCOLO COFFEEBAR

GOODFOOD / RICHMOND

270 Stanmore Road Ph 982 4538

100% Fairtrade Underground Coffee

Our famous Homemade Pies -

Sammies and sweets

Baked fresh everyday

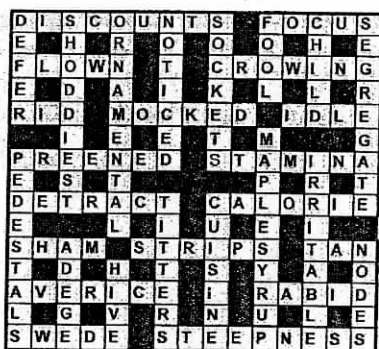
We do catering too



- \* Bought to you by a baker with 16 years experience
- \* Quality traditional style baking
- \* Huge product range
- \* Realistic prices
- \* Friendly service
- \* Self service cabinets, your choice in your own time!

All key ingredients to have you coming back for more

## Last month's solution



**The solution to this month's crossword  
will appear in next month's newsletter**

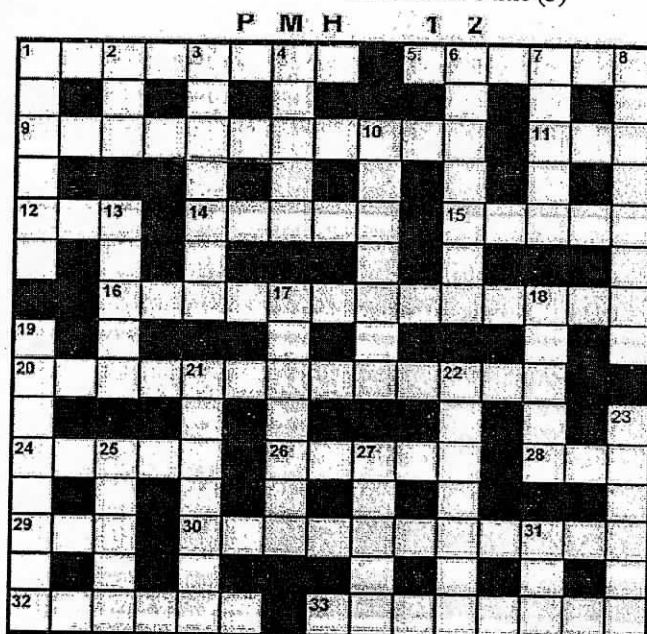
## Crossword Clues

### ACROSS

1. Envy (8)
5. Large bird cage (6)
9. Dangerous (11)
11. Cockney area East... (3)
12. C.I.A's c/war foe (1,1,1)
14. Counted up (5)
15. Whole amount (5)
16. Landing gear (13)
20. Amazingly (13)
24. Yellow/brown shade (5)
26. Ancient (5)
28. Underwater vehicle (3)
29. Jerry ... Lewis (3)
30. Idiots (11)
32. Middle .... of winter (6)
33. Ugly things (8)

### DOWN

1. Motorised water ski (3,3)
2. Woodsman's tool (3)
3. Fruit farm (7)
4. Horse (5)
6. Guest (7)
7. Spy (5)
8. Swiss mountain singer (8)
10. Eccentric person (7)
13. Beast (5)
17. Stripe tailed animal US (7)
18. Chasm (5)
19. Assaulted (8)
21. Blacken 970
22. Re-labels (7)
23. Belittles (6)
25. Censoring tone (5)
27. Lewd (5)
31. Baronet's title (3)



## SUN NING TAKEAWAYS

237 Stanmore road Ph 389-3113

Chinese meals Fish & Chips  
Hamburgers

### Hours

Tues-Wed: 11.30 - 2pm / 4.30 - 8.30pm

Thurs sat: 11.30 - 2pm / 4.30 - 10pm

Sun: 4.30pm - 8.30pm Mon Closed

PHONE ORDERS TAKEN

**SMALL FUNCTIONS CATERED FOR  
SUPPORT YOUR LOCAL  
RICHMOND BUSINESS**

## What's on in February

**Avebury House**, situated at 9 Eveleyn Couzins Ave. Richmond, is a community-run, low cost facility that has rooms available for hire. Situated in the midst of Avebury Park, the house has run several open days and social events. In addition to the amenities for hire, the following classes and activities are available:

**Gentle Exercise Class** - Mondays 1- 2pm  
(Wear comfortable clothing). Suggested donation \$3.00.  
This Sit and Be Fit class is a fun and healthy way to retain mobility, independence and meet new people.

**Richmond History Group**

Held on 2<sup>nd</sup> Wednesday of each month. No cost.

Next meeting Wednesday Feb 11th 4 - 5pm.

The History Group meets to share resources and research on items of Richmond's heritage. The Richmond Room, a resource room with displays, magazines and items of interest has been set up at Avebury. These resources are available to the public at no charge.

**Embroidery Group** - Mondays 1 - 4pm.

Beginners to advanced. Tuition available from a patient, experienced tutor.

Please ring Allison on 388-9377 for more information.

**Shirley Brownie group**

Meets at 6pm every Tuesday at Avebury House, excluding school holidays. Contact Sue on 352-5551 for details.

**Music & Movement for Babies and Pre-schoolers**

This popular group meets on Fridays 11am - 12 noon, excluding school holidays. Cost \$3 first child, \$1.50 for each subsequent child. For enrolment/enquiries ring Ursula on 332-0633 or just come along.

**Flax Weaving Courses with Ali Brown**

Feb 21 & Mar 28 9am - 4 pm.

Ph Ali Brown 326-7834 for registrations.

**Hugs All Round Quilt Project**

Wednesdays 1 - 4pm, enquiries to 381-6615.

**Tai Chi Class – Especially adapted for older adults**

Fridays: Advanced 12.15 – 1.15pm. Suggested donation \$5.00

**Music Together of Christchurch**

An internationally recognised and research-based programme; Song book and CDs included. Birth to age five. Avebury House, Thursdays 9.30-10.15am.

Contact Jennifer: 328-7787

[director@musictogetherofchristchurch.com](mailto:director@musictogetherofchristchurch.com)

[www.musictogetherofchristchurch.com](http://www.musictogetherofchristchurch.com)

**Sew good for you**

Tuesdays 1.30- 3.30 pm. New or experienced sewers welcome. Phone Ellen Graham 385-5976

For further information about facilities and classes etc. please contact: Lesley McMillan,

Community Development Worker:

Ph 381-6615.

I hope you had a great Christmas and New Year. My sons were both at home and we had fabulous weather so it was just perfect for me.

But I am concerned about 2009 because the global economic crisis is beginning to bite. Everyone's household finances are coming under strain as unemployment grows, house prices falter, and share markets stumble. Christmas also added financial pressure to families and many will continue to struggle throughout 2009.

The new Government recognises the economic challenges we face, and is focussed on finding solutions. As careful economic managers, we have put together a strong economic management plan which aims to provide fiscal stimulus that will lift us out of recession, and boost economic growth over the long term.

As part of our 100-days action plan, we have acted swiftly and decisively to provide temporary relief to those who are made redundant through our ReStart Assistance Package. We have passed legislation to reduce taxes which will put more money in New Zealanders' pockets from 1 April. And we have introduced a voluntary 90-day trial period for new employees to make it easier for small businesses to hire new staff.

We are bringing forward infrastructure spending to promote economic growth reforming the Resource Management Act, and getting better value out of government spending.

In early February, the Prime Minister will announce measures to provide relief to small and medium businesses. Later that month, the Government will host a summit on employment which will bring together leaders from businesses, unions, and the community to focus on preserving and creating jobs.

These are just the first steps we will take. Over coming months, you can expect to see a 'rolling mail' of economic initiatives that are pragmatic and affordable, and will help to build a higher growth economy over the medium long term.

The new Government knows that Kiwis are beginning to feel the sharp end of the global economic crisis. We are working hard to put our economic plan in place. And we will keep up the momentum to ensure that New Zealand families can combat the recession and look forward to the brighter future that you deserve.

Nicky Wagner National MP

[Nicky.Wagner@parliament.govt.nz](mailto:Nicky.Wagner@parliament.govt.nz)


# Nicky Wagner

NATIONAL PARTY MP

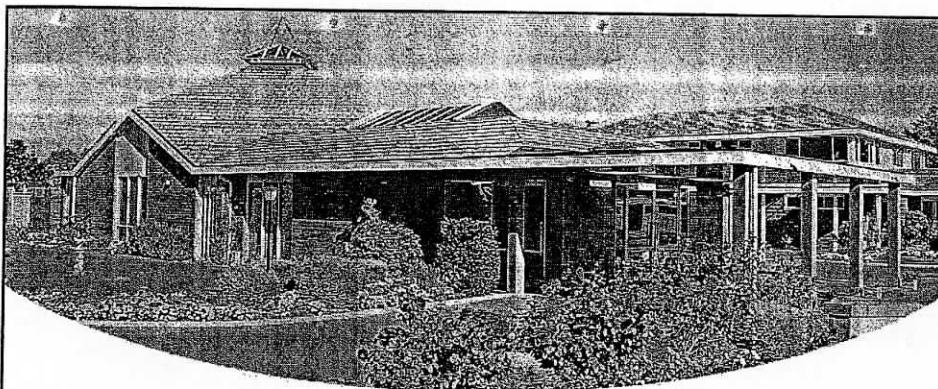
Available for appointments/contact my office:

[chchoffice@nickywagner.co.nz](mailto:chchoffice@nickywagner.co.nz)

Ph: 03 365 8297, 189 Montreal St, Christchurch







**J • O • H • N  
RHIND**

**FUNERAL DIRECTORS**  
*Since 1881 ... a continuing  
family tradition*

## John Rhind Funeral Directors

Part of the Richmond Community since 1881

Operating from our original site in London Street for over 120 years, John Rhind Funeral Directors today offer a modern chapel and homely catering lounge, and a team of caring professionals, including an after-care bereavement support person.

**Phone**  
**379-9920**  
24 hour assistance

John Rhind Funeral Directors,  
19 London Street, Christchurch.  
Fax (03) 366-7488

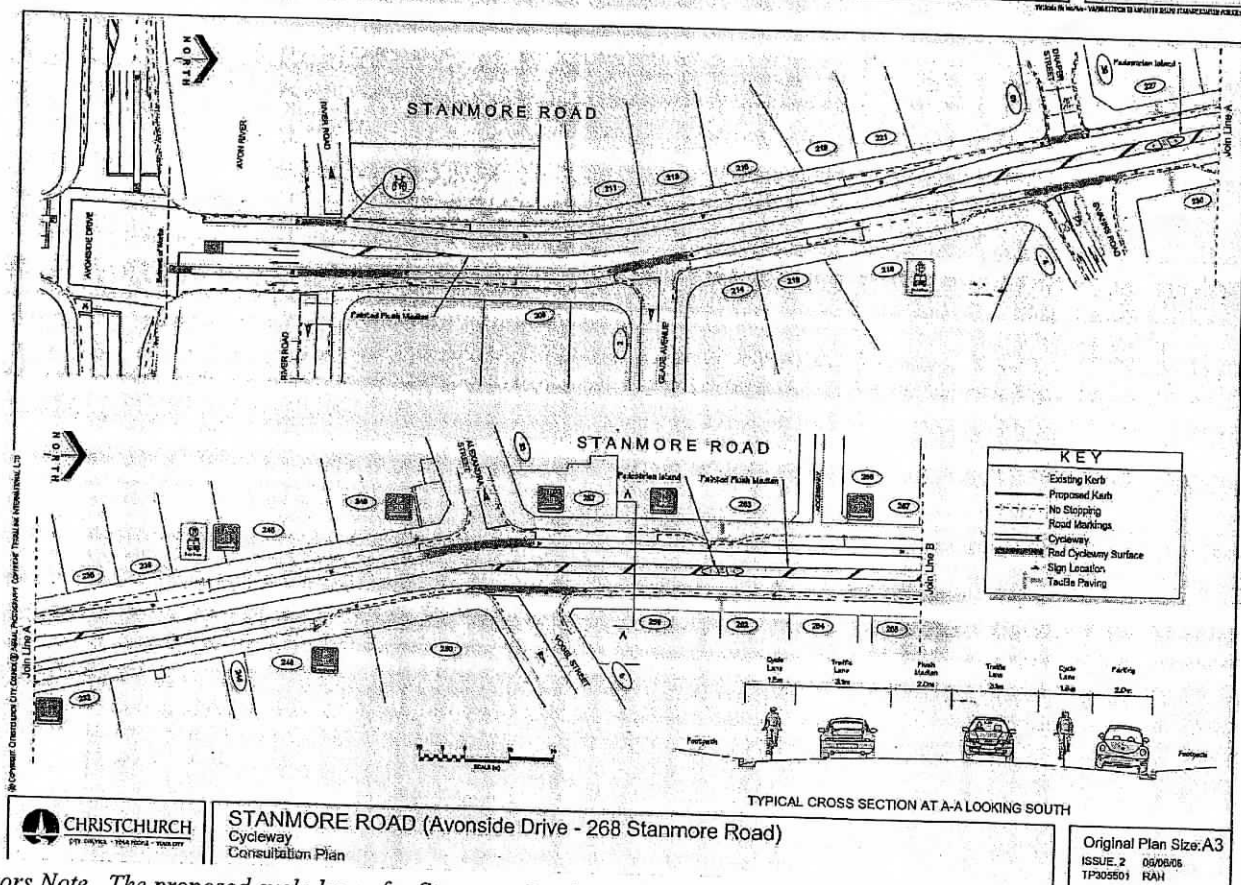
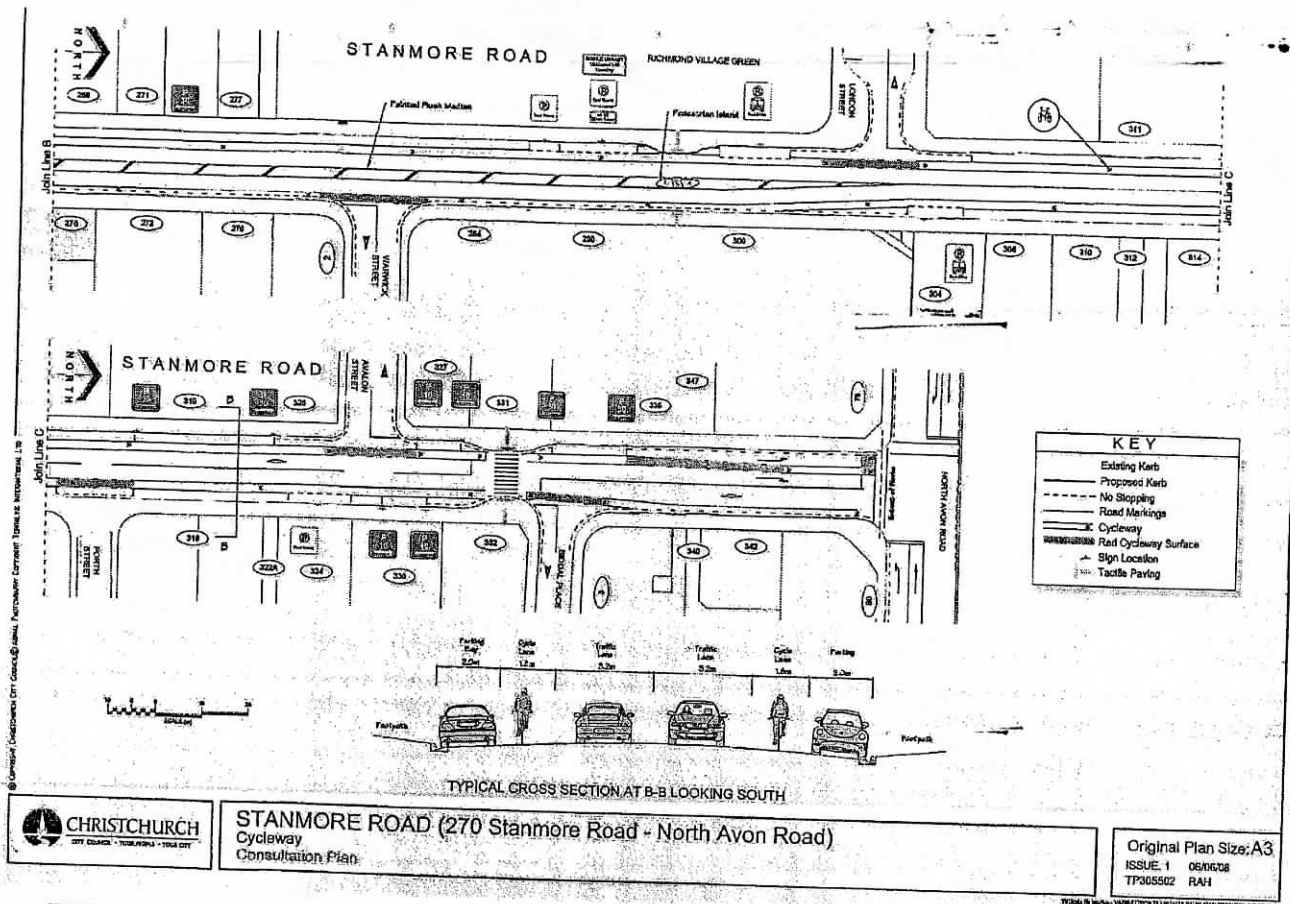


**Key features of the proposed Stanmore Road Cycle Lane are as follows**

- Inclusion of cycle lanes varying between 1.5-1.8 metres wide on both sides of Stanmore Road between Avonside Drive and North Avon Road.
- Maintain the "Collector Road" status of Stanmore Road.
- Complete construction within 2009/10 financial year.
- Adding a kerb build out opposite the supermarket to improve pedestrian crossing facilities at that point.
- Including tactile pavers at the pedestrian islands and pedestrian crossing.
- Removal of three existing kerb "Build outs" to make room for the proposed cycle lane.
- Three new pedestrian Islands added at various points between Avonside Drive and North Avon Road.
- Removal of two Bus Stops. One south of Warwick Street and one south of North Avon Road.
- Relocation of the existing Taxi Stand to the opposite side of the road to share the space with the Mobile Library.
- Removal of 36 existing car park spaces at various locations, Car parks in high demand areas are largely retained
- Two metre wide central flush median retained in some locations.

Attached is a diagram providing further information on the location of the cycle lane and other features.

Continued on next page



*"Editors Note The proposed cycle lanes for Stanmore Road. For what purpose? The cycle numbers using Stanmore Road are very small and to remove two bus stops and thirtysix parking spaces in the heart of the commercial area is in my opinion extremely unwise. All the businesses will suffer not to mention the inconvenience for bus patrons. If space is required, remove the median strip and pedestrian rests from the centre of the road, that will gain a metre and a half. Replace the pedestrian rests with zebra crossings a feature everybody recognises."*

## Delta Community Support Trust



105 North Avon Road, Richmond

Phone 389-0212

### Footprints Cafe @ Delta

Open 10am - 1pm Monday & Wednesday.

Coffee, tea and food

### Foodbank

For those living in the local area. Open Mondays, Wednesdays and Fridays, 10am - 2pm

### Budget Advice

Budget advice available on Tuesdays

### Delta Inn

Come and enjoy an excellent cooked meal in a friendly atmosphere. Fridays 11am - 1pm (meal seated at midday) \$3 donation

### Craft Group

A small friendly group who meet on Monday and Thursday mornings from 10am - 12noon to chat, participate in various crafts and drink coffee!

### Empowerment Courses 2009

- **Live to the Max** - a practical goal setting course
- **Explore!** - a course for those needing to get out and about more and want to think about making changes to their lives. We spend one day a week for 10 weeks experiencing different places around Christchurch and getting to know each other and ourselves better. Starts **Wednesday 11 or Thursday 12 March**
- **Healthy Living** - a practical course designed to help you live more healthily involving setting goals for yourself, cooking classes, easy exercise and information about health and nutrition.

Phone Tony, Andrea or Marlys on 389-0212 or 389-0219 for more information or to enrol.

### Delta Community Church

Meets Mondays 7pm, cuppa available from 6.15pm. Come along to a friendly church with a difference! Phone Tony on 3890212 for more information

Christchurch Star October 10 1894

### RICHMOND AMATEUR SWIMMING CLUB

The committee of this club met in the schoolroom last evening; present—Mr H. L. Armitage, captain (in the chair) and Messrs C. S. Howard, G. Stevenson, A. S. Andrews, K. Bassett and G. Milne. It was resolved to hold the annual exhibition of water sports on Saturday, Dec 8 and to send a water polo team to compete at the Sydenham club's carnival on Nov 17. The following new members were elected:—Messrs W. S. Wharton, J. B. Norris, C. R. Williams, C. Allen, and J. G. Faulconer (late of the St Albans Club), G. A. Pascoe, B. Harris, C. W. Isitt, T. B. Boulton, L. D. Armitage, G. L. Tacon, B. Arrowsmith, W. Bailie, D. M'Kee, W. M'Clurg, F. Andrews, M. Bunt, A. Bunt, H. Whitley, D. Buchanan, E. Buchanan and W. Kerr. It was resolved to hold several scratch races at the opening of the season on Saturday afternoon.

### Meditation Group Thursdays

2nd and 4th Thursday, 7.30 - 8pm Flesher Room.

Starting February 12th (ongoing)

Simple, guided meditations for anyone and everyone.

\$20 for 8 weeks. Contact Jill 383 1843

### Struggling to find your dream home?

That's my job - Call me today and let me do all the hard work



#### Gary Hughes

Property Consultant

Telephone 03-381-2361

After Hours 03-386-1370

Mobile 0275-630-994

Email: gary.hughes@harcourts.co.nz

#### Free market appraisal

on your home with this copy of the Richmond Community News



Richmond area property consultant since 2005

### Advt

House cleaning job wanted by reliable, efficient and honest lady. I'll vacuum, wash floors, dust, clean bathrooms/loo. \$25 per week. Excellent references. Phone Nicola 386-1118.

## Bill Cornelius

A.R.E.I.N.Z.

RICHMONDS

Resident

Real Estate Agent

28 Years Property Marketing

Experience working for you

South Island Realty Services Ltd M.R.E.I.N.Z.

Telephone 3556444 Mobile 027 4344234

e-mail: billcornelius@xtra.co.nz

P.O. Box 21393 Edgeware Christchurch





## Keeping Christchurch jobs the priority

As we head into February, the Christmas break is behind us and much of the focus is on what will be a tough year for our economy and nation.

Prior to Christmas, my first priority as your Member of Parliament was to meet with senior Christchurch business and union leaders and offer to do all I can to assist with retaining jobs in our city. Many of us can remember how high unemployment eats away at the social fabric of our community.

Opposition leader, Phil Goff, has made clear that Labour will support the National/Act government on measures that assist with keeping jobs. Similarly, the government is stating that the economy it inherited from Labour leaves New Zealand in better shape than most nations to come through the international recession. Just how long and deep it is rests in large part on the United States.

Few of us can fail to be inspired by President Barack Obama. Our hopes are he can provide the leadership that delivers real change. I think he said it all when he stated: "...a nation cannot prosper when it favours only the prosperous."

In my maiden speech to Parliament in December, I spoke of our electorate, Christchurch Central, including some of the country's wealthiest streets, but also being home to some of our nation's poorest people.

*"Some of the housing stock in Christchurch Central is shameful. Too many houses are best described as wooden tents. They are among one million New Zealand homes that still have no insulation or are not properly insulated. This is unacceptable for a first world nation in the 21<sup>st</sup> century, especially in a city where winter day temperatures can numbingly remain in single figures. To be warm in the place you call home is a basic human right. The Labour-led government forged an agreement with the Green Party to address this through a 15 year programme. I say to the new government that there are few other initiatives with so many benefits – lower power bills, less pressure on the health system from cold people getting sick, reduced demand on our energy system and on our planet. The New Zealand Council for Sustainable Development has just reported that nearly \$5 billion in energy savings could be had in the next decade through insulating every home; that's \$300 per household every year.*

*This is infrastructure every bit as beneficial as roads and broadband. And with building firms laying off staff in the face of recession, I say now is the time to insulate New Zealand homes, starting with Christchurch.*" (See Brendon's maiden speech at <http://www.youtube.com/watch?v=IQ2LVV-sR3s>)

An economic summit is now planned by the National/Act Government on February 27. There

will be no shortage of proposals but I hope there will be bipartisan agreement to insulate Christchurch homes. This is a policy that would keep people in jobs and warm and healthy as well.

**Brendon Burns**

**MP for Christchurch Central**

**Brendon Burns**  
Member of Parliament  
for Christchurch Central

Contact my electorate office  
Monday-Friday 10-4pm  
Level 3, 103 Worcester Street  
Phone: 377 8840

**Working for your future**

NEW ZEALAND **Labour** NZ

## MEMORIES OF RICHMOND IN THE WAR YEARS

As a follow up to our very successful "Schooldays in Richmond" held last year, The Richmond History Group started this year with an invitation only gathering with a different theme. Twenty older adults enjoyed reminiscing about air-raid shelters, black out curtains, ration books and what could and what could not be bought in shops. We laughed at the stories of the home guard (which met at the Richmond School on Sunday mornings) and perused photos and displays. Our visitors were met at the door by present day N.Z. army personnel and were served afternoon tea by hostesses in appropriate attire. Photos and a video were taken and the Richmond room was open for viewing, our historian, Christine, recorded everything for our archives



## New name and new ministry for church

The Shirley Methodist and North Avon Presbyterian churches have been undergoing a period of transition and change. For the past year the two congregations have been working and worshipping together and in July 2008 signed a covenant making the arrangement permanent. A new minister commences at the church in February. Rev. Joohong Kim, will be inducted on Tuesday 3<sup>rd</sup> February and begins immediately, taking his first worship service on Sunday February 8<sup>th</sup>. The combined Parish will now be known as Crossway Community Church.

The church is presently using the Presbyterian Church building, on the corner of Randall and Petrie Streets and most of the church and community groups which used the Shirley Methodist church (opposite The Palms) have now moved premises. The Methodist Church buildings are showing their age and would need a significant amount of money spent on them to bring them back to a good state of repair, so it has been decided to sell this site. The Palm Cottage drop in centre and used clothing shop will remain there until the property is sold.

The two congregations have merged extremely well and many new friendships have been made. Rev. Joohong Kim is an English speaking Korean, who has just completed his practical theological training. This will be his first appointment, although he comes with many years of lay ministry experience. Since leaving Korea, he has spent three years in the United States and has now lived in New Zealand for eight years. He is looking forward to working, together with others, to lead the church and serve the community. He believes that teamwork is the sign of a healthy church because it values the diverse and rich gifts of its members.

Services at Crossway Community Church are held at 10.00 a.m. on Sunday mornings, along with a Sunday School and Youth Group. Weekday activities include a Playgroup and Toy Library, Girls' and Boys' Brigades, and Women's Fellowship. The Church Office may be contacted on 385 3473.

**Closing Date for copy and advts. for the  
March RCN issue is  
20 February 2009**

**Idea**

Well we finished the year with a bang and here we are back into it. We finished off a good year with a visit to the "Waiora Trust" flower show where we were awarded a 1st, 2x 2nds and a 3rd prize for our entries. We were rapt. Ferrymead were also winners.

Then we won the "Sunsmart" poster competition, so a big Thankyou to our models who took part in being photographed and for having the proper gear with them. Next was the end of year luncheon for service-users and family and friends. About 35 people enjoyed a great "Spit Roast" lunch followed by coffee and cake. Very relaxed and enjoyable. People present were awarded prizes for the Sunsmart comp that day, so now they have smart new water bottles etc.

We did plan a barbeque for Craig and team, but sadly due to the weather it was an indoor one.

A staff barbeque was very much enjoyed by those who attended at Richmond base, a nice casual enjoyable evening. Thanks to Kate who shopped and Pam who did a lot of the preparation.

Thanks to everyone who encouraged the Camera Club group by purchasing Christmas cards. Look out for big developments this year with them. Also those who purchased cleaning goods. These extra funds are great for providing the little extras for activities. The card money goes back into materials for cards ie; good quality envelopes etc so keep it up and thank you for your support again in 2009.

Remember the cleaning goods are cheap but quality so you are the winners. Now it's back into it again..... full steam and exciting times ahead. Thank you to the Richmond team for working together to make everything work well. Janice

Does anyone have any information on when the old Richmond swimming baths in Pavitt St opened? photos would be appreciated. Please contact Avebury House Phone 3816615

### **Sew Good for you Tuesdays 1.30 - 3.30 pm**

Would you like to create your own personal, original gifts for presents? If so, this is the class for you, regardless of whether you have sewn before, or are totally new to sewing and maybe have never used a sewing machine. The class is structured so that all levels of skill are catered for. In this class you can make soft toys, wall hangings, fabric brooches, pretty hostess aprons, fancy scarves, cushions, stylish bags, a smart jacket for your dog, or something of your own choosing. Sewing machines are available at Avebury House or you may bring your own machine.

To enrol please phone Ellen Graham on 385-5976 or contact Avebury House on 381-6615.

#### **Disclaimer**

Views and opinions expressed in Richmond Community News are not necessarily those of the Editor or Avebury House Community Trust. No responsibility is accepted for incorrect information contained in advertisements or editorials. Advertisements for publication are accepted in good faith and publication of an advertisement does not imply endorsement by Avebury House Community Trust. The Richmond Community News is published monthly by Avebury House Community Trust, 9 Eveleyn Couzins Ave, Richmond Christchurch. Telephone 381-6615 or E-Mail avebury@xtra.co.nz.