

RICHMOND

COMMUNITY NEWS



Avebury House: 9 Eveleyn Couzins Avenue

Phone: 381-6615

Email: rcn@aveburyhouse.co.nz

Vol. No 20 No. 9

Oct 2022

Issue 168

Spring Fair

Come to the Fair! Avebury House & Richmond Community Garden

We are so excited for our combined Spring Fair/Heritage Festival event on Sunday October 16th! It feels like ages since we've had a proper big event, and this won't disappoint! On the Richmond Community Garden side they have the Carboot Sale, Buskers, the Repair Revolution, the RCG Little Shop with produce and preserves, food stalls and more. At Avebury House we have an open day as part of the Christchurch Heritage Festival, with an exhibit 'Richmond in the News'; we'll be serving our classic Devonshire Tea; and for the first time, we'll also be joined by the fabulous Avebury Vintage Market on the front lawn! Plus of course more food and beverage stalls for hungry lunchtime visitors. Please bring cash for purchases. It's going to be a massive day with something for everyone, and what a great way to finish the school holidays!

Sunday October 16th, 10am - 2pm

Avebury House, 9 Eveleyn Couzins Ave, and 46A Vogel St

The Christchurch Heritage Festival runs from Oct 7 - 24th. There are loads of amazing free or low-cost events, check out the full programme here:

www.ccc.govt.nz/news-and-events/whats-on/programme/72



REPAIR-A-THON WEEKEND!

Richmond Community Garden is planning a marathon repair event to celebrate International Repair Day on October 15; plus we'll be at the Richmond Spring Fair on Sunday October 16! Our usual band of happy repairers will be available, and we'll have some upcycling opportunities too! Everything from electronics to shoes to crockery - if it needs mending, bring it on down! Reduce, Re-use, Repair!

10am-2pm Saturday 15th AND Sunday 16th October at the Riverlution Eco Hub, 46A Vogel St.

<https://fb.me/e/1of2OL6t7>



Richmond Community News is brought to you by Avebury House Community Trust and the following people:

Editorial: Tanya Didham.
Layout: Kristine Spoor.

Many thanks to our team who deliver the RCN to 2800 households and businesses throughout Richmond.

The RCN is now available online:
www.aveburyhouse.co.nz/newsletter.html

Contact us at: rcn@aveburyhouse.co.nz or ring Avebury House: 03 381 6615.

Disclaimer: Views and opinions expressed in the Richmond Community News are not necessarily those of the editor or Avebury House Community Trust. No responsibility is accepted for incorrect information contained in advertisements or editorials. Advertisements for publication are accepted in good faith and publication of an advertisement does not imply endorsement by Avebury House Community Trust.



**Allan the Appliance Guy will collect
for free scrap metal, old appliances,
computers, dvd players etc.**

Call him on 027 756 2718.



The Wit of Sam

I was once attacked by a group of street mimes. They did some unspeakable things to me.

• • • • •

When I was young I was poor. But after years of struggle, I am no longer young.

• • • • •

My teacher always said not to worry about correct spelling as we have auto correct. And for that I am infernally grapefruit.

Illustration by Stephanie Terris



'SPRING IN JAPAN' Kids Holiday Programme

These School Holidays, The Children's Imagination Academy is bringing Japan to you!

Small caring groups and super fun days!

Book here www.imaginationacademy.nz/holidays

Monday, 3 Oct: Kite Making & Origami

Tuesday, 4 Oct: Sushi Making & Forest Bathing

Monday, 10 Oct: Lil Temple Cubbies & Japanese Language

Tuesday, 11 Oct: Karaoke, Sumo Sock Wrestling & Dress-ups!



Cooking Club with Bex

Imagination Academy's Cooking Club for kids is coming to Avebury House in term four! Look out for our little foodies with their fabulous creations!

Tuesdays, 9:30-11:30am starting October 25.

For more info:

www.imaginationacademy.nz/cook

The New Gordon Prince

By Tanya Didham

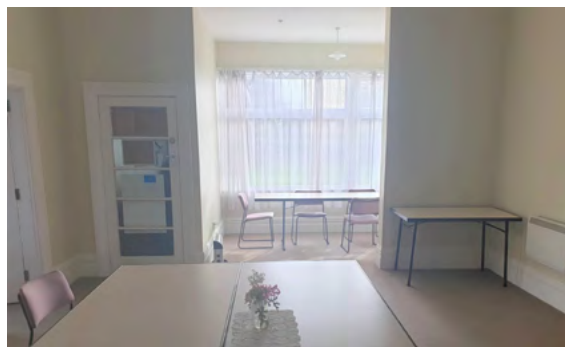


Taken in June, just before the Gordon Prince got a new paint job.



The newly painted Gordon Prince.

As part of our commitment to restoring Avebury's historical charm, we have recently refurbished one of our downstairs rooms. The Gordon Prince Room had been a poor cousin in relation to the others, but with a small grant from the Department of Internal Affairs we have re-painted, re-carpeted, and added new window treatments. It's like a new room! The Richmond School memorial boards are still with us, now moved to more fitting locations near our upstairs archive room. A big thank you to all the contractors, including local painter/decorator Kevin Crook and curtain maestro Mary Hollander. The paint was kindly donated by Maiden Group, and we got a great deal from Robby at Carpet Court. Thanks also to Matty, Sam, David and Hire-A-Hubby for moving those precious school memorials!



The alcove before.



The alcove with new curtains!

Matty, David and Sam wrangling the Richmond School memorial board into its new position.

Come to Foraging Corner!



Whether you're a plant expert or complete beginner, Inga from The Foraging Corner is there to guide you on a foraging walk. Along with identifying wild foods, Inga talks about how plants grow, potential medical uses, and why foraging is good for our health and wellbeing.

Brought to you by the Richmond Community Garden, all foraging walks begin at the Fungi Farm at the bottom of Eveleyn Couzins Ave. We'll be exploring in the nearby red zone and will harvest a salad to share back at the Riverlution Eco Hub, along with some lovely foraged tea!

Koha is welcome, but not a deal-breaker. We encourage everyone who can to walk, cycle or bus to the event, to minimise our impact on the environment. In case of rain, we'll postpone to the following week. Find out more here:

<https://fb.me/e/2jGkHhOoB>

Find a date to meet up at the Fungi Farm:

Wednesday 12th October, 1pm till 3pm

Saturday 12th November, 10am till 12pm

Saturday 10th December, 10am till 12 pm



The Richmond Files

In 2020, someone delivered a sheaf of papers to Avebury House, for the history collection. One document was “an address given by Mr H. de Rie Flesher to the [Richmond School] PTA on 16th October 1956”. Along with Mr Flesher’s talk it includes residents’ recollections of the school and surrounding suburb. Hubert Flesher (1901-1989) was the son of James and Margaret, and the third generation of Fleshers to live at Avebury. It was his grandfather William who built the house in 1885, and it was Hubert who sold it, along with 8 acres, to the government in 1945. Unfortunately we did not get the name of the document donor so have been unable to thank them for this material, but our volunteer David Hollander has carefully transcribed it and added it to our website. Follows a brief, abridged excerpt from Hubert’s talk:

“I will tell you something about Richmond because there are folk who have lived in Richmond all their lives and who know little or nothing about the earliest days of Richmond. The Flesher family settled here in the early days. Of course, as you know, the first name of Richmond was Bingsland. It was named after Morris Bing. Richmond itself got its name from Richmond Hill in London. According to the maps of Captain Thomas, who was Canterbury’s first surveyor, the land along the river opposite Patten Street and Morris Street, was mainly sandy, and it was covered with toot and fern. Proceeding further upstream, it became more and more swampy. At the corner of Vogel Street and Warwick Street, there used to be a lagoon. That was on the Nicholson property. When the drainage scheme got under way, that lagoon was drained and eventually became a piece of No Man’s Land and in due course the Nicholson family, who occupied it for more than forty years, obtained a title to it. There used to be quite a lot of sandhills round about. We know there was one where Mr. and Mrs. Smith live, now known as “The Marsh”. The old Flesher home was built on another one.

The highest of them all was up near where the Presbyterian Church is in Randall Street where Howard had his cottage. The central part of Richmond was just a great swamp with several creeks winding through it. It stretched northwards to Marshland. There was



Hubert Flesher by the Avebury gate, circa 1909

quite a bit of peat about and it was covered with toi toi. Along the river, where Lois Place is now — that is, opposite Morris Street — there used to be a Maori Camp. This was on what later became the Bassett property, and there is still burnt sand, burnt whale bones and shells of all kinds. Mr. William Bassett had in his possession several pieces of greenstone that were collected there. On the river bank opposite Morris Street there used to be a sandy beach and that was where my family and a lot of other Richmond people learned to swim. The later generation would swim in the holes by the mouth of the Dudley Creek. Even in those days there were tragedies and I think you will find that at the entrance to the Avonside Churchyard there are the names of four children who were drowned in those days.”

The original typescript is now housed in the Richmond History Group collection at Avebury House. David Hollander Richmond History Group, 2021. You can read it online [here](#).

Created for Joy

By Hafez

I sometimes forget
that I was created for Joy.
My mind is too busy.
My Heart is too heavy
for me to remember
that I have been
called to dance
the Sacred dance of life.
I was created to smile
To Love
To be lifted up
And to lift others up.
O’ Sacred One
Untangle my feet
from all that ensnares.
Free my soul.
That we might
Dance
and that our dancing
might be contagious.

*Hafez was
a Persian
lyric poet
who lived
in the
1300s.
Persia’s
most*

*influential writer, he has
inspired many other poets,
artists and musicians and
his works are still part of
everyday life in Iran and
Afghanistan. He also inspired
European writers such as
Goete, Yeats and Thoreau. In
Iran, he is commemorated on
October 12th - Hafez Day - a
time for people to gather and
recite their favourite poems.*



New GM at Delta Community Support



We welcome Mike Stanley to the General Manager's role at Delta Community Support Trust. Highly recommended to Delta as a cheerful, pastoral, and generous person, Mike brings a diverse range of skills and experience from leading teams in education and business, to teaching, and participating in community ministry, and working with people

from all walks of life. Originally from Port Chalmers near Dunedin, Mike began his working life as an electrician in a family business; he then served 21 years

as a professional firefighter with the New Zealand Fire Service, and following that, Mike retrained as a teacher! He taught at Ōtātara School in Invercargill before heading to South Korea and Vietnam where he lived and taught for five years. In Vietnam he connected with church friends and was privileged to work in various mission outreaches in the community. Returning to New Zealand in 2016, Mike started up a property maintenance business in Queenstown, then two years later became Principal of state-integrated Christian school, Kingsview, in Frankton. In February 2021 Mike and his wife moved to Christchurch to be nearer family, and he is excited to join Delta Trust. Says Mike, "I look forward to building relationships with all involved in the Delta family, as we continue to serve our community together."

Nau mai, Mike!

Tuition

Reading, Writing, Spelling, Maths (Y1-Y12)

Qualified local teacher, individual programmes, great results.

P: 021 197 8383 or

E: katharineabeaumont@gmail.com

Clarinet, Sax, Flute, Guitar, Bass, & Piano—Experienced local teachers. Phone Nicola & Ivan (03) 385-3856.

Nature & Forest Therapy

Supporting wellness and health through gentle guided walks in Nature, based on the Japanese nature therapy known as Shinrin-yoku or forest bathing.

Next walk: **Thursday 27 October 9:30am – 12:30**

Location: Mitchell's Track, opposite Sign of the Kiwi. Suitable for all ages, we'll go at a leisurely pace with many pauses. Maximum 10 people. Waged \$35 Unwaged \$15.

To book or enquire, phone Kathy **0226507896** or Helen **0274080336**, or email helenfrancis1983@gmail.com



COMPLIMENTARY HOUSE CLEAN

List and sell your property with Charlotte and receive a complimentary professional clean of your home prior to settlement, saving you a task and ensuring your move goes as smoothly as possible.

At Bayleys we are committed to providing a personable and stress-free experience from start to finish. Quite simply, we deliver a premium service.

Get in touch now for an obligation free appraisal of your property.

"I cannot recommend Charlotte enough, from the moment we signed up to settlement of our property, she continually communicated with us. Her knowledge and understanding of the process was exceptional and made us feel at ease."

- L Slater



**PROUD TO BE A
RICHMOND LOCAL**

Charlotte Heaslip

027 386 0667

charlotte.heaslip@bayleys.co.nz

WHALAN AND PARTNERS LTD, BAYLEYS, LICENSED UNDER THE REA ACT 2008

BAYLEYS

ALTOGETHER BETTER

Residential / Commercial / Rural / Property Services

Mind Yer Language: The Queen's Unglish

By Tanya Didham

When Queen Elizabeth II ascended the throne in 1952, like most of the world, New Zealand was a very different place. And our language was different too. We were still deeply embedded in the cultural cringe of being a 'backwater colony', and we expected our politicians, our presenters, and our actors to sound like Brits. Our unique 'Niew Zilland' accent was formed as early as the 1860s when a large cohort of children with various local and European dialects all began school. We had our own Great Vowel Shift, a flattening out, with all our vowel sounds moving forward in the mouth. 'Pan' became 'pen', 'pen' became 'pin', 'pin' became 'pun'. So 'Pat had the best pen', would sound to a British person like, 'Pet hed the beast pin'. But we didn't like hearing our own voices on the 'wireless'; and television presenters, right up until the 1980s, had speech training to cultivate the 'koiwoi' accent out of them.



Lynn of Tawa

Radio began here in 1921 - and recordings of old announcers could be easily mistaken for Britons. Though sadly no New Zealand-made radio archives exist pre-1932. In the early days, radio stations did not have recording equipment, which was

expensive, they were merely live broadcast stations. But we do know that right up until the 1980s, radio voices still sounded either posh, or like a kiwi version of Casey Kasem.

An attitude shift came in the 1980s though, even if we were laughing at Lynn of Tawa, Billy T. James, and McPhail & Gatsby's 'Jeeze Wayne' sketches. We still associated a broad NZ English accent with low education, and maybe even low moral standards. Something of that snobbish-ness still remains, but overall we probably now prefer our presenters and politicians to speak General New Zealand English - the dialect most of us speak.

A recent poll by a travel website put our accent at the top of the sexiest list. We couldn't stop talking about it, but deep down we didn't remotely believe it. We can accept the way we sound, but 'sexy' is a step too far. And it still sounds funny. A few years ago an RNZ presenter recalled his friend's British mother who when travelling to NZ, was trying to make sense of an airport announcement telling her to: Go to the Mystic Chicken Disc. After a local translation she discovered she had to go to the Domestic Check-In Desk.

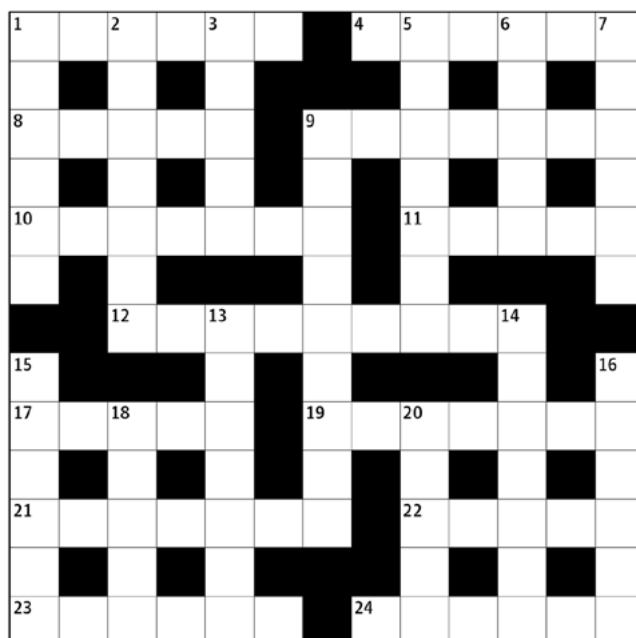
Puzzle Crossword

Across

1. Say again (6)
4. Narrow stretch of water (6)
8. S. American animal (5)
9. Think well of (7)
10. Crossing (7)
11. Small boat (5)
12. Surrounded (9)
17. Soak in liquid (5)
19. Transport hub (7)
21. Copy (7)
22. Latin dance (5)
23. Consuming (6)
24. As one (6)

Down

1. Tell story (6)
2. Appease (7)
3. Collect (5)
5. Current (7)
6. Fruit of oak (5)
7. Subjects (6)
9. Take turn about (9)
13. Military rank (7)
14. Small amount of liquid (7)
15. Aim high (6)
16. Water's edge (6)
18. Oust (5)
20. Gum (5)



Solution to July Crossword

Across: 1. Respite 5. Chapter 10. Shoe 11. Aquamarine 12. Edit 13. Operator 14. Paramedic 16. Penny 17. Pedal 19. Agnostics 23. Ephemera 24. Acid 25. Telepathic 26. Hike 27. Isotope 28. Trident

Down: 2. Echidna 3. Pleat 4. Trainee 6. Hamper 7. Permanent 8. Einkorn 9. Autobiography 15. Amazement 18. Express 20. Officer 21. Chicken 22. Decamp 24. Ached

Bugs in the Alley



By David Duffy for We Are Richmond

The ugly eyesore which was the alleyway fence linking Vogel Street with Eveleyn Cousins Ave has been given a facelift by groups of Richmond families who, over the course of three painting events, have produced a mural featuring fun plants and bugs. A number of mayoral and local body candidates attended the last session, adding their artistic talents to the 50m long mural. Residents were able to have an informal chat with the candidates, while adding their personal touches to the painting, and enjoying a sausage off the barbecue!



Give Us A Sign!

Residents may be wondering where the Richmond Village sign went and when it is going to be replaced. The Richmond Residents' and Business Association decided some 15 months ago to take the dilapidated, out-of-date signs down and replace them. Unfortunately, we were plagued with delays caused by availability of time and resources, not to mention the shadow cast over everyone by the Covid epidemic. However, we are happy to report that the new framing is currently being worked on, and we are looking forward to the reinstatement of a bright new set of signs!

More ways the collective known as We Are Richmond are contributing to making Richmond a brighter place!



Left: Maarten fabricating the new metal frames at the Maiden Group workshop. Right: The old frame waiting for new signage.

Come along to the informal We Are Richmond (Richmond Residents and Business Association) meeting at The Richmond Club on: Tuesday, Oct 25 at 7pm. Learn about and share local issues, discuss and create solutions together, and get involved! We welcome residents and new members at any time, all are welcome.



Voting for local Councillors, Community Board and Environment Canterbury Councillors closes at midday, Oct 8th. Post your free return envelope by Oct 4th to ensure it reaches them on time.

For information on who is standing in your area, check [here for Council](#). And [here for ECan](#).

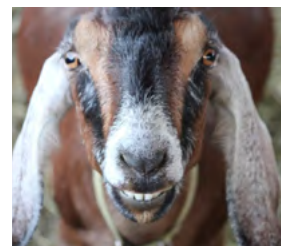
Haiku from the Small White Teapot

isolation
even the mosquito
has a limp

Julie Bates

whatever is it thinking?
the pale-eyed stare
of the backyard goat

Judith Walsh



What's on in Richmond



AVEBURY HOUSE,
9 Eveleyn Couzins Avenue.
Phone (03) 381-6615
The office is open Mon to
Fri from 9 a.m. to 1 p.m.

Monday

Men's Shed: Contact John at 022 5891141 or Ian at 027 555 8368.

Children's Imagination Academy: one-day school from 9am.

For more info email:

hello@imaginationacademy.nz

Chit chat Club: 10–10:30 a.m.

The Chit Chat Club is for the older adults (55+) in our community to get together and have a catch up.

Gentle Exercise:

10:30–11:30 a.m. Gentle exercise class with a tutor who guides you through an exercise routine designed to keep those muscles moving! \$5/session.

Richmond Community Garden:

From 9:30 a.m. onwards. We welcome volunteers to help create a beautiful veggie garden for our community to enjoy! Also meets Wednesdays and Saturdays.

Tuesday

Yoga: 9:00–10:00 a.m. Join us for a good stretch! Beginners welcome. \$8/session.

Tai Chi: 10:30 a.m. \$10/session

Small White Teapot Group: Haiku group meets every 4th Tuesday of the month at 12pm.

Pilates: 6:00 p.m. \$8/session.

Wednesday

Write Your Own History: Every 2nd and 4th Wed of the month. 10 a.m. –12 noon. Please call to confirm.

Hugs All Round Quilting Group:

1–3 p.m. We make quilts for children who need an extra hug. Join us to learn more about quilting; this includes machine and hand-sewing.

Pilates: 11am & 6pm. \$8/session.

Stress Release: 7:30pm, guided relaxation & tension release.

Contact Kathy **022 6507896**.

Thursday

Yoga: 9:00 a.m. Beginners welcome!

Pilates: 11 a.m. \$8/session.

Yoga: 6–7 p.m. \$8. Evening yoga. Join us for a good stretch!

SOUL STAR TRIBE: beginner belly dance classes 5:30pm Tuesdays (CWEA, 59 Gloucester Street, City Centre), and 10am Saturdays from (The Chrystal Palace, 12 Chrystal Street, Richmond).

\$10 casual, concession cards available. For more information, please phone Samantha on **027 6525 993**.

CROSSWAY COMMUNITY CHURCH

North Avon Community Centre. 101 North Avon Road (entry off Chystal St)

Sunday Services: Every Sunday at 10am

Family friendly with children's programmes.

For more information you can find us on

Facebook: www.facebook.com/crosswaych/

SHIRLEY RECREATIONAL WALKERS

Mondays & Thursdays:

Meet at Shirley Community Centre site, cnr Shirley Rd & Chancellor St, 9:30 a.m. Walks around Christchurch. All ages welcome.

For more information and a copy of the programme, contact Sue **(03) 981-7071** or **027 775-4635**.



DELTA COMMUNITY TRUST,
101 North Avon Road
(Entrance off Chrystal St)

Ph: (03) 389-0212, Free phone 0800233582

Foodbank: Contactless deliveries and car pickups only are now available. Monday, Wednesday, Friday (except public holidays) 10am–2pm. Please phone first.

Monday Café: Now open. \$2

Hot Toasties and 20 cent Tea and coffee. Every Monday except public holidays. 10am–12.30pm

Friday Drop-Inn café: Every Friday except public holiday. 10am–12.30pm. Hot Soup and scone or fried rice only \$2, tea and coffee 20 cents.

If you are isolating at home with Covid and need assistance please call the Covid Welfare line 0800 512 337.

North Avon Community Centre

ESOL/English Class: Now running every Wednesday 10am–12.30pm (except Public & School holidays). \$3 Fee.

Delta International Playgroup: for mums and children under 5 of refugee and migrant backgrounds. Fridays during the school term 9am–12pm at the North Avon Community Centre. \$2 for the session, \$10 per term. Please bring your own morning tea for your child. NO shared morning tea. Face masks to be worn inside.

Music and stories at 10.30am.

Filipino Playgroup: Every Wednesday 9:30am–12:30pm (Except Public & School holidays)

Ladies Craft Group: currently closed. Please check our website or Facebook for updates. For more info call Preethi at **0223258060** or email preethi@deltatrust.org.nz

SHIRLEY COMMUNITY TRUST,

Ph: **(03) 981 5521, 77c Briggs Rod.**

MacFarlane Park Neighbourhood Centre: 17 Acheson Ave

Park Centre: 19 Acheson Ave.

Community Hub: Mon & Wed at Neighbourhood Centre. 10am – 2pm during term time. \$1 barista coffee & hot drinks.

The Listening Post: Mondays at MacFarlane Community Garden (off Jebson St.) 2:30pm – 4pm.

After School Gardening Club: Tuesdays during term time, for primary school-aged tamariki. 3:15pm – 4pm. At Macfarlane Park Community Garden (off Jebson St).

MacFarlanes on the Park

Café: Friday mornings, 9:30am – 12pm during term time.

Friday Night Fun: Last Friday of every month at the Park Centre. 7pm – 9pm. Fun games, good food & great company! \$2/person, \$5/family.

SHIRLEY LIBRARY,

36 Marshland Road (by the Palms Mall).
Phone (03) 941-7923

Monday

Shirley Library Book Discussion Group: 10:30am. Held on the 2nd Monday of the month. Bookings essential. Please phone or email to enquire about availability and cost.

Tuesday

J.P. Clinic: 10 a.m.–1 p.m. Weekly. No charge.

Wā Kōrero: Storytimes: 10:30 a.m.–11:00 a.m. Recommended for over 2s.

Wednesday

Scrabble Club: 1:30 p.m. to 3:30 p.m. No obligation, just come along and join our friendly group. All materials are supplied. Free.

Thursday

Manga Club: 3rd Thursday of the month. 3:00pm. Enjoy all things manga? Come share your favourites, find a new one, or just have a chat! Free, no bookings required.

Babytimes/Wā Pepi: for under two-year olds. 10:30–11 a.m. Weekly during term time. Free.

Friday

Card Club: Just come along and join the fun. Free. No bookings required.

Saturday

Family History Help: 1st & 3rd Saturday of the month. 10a.m. A member of the NZ Society of Genealogists will be available to help with your family history questions. Free.

Mahjong Group: 1:00 p.m. For beginners and advanced players alike. If you have your own set, please bring it along, otherwise come along and join in a friendly game.