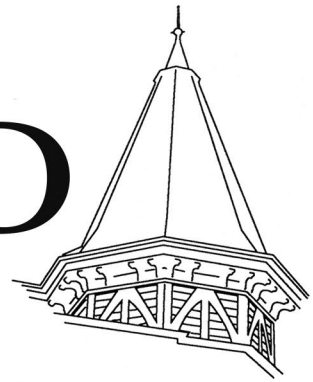


RICHMOND

COMMUNITY NEWS



Avebury House: 9 Eveleyn Couzins Avenue

Phone: 381-6615

Email: rcn@aveburyhouse.co.nz

Vol. No 24 No. 4

June 2026

Issue 208

Red Zone Housing Community Forum

Thurs 4 June, 7-9pm, The Junction Room at The Richmond Club

There's been a lot of discussion recently about potential 'edge housing' in the Ōtākaro Avon Red Zone, including early stage Council work exploring 68-90 potential homes along parts of Dallington. For many this brings uncertainty, concern and important questions about the future of this land and our communities.

The Avon Ōtākaro Network is hosting an open community forum to bring people together so you can hear from those involved, share facts and perspectives, explore possibilities, and workshop community views that can be fed into Council decision-making.

The bar will be open and refreshments available for purchase. Please note this is a space for respectful discussion, listening, and ensuring community voices are heard.



We'd love to hear from you!
Scan the QR Code to submit your questions and concerns ahead of the workshop.

Matariki in the Zone - Saturday 11 July, 2.30-6.30pm



Our favourite event! This year we will be celebrating **Matariki in the Zone on Saturday 11 July from 2.30-6.30pm**, centred in Richmond Community Garden on Vogel St and River Road.

Come and see us for the cosiest of gatherings! This winter warmer begins with the fun of community stalls, performances and activities in the daylight hours; then the transition to night-time comes with the lifting of the hāngī, the smooth sounds of Lisa Tui's band, and the smokin' skills of fire-spinner Sophie Changran.

Our star trail will be up in the week prior as always and we invite you to stroll through in the evenings and check out the installations. A huge thank you to University of Canterbury intern Maxine, who has been working with Avebury House on the pathway and tree lighting. We will have two guided star trail walks with dates to be confirmed, so keep an eye on the event page!

Brought to you by community partners Avon Ōtākaro Network, Richmond Community Garden, Avebury House and We Are Richmond, our hāngī is laid down by the generous team from Tuahiwi Marae, and on the day many more organisations will join us to make this event one of the highlights of our calendar. We look forward to seeing you there!



Richmond Community News is brought to you by Avebury House Community Trust and the following people:

Editorial: Tanya Didham.
Layout: Kristine Spoor.

Many thanks to our volunteers who deliver the RCN to 2800 households and businesses throughout Richmond.

The RCN is now available online:
www.aveburyhouse.co.nz/newsletter.html

Contact us at: rcn@aveburyhouse.co.nz or ring Avebury House: **03 381 6615**.

Disclaimer: Views and opinions expressed in the Richmond Community News are not necessarily those of the editor or Avebury House Community Trust. No responsibility is accepted for incorrect information contained in advertisements or editorials. Advertisements for publication are accepted in good faith and publication of an advertisement does not imply endorsement by Avebury House Community Trust.



The Wit of Sam

Why did the gargoyle quit his job guarding the castle? He was tired of being taken for granite.



I went to the video store and asked if I could borrow Batman Forever. They said, no, I have to bring it back tomorrow.



I am at the age where I appreciate a good handrail.

Illustration by Stephane Terris

Tuition

Reading, Writing, Spelling, Maths (Y1-Y12)
Qualified local teacher, individual programmes, great results.

P: 021 197 8383 or

E: katharineabeaumont@gmail.com

Piano, clarinet + saxophone, guitar + bass, music theory: Tuition at your tempo! Music lessons for all ages and stages with In Tune Music Studios NZ (027 606 4023 or nicola.intune@gmail.com).

RCN DELIVERERS NEEDED!

Once a month some amazing local volunteers deliver the Richmond Community News to your door. We have a couple of folks who are no longer able to help out, so if you live near Avebury House or Stanmore Rd and wouldn't mind a monthly neighbourhood walk to deliver newsletters, we'd love to hear from you! Huge thanks to all our deliverers, we couldn't get the news out without your generous support!



Affordable First Aid Courses in Richmond!

Avebury House is partnering with First Aid New Zealand to deliver affordable first aid classes in our community. If we have a maximum of 12 participants, the cost is just \$40 per person for a full half day of basic first aid training, a cup of tea, and a few laughs along the way.

If you have a group who are interested or would like to join a session as an individual, please contact Avebury House on admin@aveburyhouse.co.nz



Please note, these sessions run during work hours, usually from 9am to 1pm.

SAY 'NO' TO GRAFFITI

Have you been tagged?

It's easy to report and remove graffiti at your place.

We encourage the community to take responsibility for their own properties. Whether you're a business, a property or home owner, the CCC is here to help.

Quick removal is the best way to prevent tagging.

The CCC's Graffiti Program can provide free paint (in a limited selection of colours), graffiti removal wipes & resources. They can also work with you to create a mural to deter from further graffiti or help you find assistance if you are unable to remove the graffiti yourself.

If there's graffiti outside your property in a public place, report it to the CCC - use the Snap Send Solve app or call on **941 8999**. Snap Send Solve is free and can be downloaded from the Apple store or Google Play.



Stuck in a guitar rut? Call Matt.
Chords-Scales-Songs-Theory-Fun

0220991435

matdeacon@yahoo.com

Pretty in Pink!

Pink Ribbon Breakfasts are raising money for the Breast Cancer Foundation so the teams at Riverlution Parkrun & Cafe are joining in on Saturday 6 June!

Supporting a cause close to the hearts of our kaimahi (staff), Riverlution Market will be hosting a dedicated charity stall at the market on Saturday 6th June in support of Breast Cancer Foundation NZ with 100% of proceeds going directly to Breast Cancer Foundation NZ.

Alongside breast-shaped cupcakes lovingly made by staff and volunteers, we'll have handmade earrings, crafts, cards and a raffle too!



Adding to the pink spirit of the morning, Riverlution Parkrun will also be showing their support by dressing in pink. Please come along and support this great cause, and help us raise awareness and funds on 6th June.



RIVERLUTION & RICHMOND COMMUNITY GARDEN: JUNE 2026



Notable dates:

- Thurs, 4 June: Community Composting Crew, 10am-12pm
- Sat, 6 June: Pink Ribbon Morning Breast Cancer Awareness morning
- Sun, 7 June: Monthly Fungi Whānau at Fungi Farm, 10:30am-12pm

- Sat, 13 June: Riverlution Parkrun 1st Birthday
- Tues, 16 June: Repair Revolution 5.30pm-7.30pm
- Sat, 20 June: Saturday Volunteer Gardening Session 10am-1pm

Regular events:

- Volunteer Garden Sessions: Mondays & Wednesdays, 10am -1pm
- Crafternoons: Tuesdays, 12pm-2pm
- Riverlution Parkrun: Saturdays, 8am
- Riverlution Farmers' Market: Saturdays, 9am-12:30pm



Allan the Appliance Guy will collect *for free* scrap metal, old appliances, computers, dvd players etc. No printers pls. Call him on 027 756 2718.

Puzzle Answers:

Sound like animals: hair, guerrilla, hoarse, mouse
 Beginnings of NZ city names: Chris, Dun, Rotor, Welling
 Cross _____: beam, eyed, country, word
 Light brown: beige, caramel, fawn, sepia



It's Olive Season!

And you know what that means... Each year at this time, our community comes together to harvest, press, and share locally grown olives; turning back yard abundance into beautiful community-made olive oil. Whether you grow olives or not, you can still join us for our volunteer picks - especially if you feel comfy on a ladder!

From **Saturday 6 June to Monday 15 June**, our volunteer picking teams will be out harvesting olives across Ōtautahi and beyond. All collected olives will be delivered for pressing on Monday June 15th - timing is important to ensure the freshest oil.

It's a small window, and we have limited hands, so if you're keen to join us we'd love to have you. And if you have your own olives, and are able to harvest and drop them off to us, we will happily add them to the shared community press.

This is a cooperative harvest model — we pick together, press together, and share the yield. It's a practical and joyful way to reduce waste, celebrate local food, and strengthen community resilience.

Olives can be dropped to:

Riverlution Eco Hub, 46A Vogel St, Monday-Friday, 9am to 4pm

The Eco Hub is closed at weekends but there will be instructions to leave them by our garage door. Importantly, we will need your contact information and the weight of your olives.

Please email oliveoil@richmondcommunitygarden.co.nz if you have any questions or want to join in!



Join your local committee!



We Are Richmond would like to say a huge thank you to our Secretary, Liesbeth van Bruchem, who is stepping down from the role. Working with our community is so rewarding, and Liesbeth is a brilliant volunteer who will still be involved, just moving off the executive. Thank you Liesbeth! Now we are officially looking for

more committee members, including to fill the role of Secretary, so if you feel like working with some great folks who are making Richmond a more connected place, please get in touch!

Our next committee meeting is **Tuesday 23 June, 7-9pm at Avebury House**. Whether you want to join us, have a project to suggest, or just want to pop in and say hi - everyone is welcome! Any questions, email Rachel on rachel@wearerichmond.co.nz

www.facebook.com/evenns/1554186092265769/1554186132265765

We Are Richmond at the Farmers' Market!

Yes, you can now find We Are Richmond at the Riverlution Farmers' Market in Richmond Community Garden - we'll be there once a month - keep an eye out for our green flag!



Our next visit is Saturday June 20th, but check our facebook page for definite future dates. Usually we'll be there on the 3rd Saturday of the month between 9am-12:30pm. Rachel will be on hand to chat about anything and everything Richmond, plus what's happening in the wider community too.

If you have questions about the community, are curious about what's happening locally or what volunteer opportunities are available, We Are Richmond is here to help.

For any queries, contact Rachel directly by email at rachel@wearerichmond.co.nz

Our next Petrie Park perk-up!

Sunday 14 June, 11am - 2pm

Bring your gardening gloves and the kids (or grandkids!), and come help us plant and tidy at Petrie Park. In the spirit of meeting and working with our neighbours, this community project welcomes all-comers with hot soup, fun dog murals, and friendly faces - we'd love to see you!

Petrie Park is at 119 Petrie St in Richmond.

www.facebook.com/events/1471502654311559/



Matariki Weaving Session with The White Room - Sat 13 June



Join The White Room and We Are Richmond for a fun, free, outdoor Matariki weaving session at the Pop-Up Gallery in Richmond Community Garden.

The White Room team will be making decorations for our Ururangi tree, part of the star trail at Matariki in the Zone. We enjoy decorating this tree every year and welcome you to come make some cool decorations with us!

The White Room Pop-Up Gallery is in the big yellow shed, next to Riverlution Cafe, in Richmond Community Garden. Join us from 10am to 12pm on Saturday 13 June.

www.facebook.com/events/1486210589656091

What is WanderSearch?

What is WanderSearch?

WanderSearch Canterbury safeguards vulnerable individuals at risk of going missing. We work with all ages and conditions such as Dementia, Autism, intellectual disabilities and brain injury, and supply **free** radio frequency devices that allow wearers to be found quickly



by NZ Police. Time is of the essence when frail or vulnerable people go missing - being able to locate someone quickly with a WanderSearch device can be life-saving.

We believe income should not be a barrier to receiving this vital support, so our Device Loan Bank is funded through philanthropic organisations and delivery is through dedicated WanderSearch volunteers.

There are many advantages in choosing one of our radio frequency devices but here are a few key points for those considering a device:

1. They do not use the cellular network, so they operate in any place in New Zealand.
2. The devices do not require charging.
3. They have no moving parts and cannot be turned off by the user. There are no external buttons or lights on the device.
4. The battery is sealed within the device. It lasts for 6 months. After this time the old device is removed for refurbishment and a new device issued.

5. The person at risk will keep the device with them whenever they go out. Devices can be fitted comfortably or utilised in way that suits the individual.

6. The devices are shower proof so can be worn continuously.

7. The system does not monitor devices. The only time a person will

be searched for using WanderSearch search equipment is when the police are notified that they have gone missing.

Gene Ruiz, Clinical Manager at WindsorCare discusses how a WanderSearch device supports their residents.

"WanderSearch has given us tremendous peace of mind," Gene says. "It allows residents to maintain their independence and continue enjoying their walks safely, while giving our team confidence that help will be on the way whenever needed."

A Rescue at the Riverbank - Gene shared a recent occasion where a resident did not return after an afternoon walk. *"Thanks to the tracker's radio frequency, the Police were able to locate him promptly. He had experienced a fall near the riverbank, and with dusk approaching and rain on the way, the outcome could have been very different without the device."*

If you care for someone who may be at risk of going missing please call **03 9070072** or email emma@wandersearch.nz



COMPLIMENTARY HOUSE CLEAN

List and sell your property with Charlotte and receive a complimentary professional clean of your home prior to settlement, saving you a task and ensuring your move goes as smoothly as possible.

Get in touch now for an obligation free appraisal of your property.

"I cannot recommend Charlotte enough, from the moment we signed up to settlement of our property, she continually communicated with us. Her knowledge and understanding of the process was exceptional and made us feel at ease." - L Slater



Charlotte Heaslip | 027 386 0667 | charlotte.heaslip@bayleys.co.nz

WHALAN AND PARTNERS LTD, BAYLEYS, LICENSED UNDER THE REA ACT 2008

PROUD TO BE A RICHMOND LOCAL



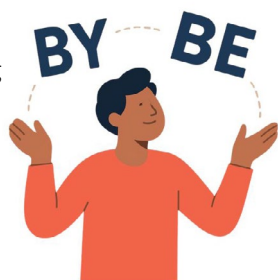
ALTOGETHER BETTER

Residential / Commercial / Rural / Property Services

Mind Yer Language: Those Be-words...

By Tanya Didham

Our ubiquitous be- prefix comes from an altered pronunciation of 'by', meaning near or around. In some words where the prefix is stressed, we kept the 'by' sound, for example in 'bygones' and 'bystander', but when the emphasis moves away from that first syllable, the *by-* becomes a *be-*. For example in 'becomes'! It's just easier than saying 'bycomes'.



Once you start thinking of be-words, it's hard to stop. There was quite the fad for them in the 16th and 17th centuries, and many of them were too fun not to keep, like besmirch, befuddle, betwixt and bedraggle. (The now defunct 'draggel', meant to literally drag something through the mud!). One can still be bespattered, bewildered, besotted, bedazzled, bejewelled, bespectacled and betrothed (united 'by a troth', or pledge; from the same root as 'truth'). But many of these snazzy words did die out, preserved only in old literature where we farewelled the likes of bethwack, beshrew, befool and betongue (meaning to scold, easy tiger!).

However some of these be-words sank so deeply into the lexicon, we don't associate them with their quaint archaic cousins. Begin, before, below, beside, because... These are integral to everyday speech, and, if you think about it, it's not hard to find the 'by' origin with these words. So what about behave? Yes it is the 'by' prefix, and it is the 'have' we're familiar with too. The be- is very, shall we say, versatile; so while it stems from the 'near, around' meaning, during its heyday as a new word-former, it could also mean causing, providing, even removing (think behead!), or just act as a straight up intensifier, as it does here. 'Have' is in the sense of possession; so to 'behave' was to imply complete possession of oneself. The art of social restraint - oh do behave!

"Some of my best leading men have been dogs and horses."

-Elizabeth Taylor

Help shape the future of public transport – give feedback now!

Our transport system is under pressure and improving public transport is one of the most effective ways to reduce congestion, support growth, and keep people moving.



Canterbury Regional Council (Environment Canterbury) is reviewing its Metro bus and ferry services and wants to hear from everyone, whether you catch the bus often, sometimes or never. Environment Canterbury's Manager Public Transport Strategy and Planning Sonia Pollard said the review was an honest conversation about difficult choices. "We need input from all members of the community, even those who prefer to drive. There is a desire across the community for service improvements, but funding is limited. Feedback will help prioritise needs alongside technical data like passenger trends and growth projections," Pollard said.

Preferred options will be presented through the regional council's draft Long-Term Plan 2027–37, giving residents a further opportunity to share their views before final decisions are made. Please note this review does not include trains, light rail, fares, or services outside the current network area.

Visit ecan.govt.nz/metroreview to have your say before 24 June 2026.

Winter Solstice Bike Ride – Sunday 21 June



Our shortest day will be marked by the Winter Solstice Bike Ride in Hagley Park for the 15th year in a row! Organised by Spokes Canterbury to promote safe cycling, this event goes ahead, whatever the weather - and what a fun way to start

the longest night! Bling out your bike, your helmet and your person with as many lights as you can.

Meet inside the Park at the Armagh Street Mickle Gates from 5pm for a 5.30pm start. Riders will follow each other single file around the paths of North Hagley park. This is a family-friendly event but organisers urge that you ride with your children as it is pretty dark by 5.30pm.

Walking the Talk in Dallington!

Kia ora Richmond!

Despite the winter chill setting in, there's certainly no shortage of things to do across Richmond and surrounding communities. I recently attended the Avon Park Whānau Fun Day—what a fantastic turnout. It was wonderful to see so many families making the most of this new recreational space and enjoying time together.

Our next Walk the Talk kicks off nearby at Dallington Landing on Saturday 4 July, exploring the middle section of the City to Sea Pathway along the Avon Ōtākaro awa. Starting at Dallington Landing, we'll cross Snell's Bridge to Avon Park and Kerrs Reach, taking in picnic spots, playgrounds, and the vibrant river corridor used for rowing and other water activities.

As many of you know, this area was once home to many families and communities. And today it reflects the resilience and renewal that has followed the earthquakes. We'll hear from guest speakers sharing stories of what was here before, the vision behind the area's redesign, and the ongoing regeneration shaping this part of Christchurch East.

With Matariki approaching, it's a meaningful time to reflect, reconnect, and look ahead. One great way to mark the occasion locally is Matariki in the Zone on Saturday 11 July- so wrap up warm and come along for

kai, activities, music, and community connection.

With the winter sports season now underway, I know this can be an added strain for families. If your tamariki need support to participate- or you're already thinking ahead to the summer season- there is help available. There are organisations that can assist with fees, uniforms, and equipment. Feel free to get in touch with my office at chcheast@parliament.govt.nz, and my team will share this information with you.

More broadly, if you need help navigating government agencies, or have any ideas, questions, or concerns, my office is open five days a week. My team and I are always here to help--so please don't hesitate to get in touch.

Ngā mihi
 Reuben Davidson | MP for Christchurch East
chcheast@parliament.govt.nz | 03 382 0288 | 0800 MP EAST (67 3278)
 Funded by Parliamentary Service



Puzzle



Sort the list of 16 words into 4 groups of 4. The words in each group have something in common. That something could be any aspect of the words, such as their meaning, spelling or how we use them. Answers are on p3.

Group 1

Group 2

caramel	mousse
country	guerrilla
hoarse	word
hair	Chris
sepia	fawn
Welling	eyed
beige	beam
Dun	Rotor

Group 3

Group 4



Copiers ■ Printers ■ Document Solutions ■ IT
 Kyocera ■ Samsung ■ Fuji Xerox
 03 366 2217
www.kmbe.co.nz



What's on in Richmond



AVEBURY HOUSE,
9 Eveleyn Couzins Avenue.
Phone (03) 381-6615
The office is open Mon to Fri
from 9 am to 1 pm.

Monday

Men's Shed: Contact Ian at 027 555 8368.

Gentle Exercise: 10:30–11:30 a.m.

A tutor will guide you through a routine designed to keep those muscles moving! \$5/session.

Pilates: 10:30am \$10/session. Bookings required, contact **0272515475**.

Yoga: 6pm. \$10/session.

Tuesday

Yoga: 9:00–10:00 a.m. Join us for a good stretch! Beginners welcome. \$10/session.

Tai Chi: 10:30 a.m. \$10/session

Small White Teapot Group: Haiku group meets every 4th Tuesday of the month at 12pm. Contact Barbara at **021 171 8622**.

Pilates: 5:30pm \$10/session. Bookings required, contact **0272515475**.

Wednesday

Pilates: 10:30am, 5:30pm & 6:30pm. \$10/session. Bookings required, contact **0272515475**.

Write Your Own History: Every 2nd and 4th Wed of the month. 10 a.m. –12 noon. Please email to confirm at

grahamandlois@xtra.co.nz.

Hugs All Round Quilting Group:

1–3 p.m. We make quilts for children who need an extra hug. Join us to learn more about quilting.

Thursday

Pilates: 10:30a.m. \$10/session.

Bookings required, contact **0272515475**.

Alexander Yoga: 6pm. Bookings required. Contact Teresa 02102671668.

Saturday

Yoga: 9am, \$10/session.

Pilates: 10am, \$10/session.

SHIRLEY LIBRARY,

36 Marshland Road (by the Palms Mall).
Phone (03) 941-7923

Tuesday

Wā Kōrero: Storytimes: 10.30–11am
Suitable for ages 2–5. Free.

Dungeon Delvers: 3:45pm - 5:15pm. 10-16 years old. Registration required.

Wednesday

Wā Kōrero-Storytimes - 10:30 - 11am.
Suitable for 2-5 years old.

Craft Collective: 11am-12pm. Come along to our Craft Collective sessions and have a go at something new. Free.

Scrabble Club: 1:30pm–3:30pm
All materials are supplied. Free, no bookings required.

Dungeon Delvers: 3:45pm - 5:15pm. 10-16 years old. Registration required.

Sensory Craft for Pēpi:

11–11.30am. Suitable for ages 0–2. Free.

Thursday

JP Clinic: 10am–1pm.

Wā Pepi: Babytimes

10.30–11am. Suitable for ages 0–2. Free.

Me Kōrero Tatou (Te Reo Language Group): 1.30–2.30pm. Suitable for all ages. Free.

No bookings required. All skill levels welcome.

Code Club @ Shirley: 3:45pm - 5:15pm.

9-11 years old. Registrations required.

Friday

Cards at Shirley: 1.00–3.30pm. Free. No bookings required.

Saturday

Family History Help: 10.00am–Midday

1st and 3rd Saturday of the month
Ran by the Canterbury Genealogy Society.
Free. No bookings required.

Saturday Storytimes: 10:30am-11:30am.

Mahjong Club: 1.00–3.30pm

Free. No bookings required.



DELTA COMMUNITY TRUST,
101 North Avon Road (Entrance
off Chrystal St)

Ph: (03) 389-0212, Free phone
0800233582.

www.deltatruster.org.nz

A Place for Community, Connection & Care: Delta is a welcoming community hub where individuals, whānau, and neighbours can come together for connection, support, and a sense of belonging.

Monday Café: Every Monday (except public holidays). 10am to noon. \$3 toasties, soup and brunch meals. Tea/coffee \$50 cents.

Thursday Kai Club: hot dinner \$10 from 5pm to 6.30pm. Kids under 12 eat free. Doors open 3.30pm every Thursday for coffee, cake, lunchbox fillers.

Friday Drop-Inn café: Every Friday except public holidays. 10am-12.30pm. Choice of 2 mains only \$5, Dessert \$3, tea & Coffee 50c. Lunch served at 12noon.

Free Budgeting Advice and Advocacy:
Please ring for an appointment.

North Avon Community Centre

Filipino Playgroup: Every Wednesday 9:30am-12:30pm (Except Public & School holidays) For more information contact Jo jo@odt.org.nz or **021-1151657**

SHIRLEY COMMUNITY TRUST & SHIRLEY VILLAGE PROJECT

www.shirleycommunitytrust.org.nz
03 981 5521

www.shirleyvillage.org **021 157 7846**

TTO = Term time only

Neighbourhood Centre: 17 Acheson Ave

English Café: Practice your English with others, Mondays 1-2.30pm, \$2.

TechMate: tech support, Mondays 11am-12pm.

Community Hub & Barista Training: Mon & Wed 10am - 2pm TTO

Fruit & Vege Co-op: Wednesdays 10am-2pm, \$15 bags.

Employment & Services Support: Weds, 11am - 1pm

Sewing Circle: Fortnightly Thursday 12-2pm. Shirley yellow bin weeks.

MacFarlanes on the Park Cafe: Fridays, 9:30 - 12pm, TTO

Walking Group: Friday 10am, TTO.

Park Centre: 19 Acheson Ave

Sparkling Stars: Mon, 9:30am, Music & movement for under 5s. \$3/family. TTO.

Nurse-led Foot Care Clinic: Approx monthly on Tuesday 9:45am.

Appointments essential.

Call 0226218269. \$15.

Knit & Knatter Group: Fortnightly Wed, 10am. Shirley yellow bin weeks.

All Age Community Kapa Haka:

Wednesday 5.30-6.30pm, TTO.

Groove & Move: Seated Exercise

Sessions. Fortnightly Wednesday, Shirley red bin weeks & weekly Thursday 10am. TTO.

MacFarlane Park Community Garden (off Jebson St)

Listening Post: Monday 2:30-4pm.

Afternoon tea. TTO.

Gardening: Thursday 1pm (Term 2 & 3).

Shirley League Club 33 Briggs Rd.

Shirley Tool Shed: Saturday 9-11am. \$30 annual membership.

RICHMOND COMMUNITY GARDEN

Riverlution EcoHub,
46A Vogel St



Garden Days: Monday
Wednesday & 3rd Saturday of
the month from 10am. to 1pm.
We welcome volunteers!

Riverlution Eco Hub: Mon-Fri,
9am-4pm.

Repair Revolution: Every
3rd Tuesday of the month at
5:30pm.

Crafternoons: Tuesdays, 12pm
Riverlution Market: Saturdays,
9am

Yoga: On hold until summer.
Sundays, 8am

EASTERN COMMUNITY SPORT & RECREATION,

Email: Kate@easterncommunity.co.nz

Ph: 027 728 3005

Catchball: 10:30am – 12:00pm Tuesdays
term time only. First time free, **contact@canterburycatchball.nz**

Free Football Dropin for Children: 3-4pm at
Avon Hub Tuesdays. Suitable for 8+ years.

Pickleball session: Tuesdays 9-10:30am \$7.
Use the book a class option at

www.pay2play.co.nz to save your spot.

Pickleball session Sunday mornings:
10-11:30am \$7

Dance Fitness: Tuesdays, 7pm, \$7/class

Eastern Chargers Junior Basketball League:
4:30-7pm, Fridays. For Years 5-8. Term time
only.